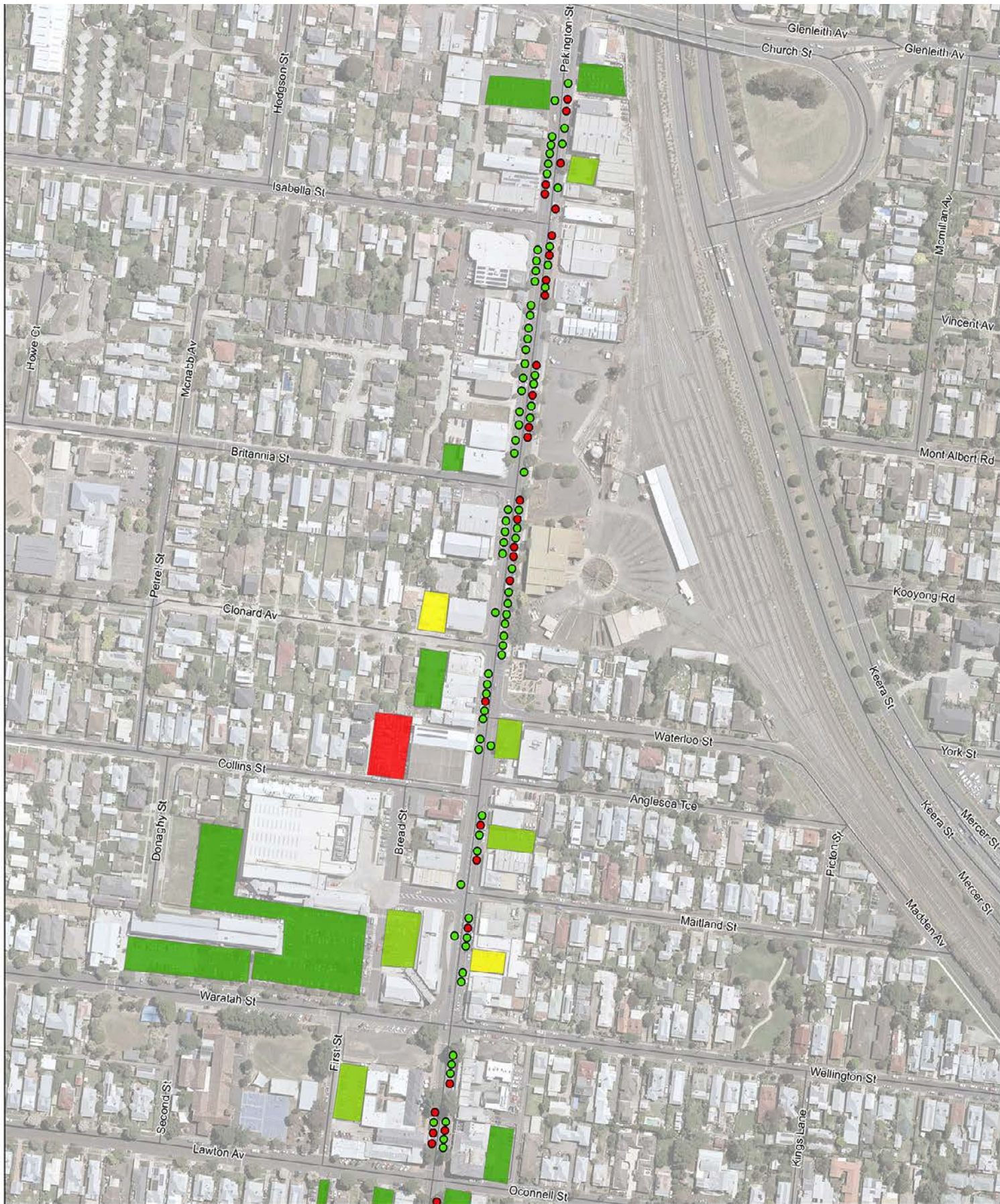
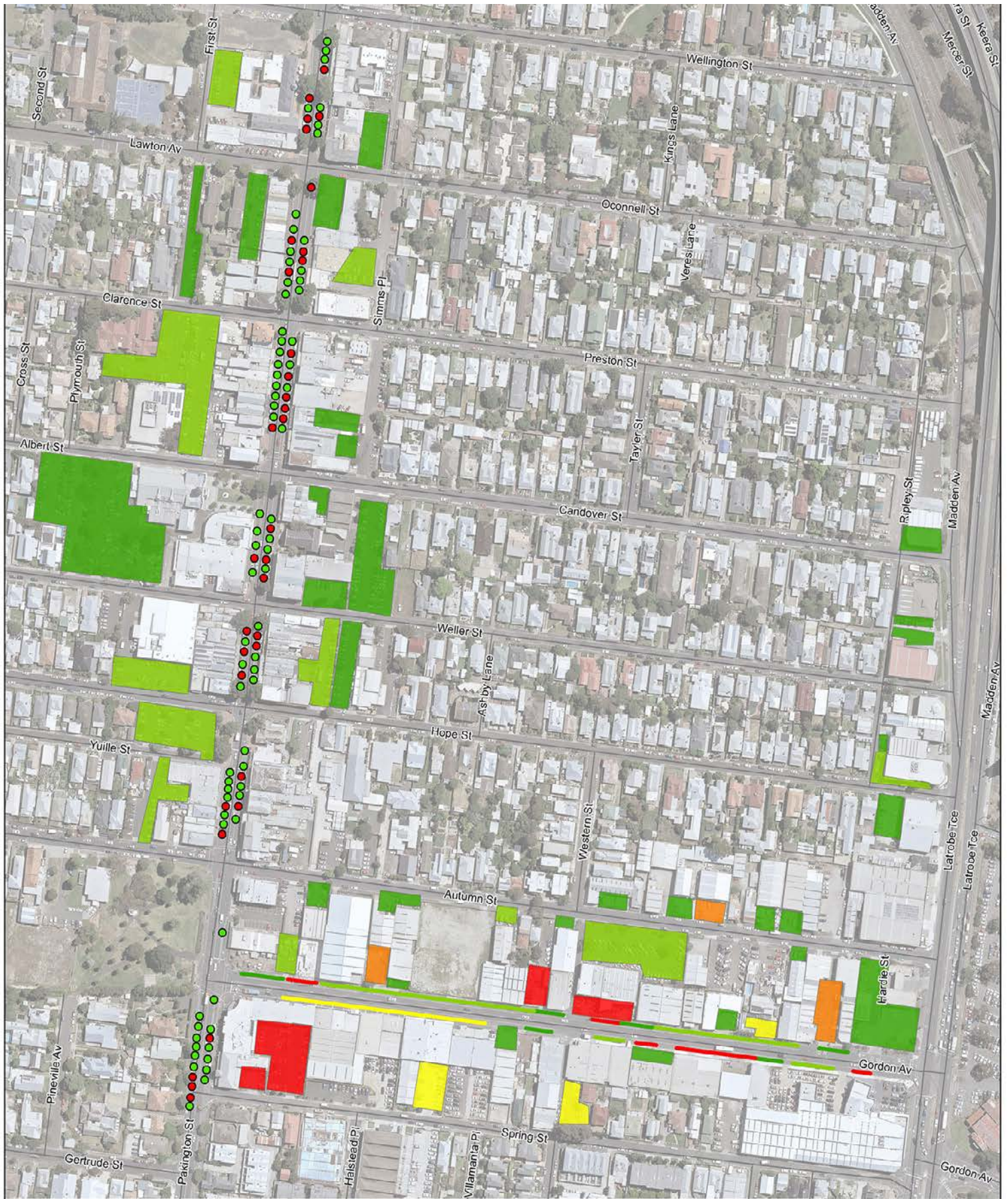


## **Appendix B – Parking Occupancy (Thursday)**





Paper Size A3  
 0 25 50 75  
 Metres  
 Map Projection: Transverse Mercator  
 Horizontal Datum: GDA 1994  
 Grid: GDA 1994 MGA Zone 55

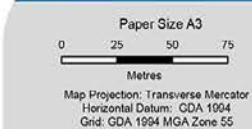


City of Greater Geelong  
 Pakington Street Parking and Traffic Study

Job Number 31-36000  
 Revision A  
 Date 17/05/2018

Parking Occupancy  
 Thursday 0800

Appendix B1

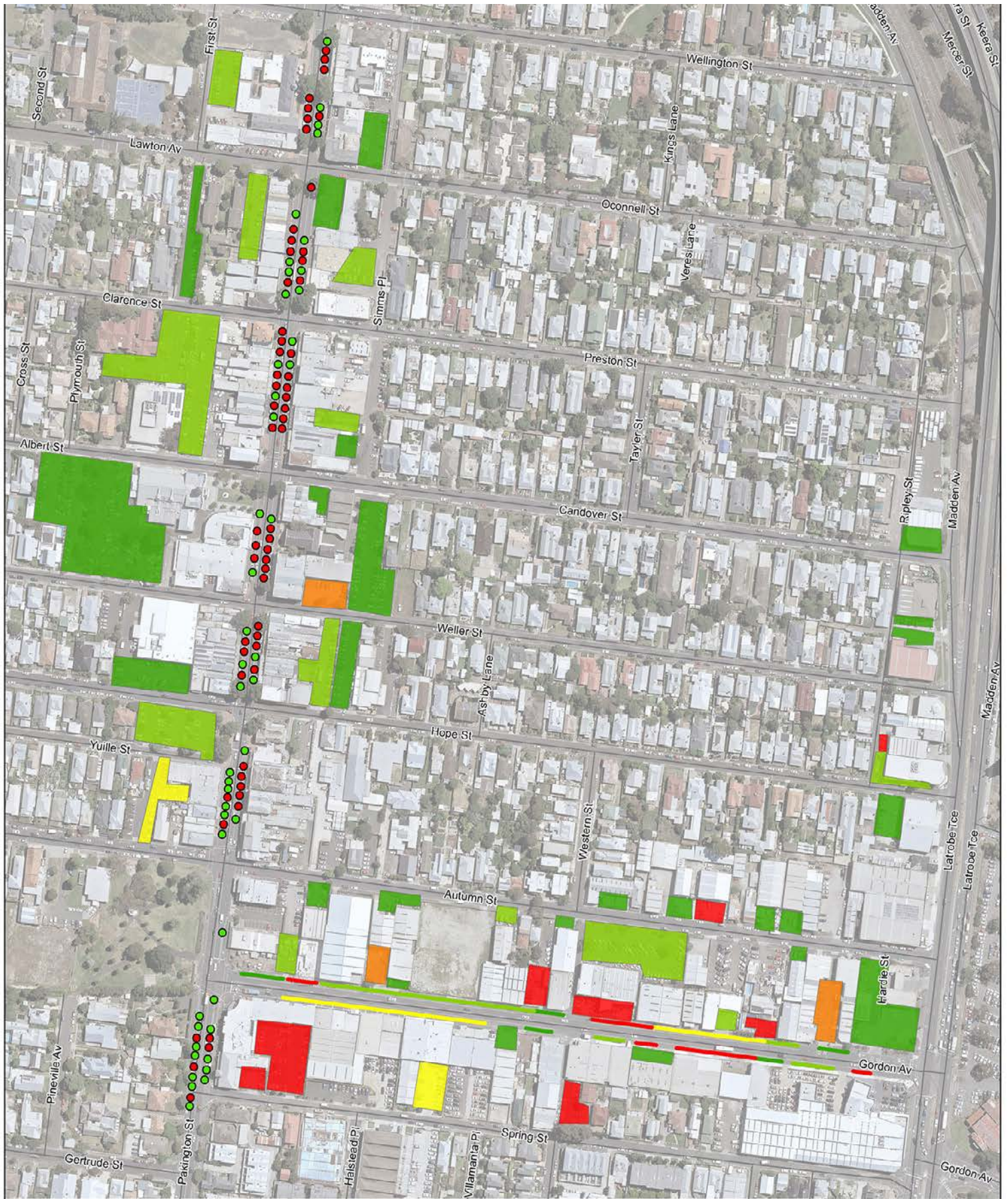


City of Greater Geelong  
Pakington Street Parking and Traffic Study

Job Number 31-36000  
Revision A  
Date 17/05/2018

Parking Occupancy  
Thursday 0830

Appendix B2



Paper Size A3  
 0 25 50 75  
 Metres  
 Map Projection: Transverse Mercator  
 Horizontal Datum: GDA 1994  
 Grid: GDA 1994 MGA Zone 55



City of Greater Geelong  
 Pakington Street Parking and Traffic Study

Job Number 31-36000  
 Revision A  
 Date 17/05/2018

Parking Occupancy  
 Thursday 0830

Appendix B2



Map Projection: Transverse Mercator  
Horizontal Datum: GDA 1994  
Grid: GDA 1994 MGA Zone 55

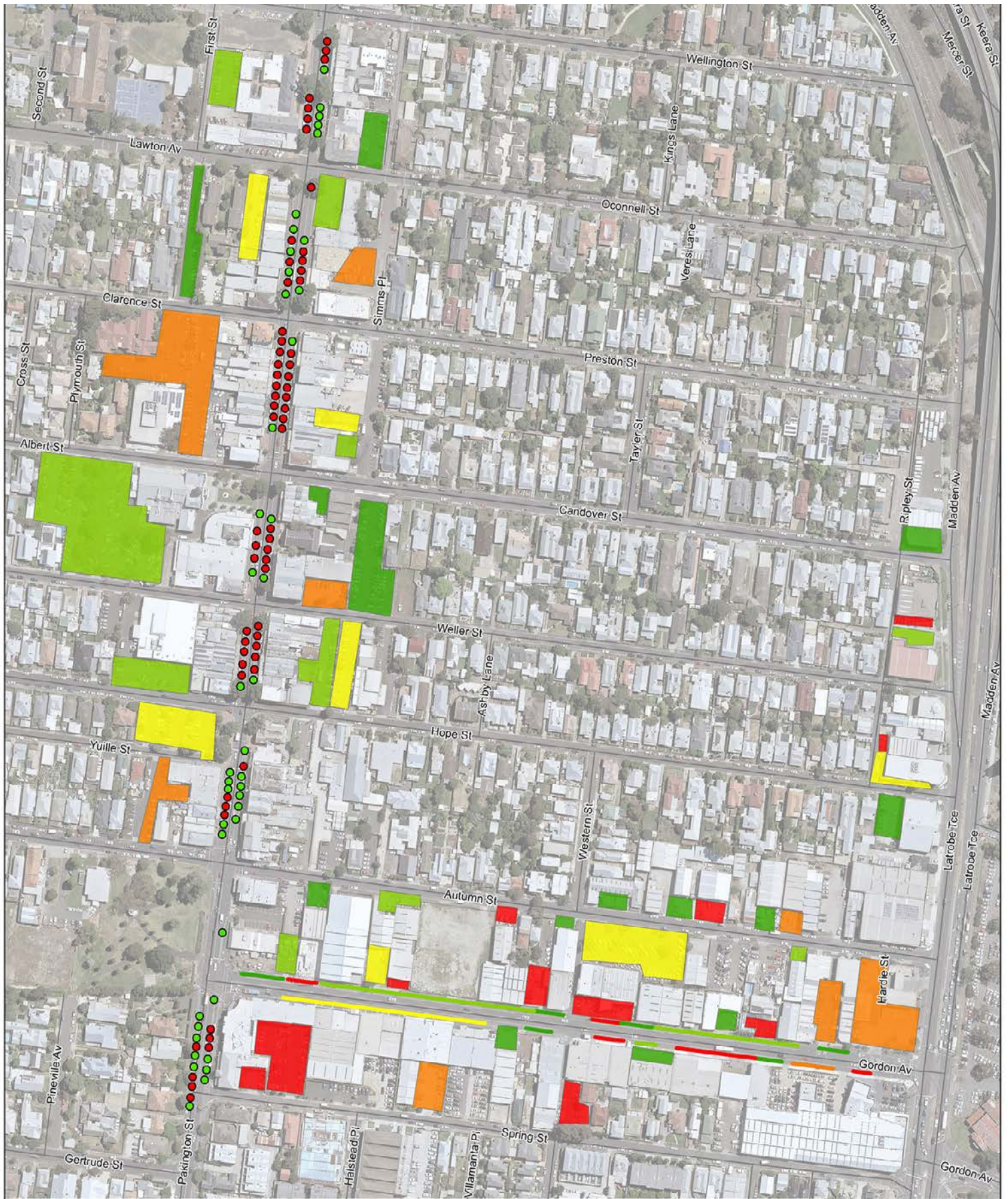


City of Greater Geelong  
Pakington Street Parking and Traffic Study

Job Number 31-36000  
Revision A  
Date 17/05/2018

Parking Occupancy  
Thursday 0900

Appendix B3



Map Projection: Transverse Mercator  
Horizontal Datum: GDA 1994  
Grid: GDA 1994 MGA Zone 55

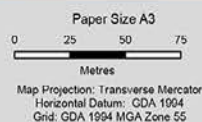


City of Greater Geelong  
Pakington Street Parking and Traffic Study

Job Number 31-36000  
Revision A  
Date 17/05/2018

Parking Occupancy  
Thursday 0900

Appendix B3

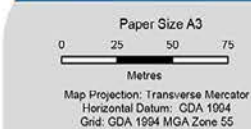
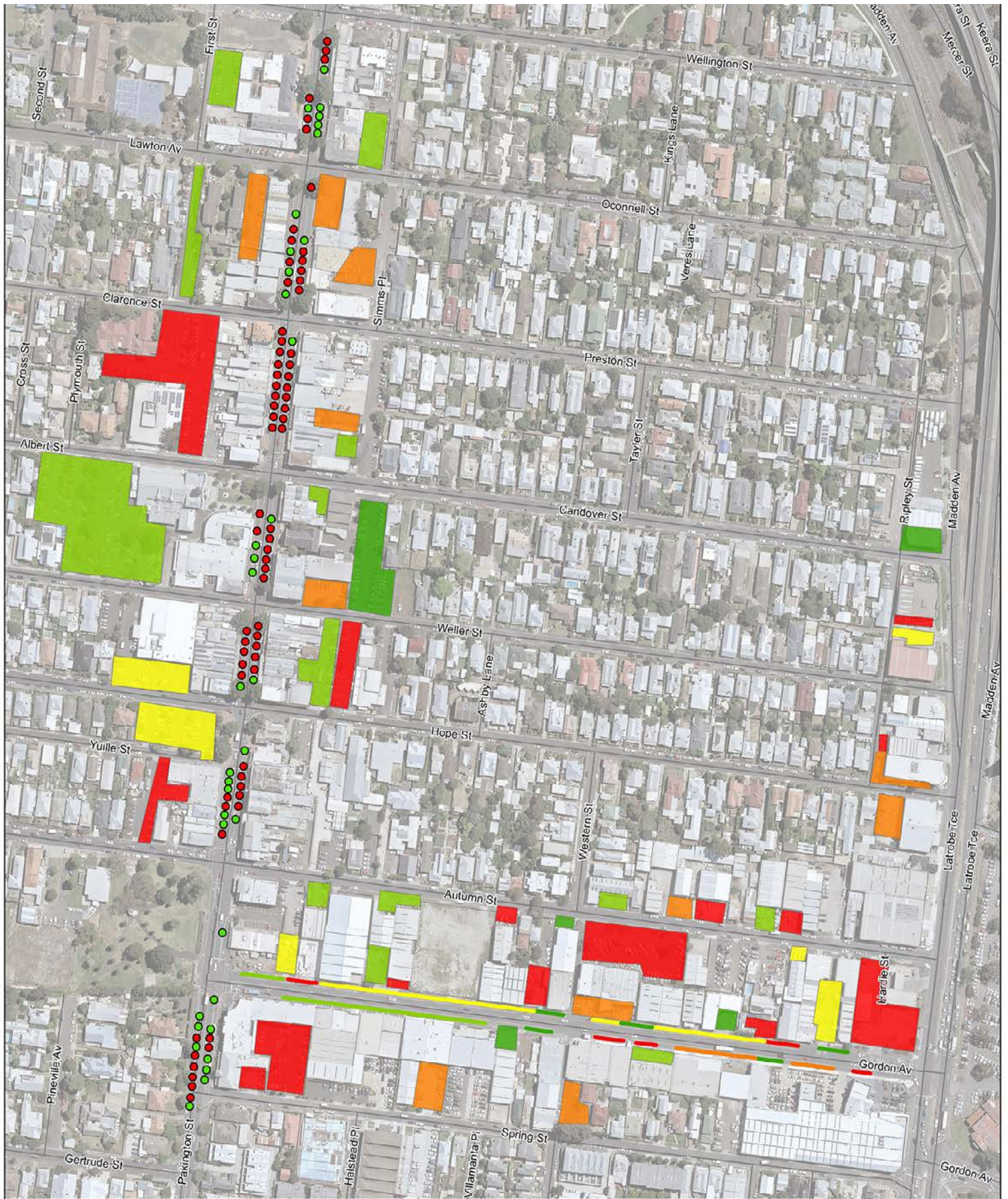


City of Greater Geelong  
Pakington Street Parking and Traffic Study

Job Number 31-36000  
Revision A  
Date 17/05/2018

Parking Occupancy  
Thursday 0930

Appendix B4



City of Greater Geelong  
Pakington Street Parking and Traffic Study

Job Number 31-36000  
Revision A  
Date 17/05/2018

Parking Occupancy  
Thursday 0930

Appendix B4

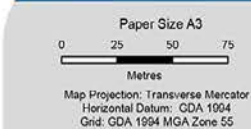
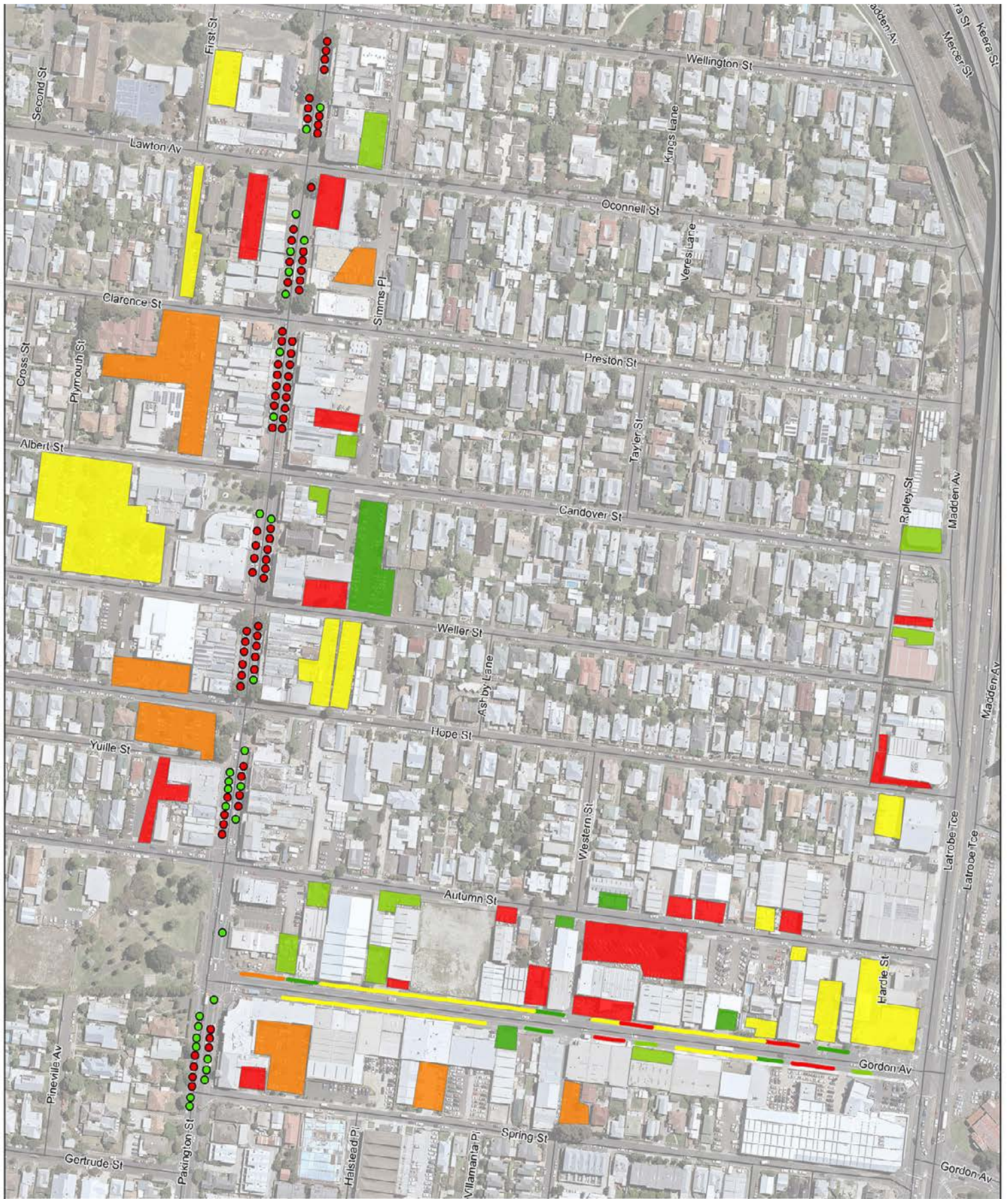


City of Greater Geelong  
Pakington Street Parking and Traffic Study

Job Number 31-36000  
Revision A  
Date 17/05/2018

Parking Occupancy  
Thursday 1000

Appendix B5

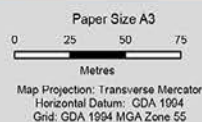


City of Greater Geelong  
Pakington Street Parking and Traffic Study

Job Number 31-36000  
Revision A  
Date 17/05/2018

Parking Occupancy  
Thursday 1000

Appendix B5

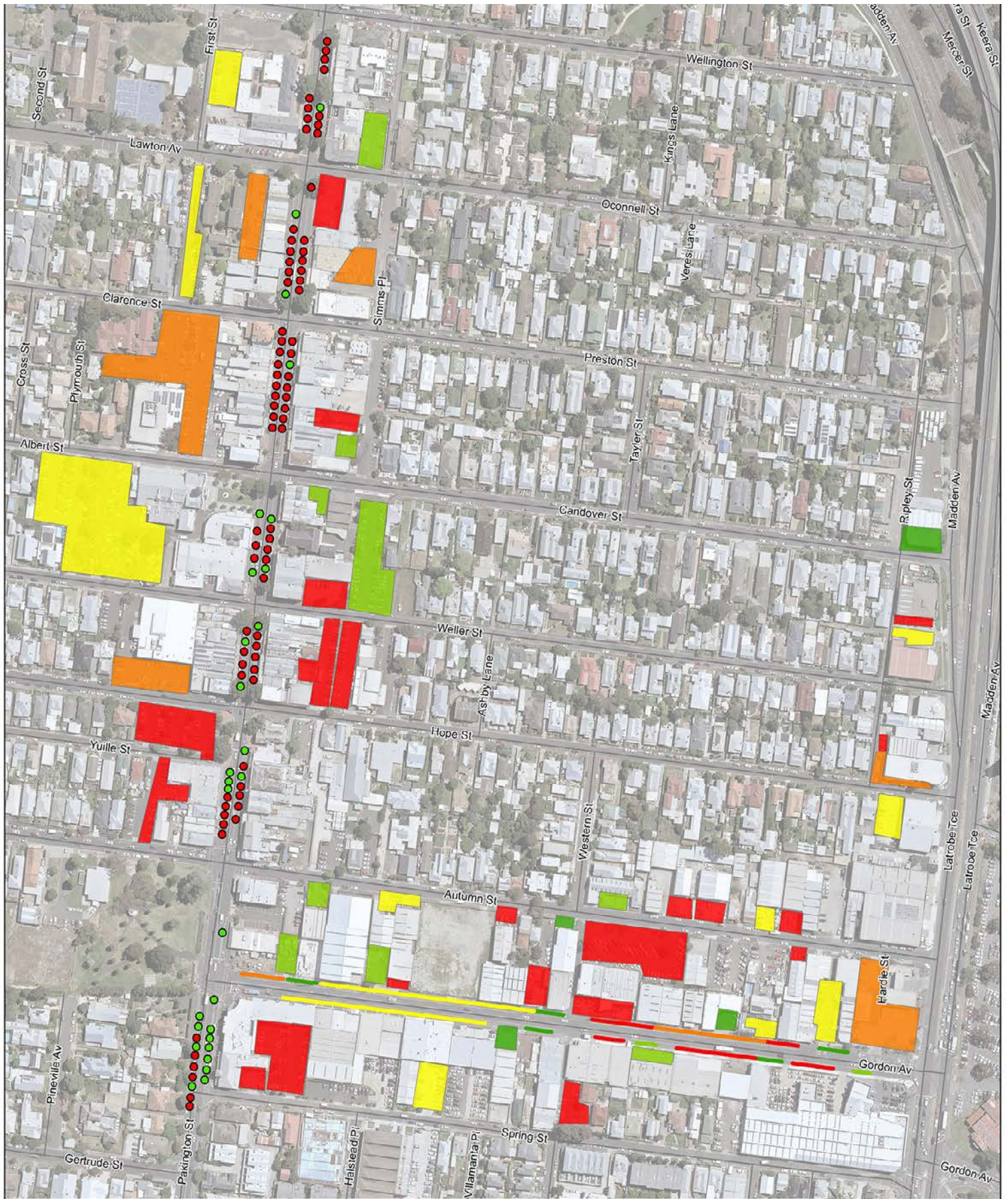


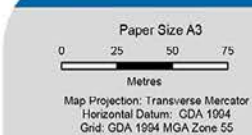
City of Greater Geelong  
Pakington Street Parking and Traffic Study

Job Number 31-36000  
Revision A  
Date 17/05/2018

Parking Occupancy  
Thursday 1030

Appendix B6



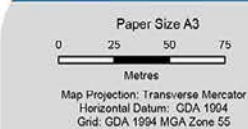
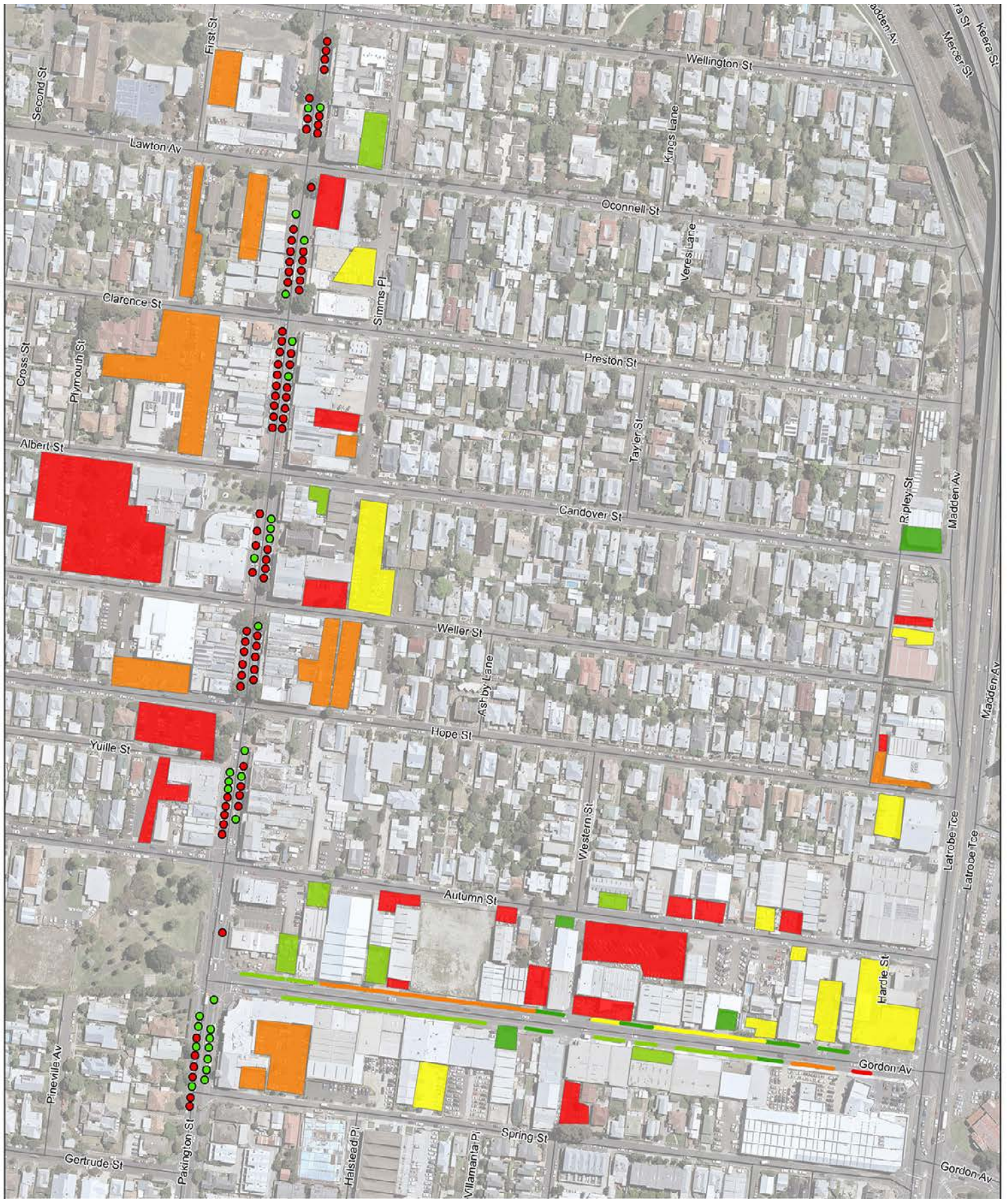


City of Greater Geelong  
Pakington Street Parking and Traffic Study

Job Number 31-36000  
Revision A  
Date 17/05/2018

### Parking Occupancy Thursday 1100

### Appendix B7



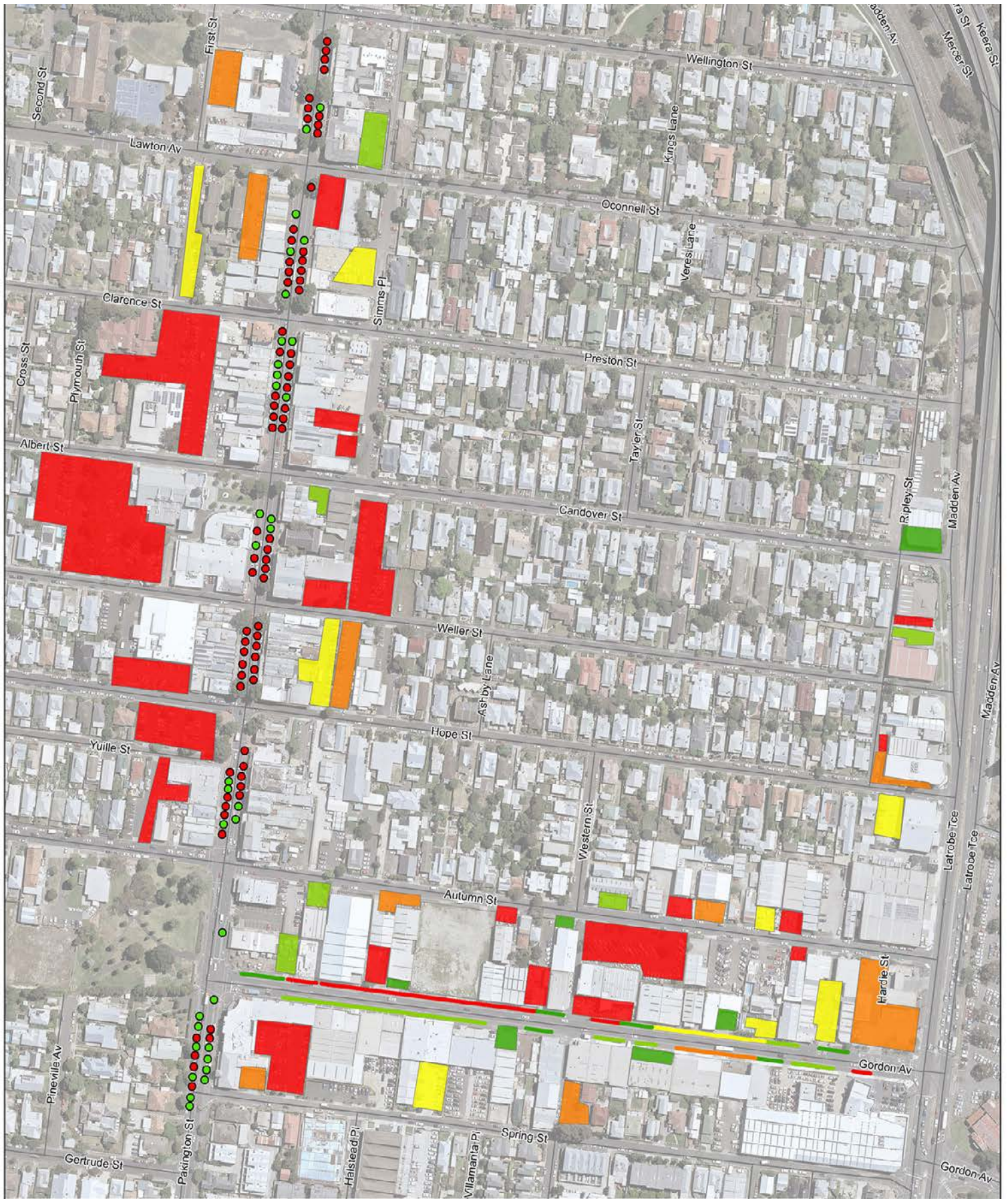
City of Greater Geelong  
Pakington Street Parking and Traffic Study

Job Number 31-36000  
Revision A  
Date 17/05/2018

### Parking Occupancy Thursday 1100

### Appendix B7





Map Projection: Transverse Mercator  
Horizontal Datum: GDA 1904  
Grid: GDA 1994 MGA Zone 55

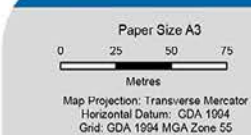


City of Greater Geelong  
Pakington Street Parking and Traffic Study

Job Number 31-36000  
Revision A  
Date 17/05/2018

Parking Occupancy  
Thursday 1130

Appendix B8

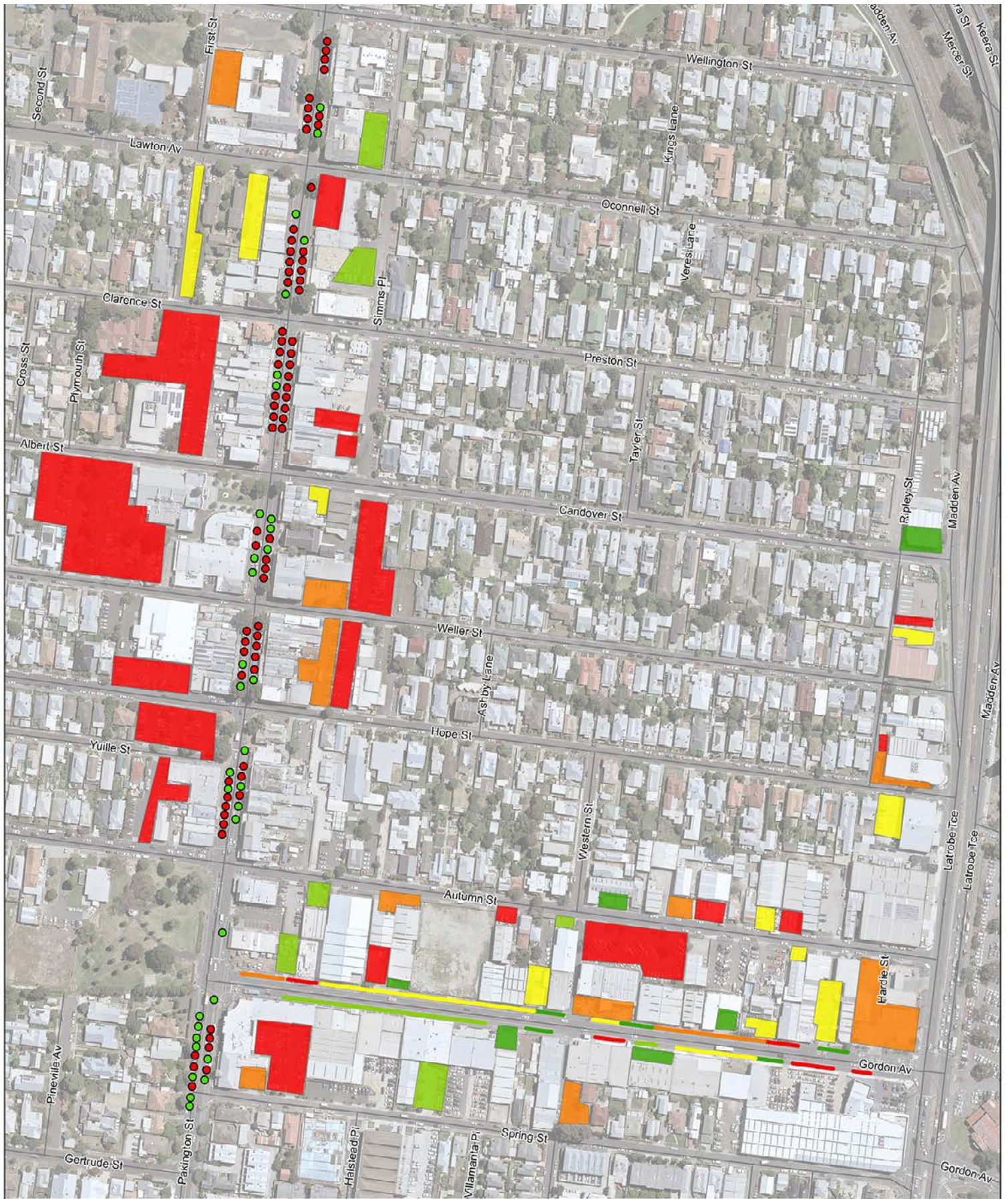


City of Greater Geelong  
Pakington Street Parking and Traffic Study

Job Number 31-36000  
Revision A  
Date 17/05/2018

Parking Occupancy  
Thursday 1200

Appendix B9



Map Projection: Transverse Mercator  
Horizontal Datum: GDA 1994  
Grid: GDA 1994 MGA Zone 55

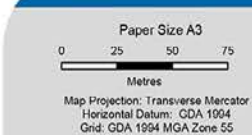


City of Greater Geelong  
Pakington Street Parking and Traffic Study

Job Number 31-36000  
Revision A  
Date 17/05/2018

Parking Occupancy  
Thursday 1200

Appendix B9

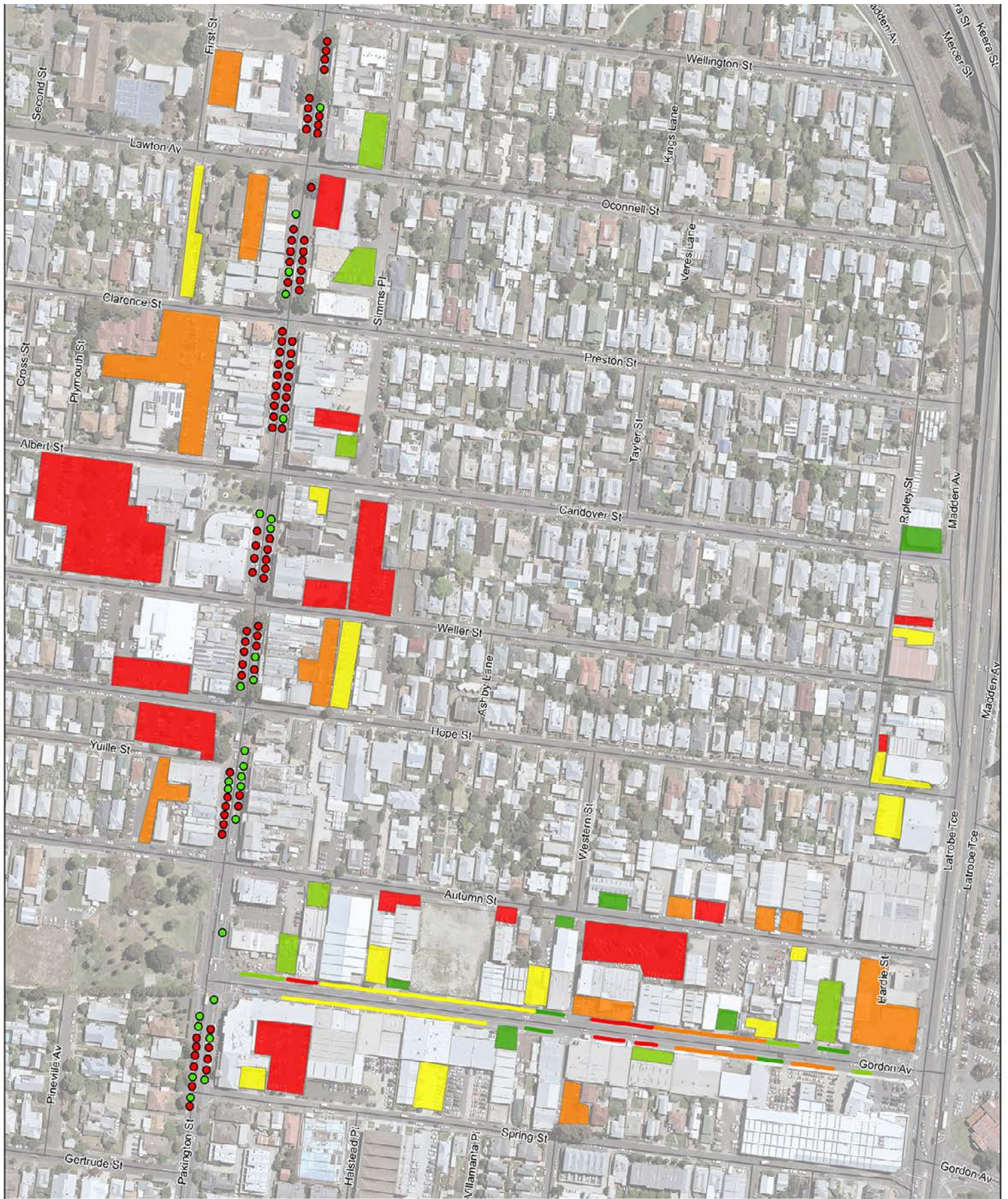


City of Greater Geelong  
Pakington Street Parking and Traffic Study

Job Number 31-36000  
Revision A  
Date 17/05/2018

Parking Occupancy  
Thursday 1230

Appendix B10



Map Projection: Transverse Mercator  
Horizontal Datum: GDA 1994  
Grid: GDA 1994 MGA Zone 55



City of Greater Geelong  
Pakington Street Parking and Traffic Study

Job Number 31-36000  
Revision A  
Date 17/05/2018

Parking Occupancy  
Thursday 1230

Appendix B10



Map Projection: Transverse Mercator  
Horizontal Datum: GDA 1994  
Grid: GDA 1994 MGA Zone 55

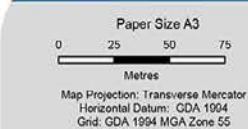
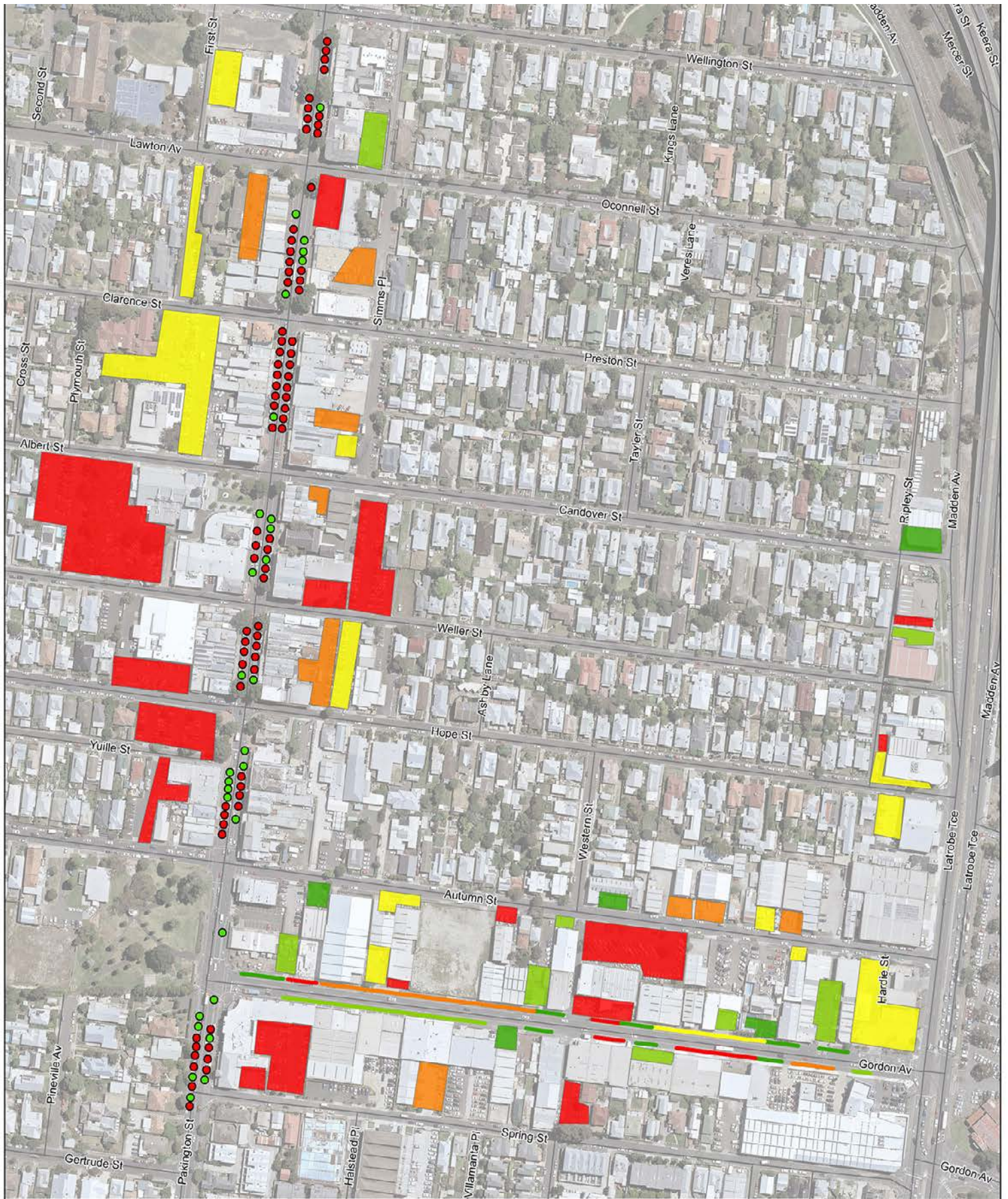


City of Greater Geelong  
Pakington Street Parking and Traffic Study

Job Number 31-36000  
Revision A  
Date 17/05/2018

Parking Occupancy  
Thursday 1300

Appendix B11

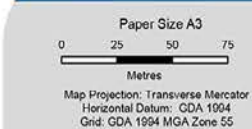


City of Greater Geelong  
Pakington Street Parking and Traffic Study

Job Number 31-36000  
Revision A  
Date 17/05/2018

Parking Occupancy  
Thursday 1300

Appendix B11

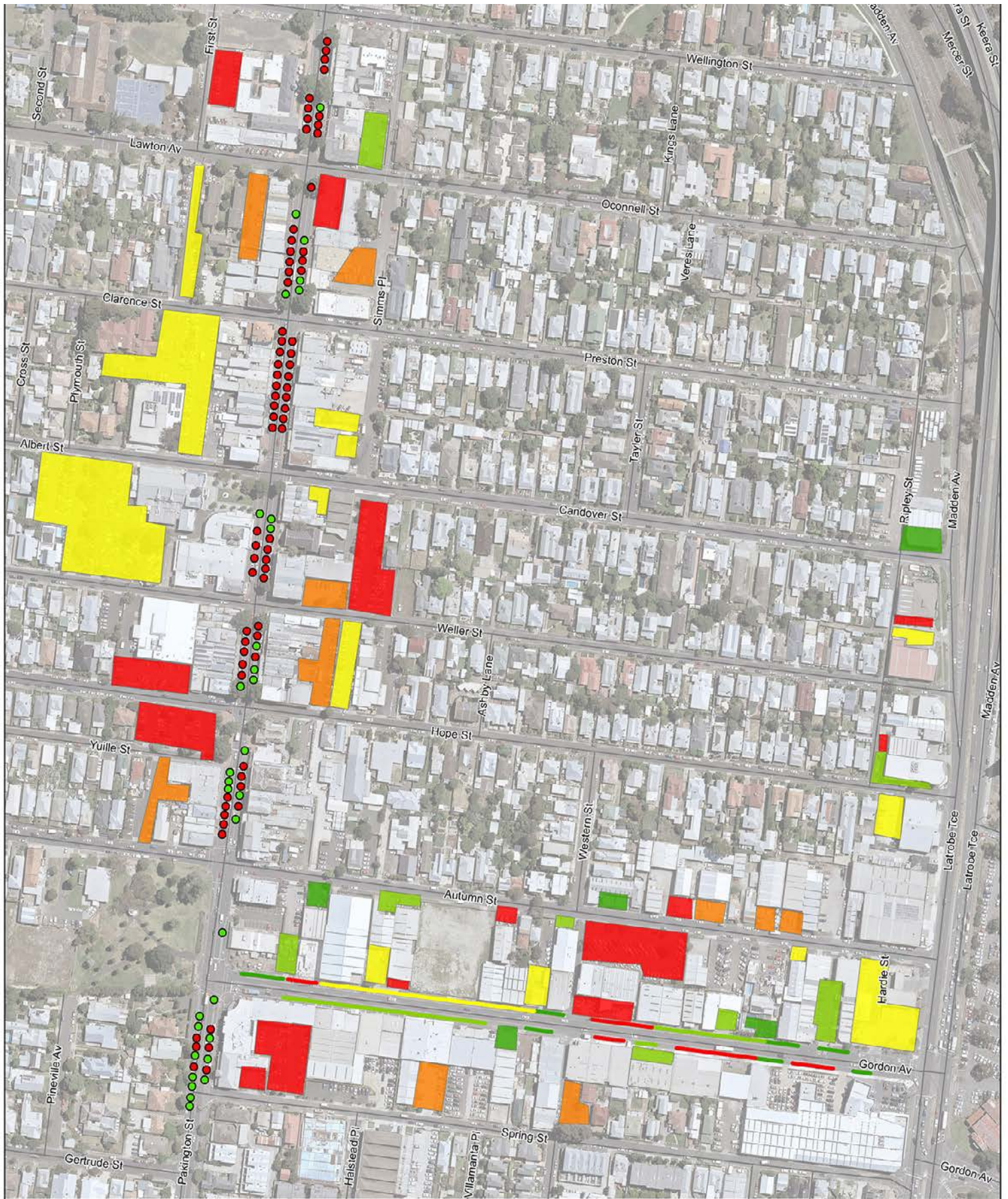


City of Greater Geelong  
Pakington Street Parking and Traffic Study

Job Number 31-36000  
Revision A  
Date 17/05/2018

Parking Occupancy  
Thursday 1330

Appendix B12



Paper Size A3  
 0 25 50 75  
 Metres  
 Map Projection: Transverse Mercator  
 Horizontal Datum: GDA 1994  
 Grid: GDA 1994 MGA Zone 55



City of Greater Geelong  
 Pakington Street Parking and Traffic Study

Job Number 31-36000  
 Revision A  
 Date 17/05/2018

Parking Occupancy  
 Thursday 1330

Appendix B12



Map Projection: Transverse Mercator  
Horizontal Datum: GDA 1994  
Grid: GDA 1994 MGA Zone 55

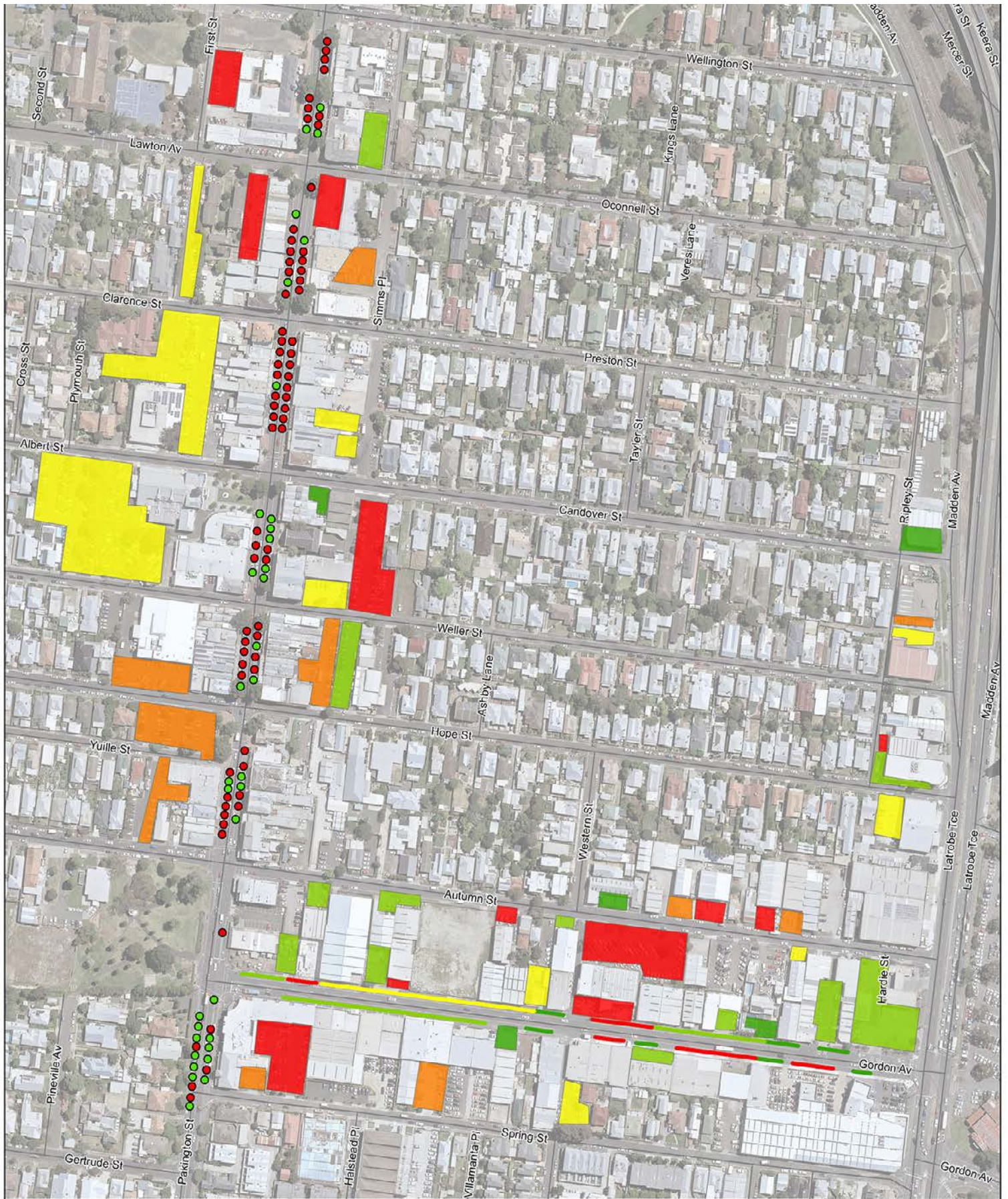


City of Greater Geelong  
Pakington Street Parking and Traffic Study

Job Number 31-36000  
Revision A  
Date 17/05/2018

Parking Occupancy  
Thursday 1400

Appendix B13



Map Projection: Transverse Mercator  
Horizontal Datum: GDA 1994  
Grid: GDA 1994 MGA Zone 55



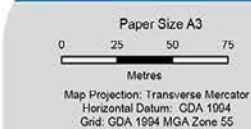
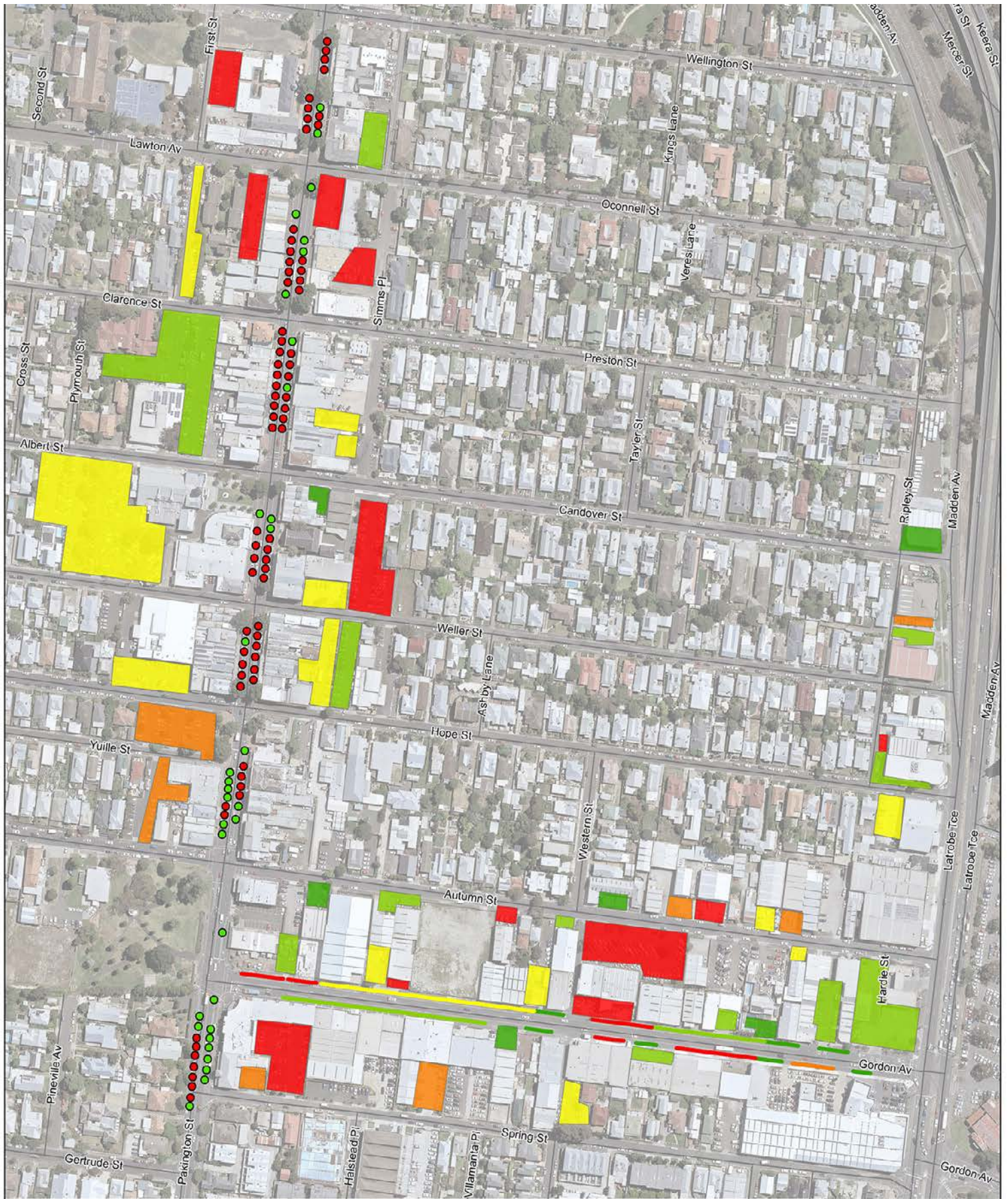
City of Greater Geelong  
Pakington Street Parking and Traffic Study

Job Number 31-36000  
Revision A  
Date 17/05/2018

Parking Occupancy  
Thursday 1400

Appendix B13





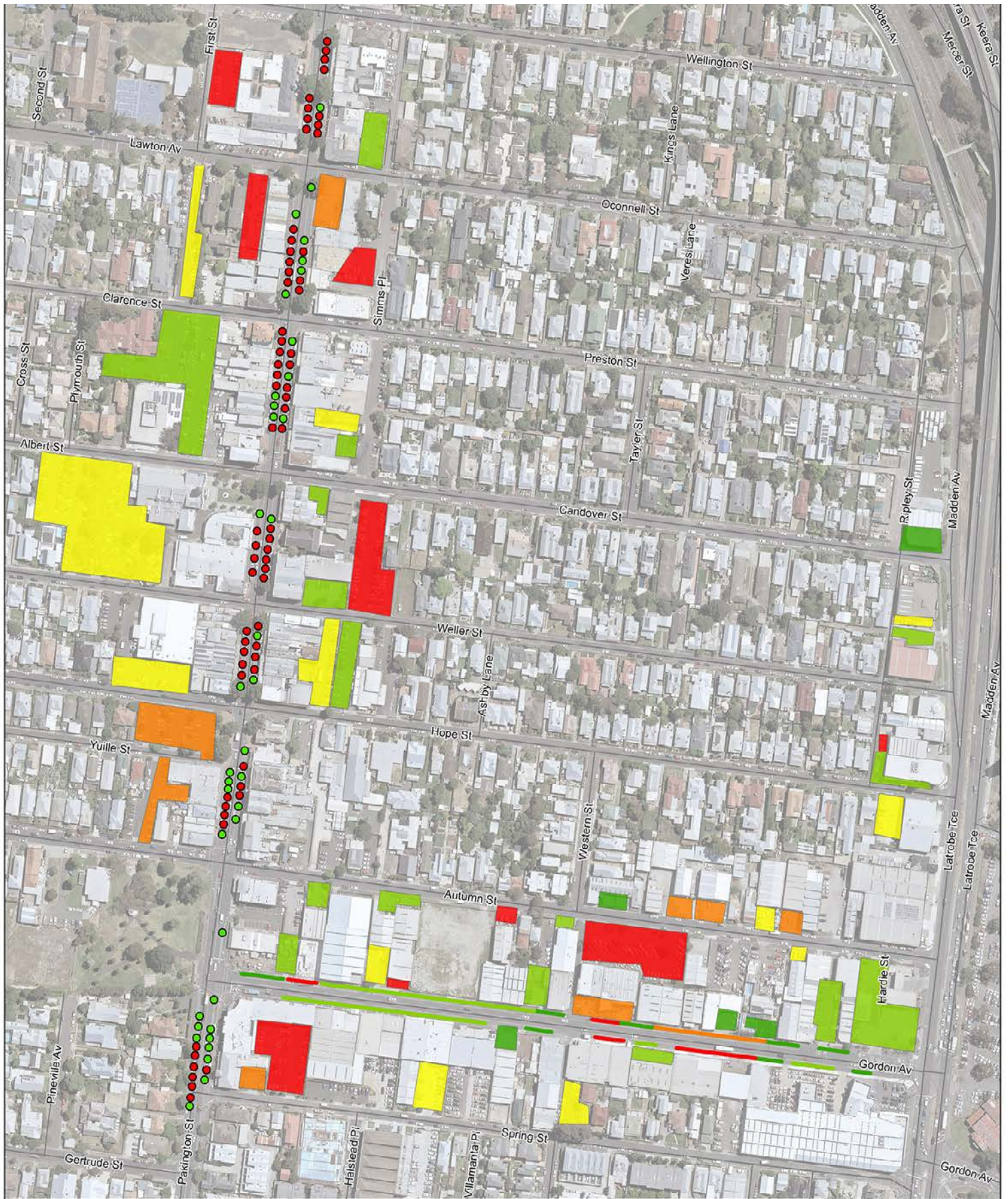
City of Greater Geelong  
Pakington Street Parking and Traffic Study

Job Number 31-36000  
Revision A  
Date 17/05/2018

Parking Occupancy  
Thursday 1430

Appendix B14





Map Projection: Transverse Mercator  
Horizontal Datum: GDA 1904  
Grid: GDA 1994 MGA Zone 55



City of Greater Geelong  
Pakington Street Parking and Traffic Study

Job Number 31-36000  
Revision A  
Date 17/05/2018

Parking Occupancy  
Thursday 1500

Appendix B15



Map Projection: Transverse Mercator  
Horizontal Datum: GDA 1994  
Grid: GDA 1994 MGA Zone 55

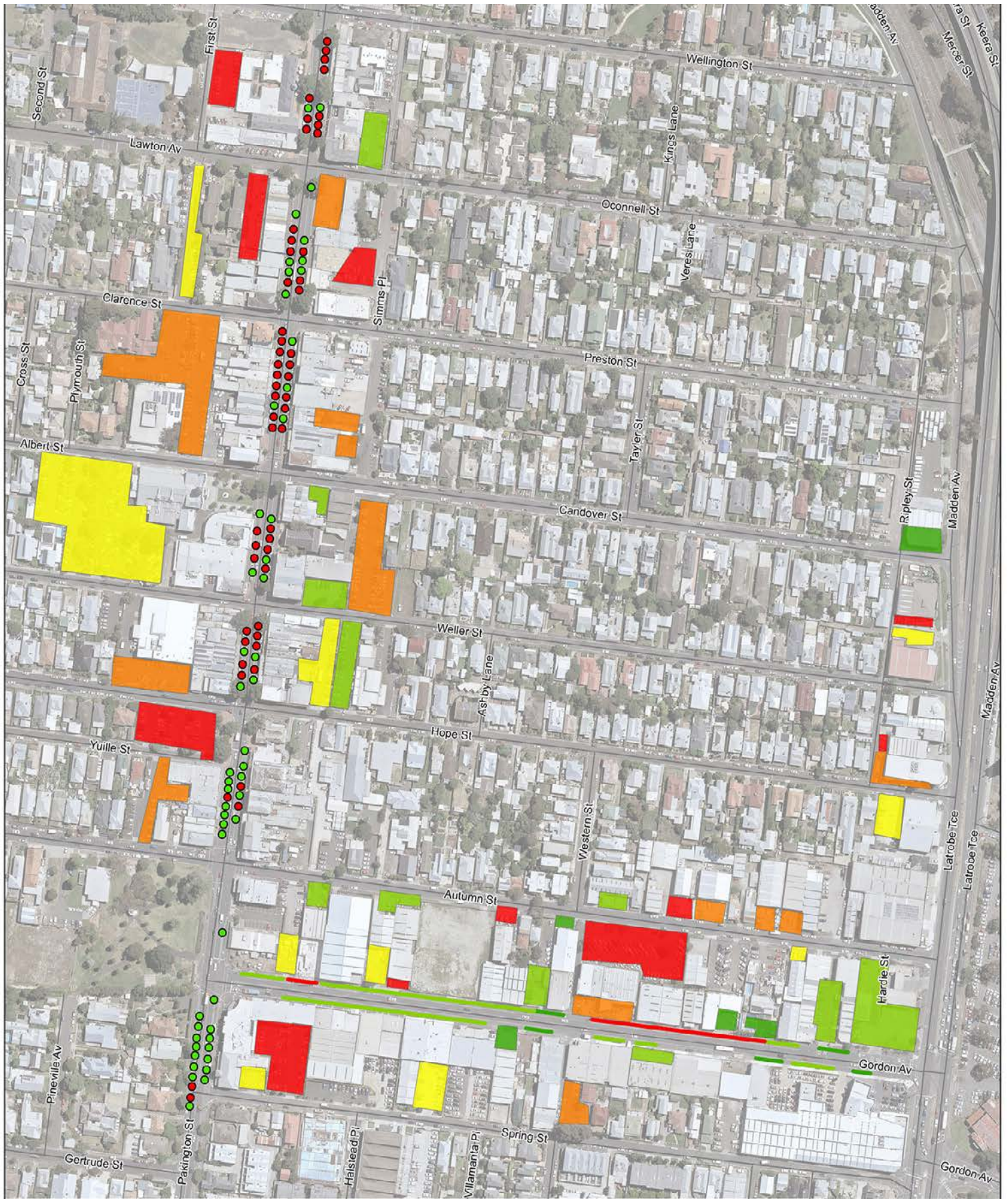


City of Greater Geelong  
Pakington Street Parking and Traffic Study

Job Number 31-36000  
Revision A  
Date 17/05/2018

Parking Occupancy  
Thursday 1530

Appendix B16



Map Projection: Transverse Mercator  
Horizontal Datum: GDA 1994  
Grid: GDA 1994 MGA Zone 55

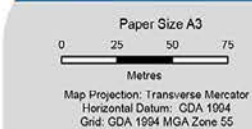


City of Greater Geelong  
Pakington Street Parking and Traffic Study

Job Number 31-36000  
Revision A  
Date 17/05/2018

Parking Occupancy  
Thursday 1530

Appendix B16

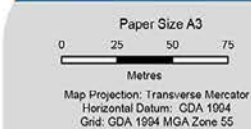


City of Greater Geelong  
Pakington Street Parking and Traffic Study

Job Number 31-36000  
Revision A  
Date 17/05/2018

Parking Occupancy  
Thursday 1600

Appendix B17



City of Greater Geelong  
Pakington Street Parking and Traffic Study

Job Number 31-36000  
Revision A  
Date 17/05/2018

Parking Occupancy  
Thursday 1600

Appendix B17



Map Projection: Transverse Mercator  
Horizontal Datum: GDA 1994  
Grid: GDA 1994 MGA Zone 55

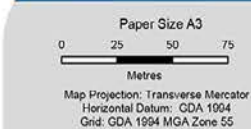


City of Greater Geelong  
Pakington Street Parking and Traffic Study

Job Number 31-36000  
Revision A  
Date 17/05/2018

Parking Occupancy  
Thursday 1630

Appendix B18



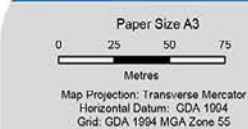
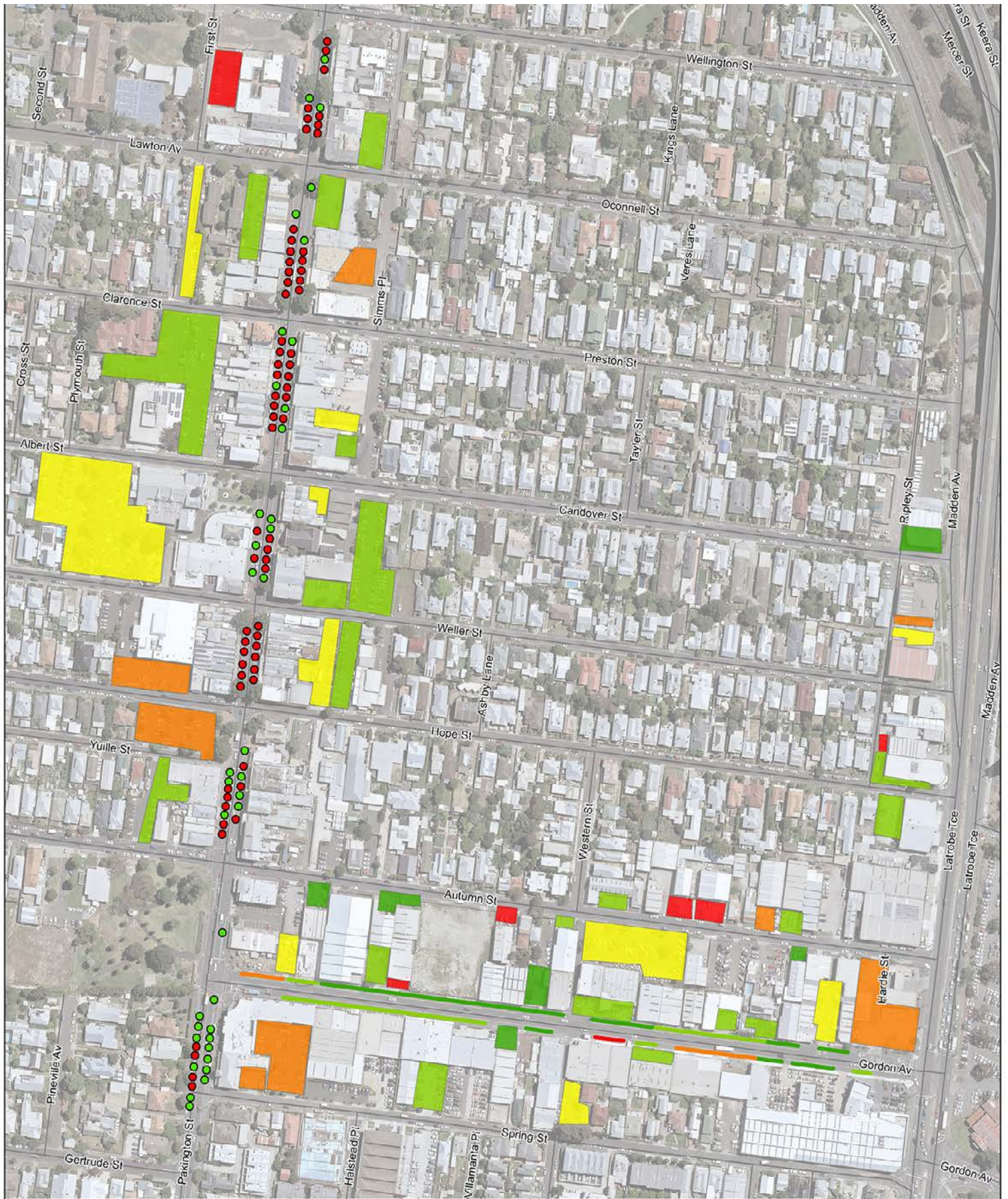
City of Greater Geelong  
Pakington Street Parking and Traffic Study

Job Number 31-36000  
Revision A  
Date 17/05/2018

Parking Occupancy  
Thursday 1630

Appendix B18





City of Greater Geelong  
Pakington Street Parking and Traffic Study

Job Number 31-36000  
Revision A  
Date 17/05/2018

Parking Occupancy  
Thursday 1700

Appendix B19



