

# Appendix D - Total Occupation



**Total occupation (minutes)**

Note: parking survey conducted at 15 minute intervals

- 15 - 120
- 120 - 270
- 270 - 450
- 450 - 600
- No visits (labelled)
- No Stopping



Map Projection: Transverse Mercator  
Horizontal Datum: GDA 1994  
Grid: GDA 1994 MGA Zone 55

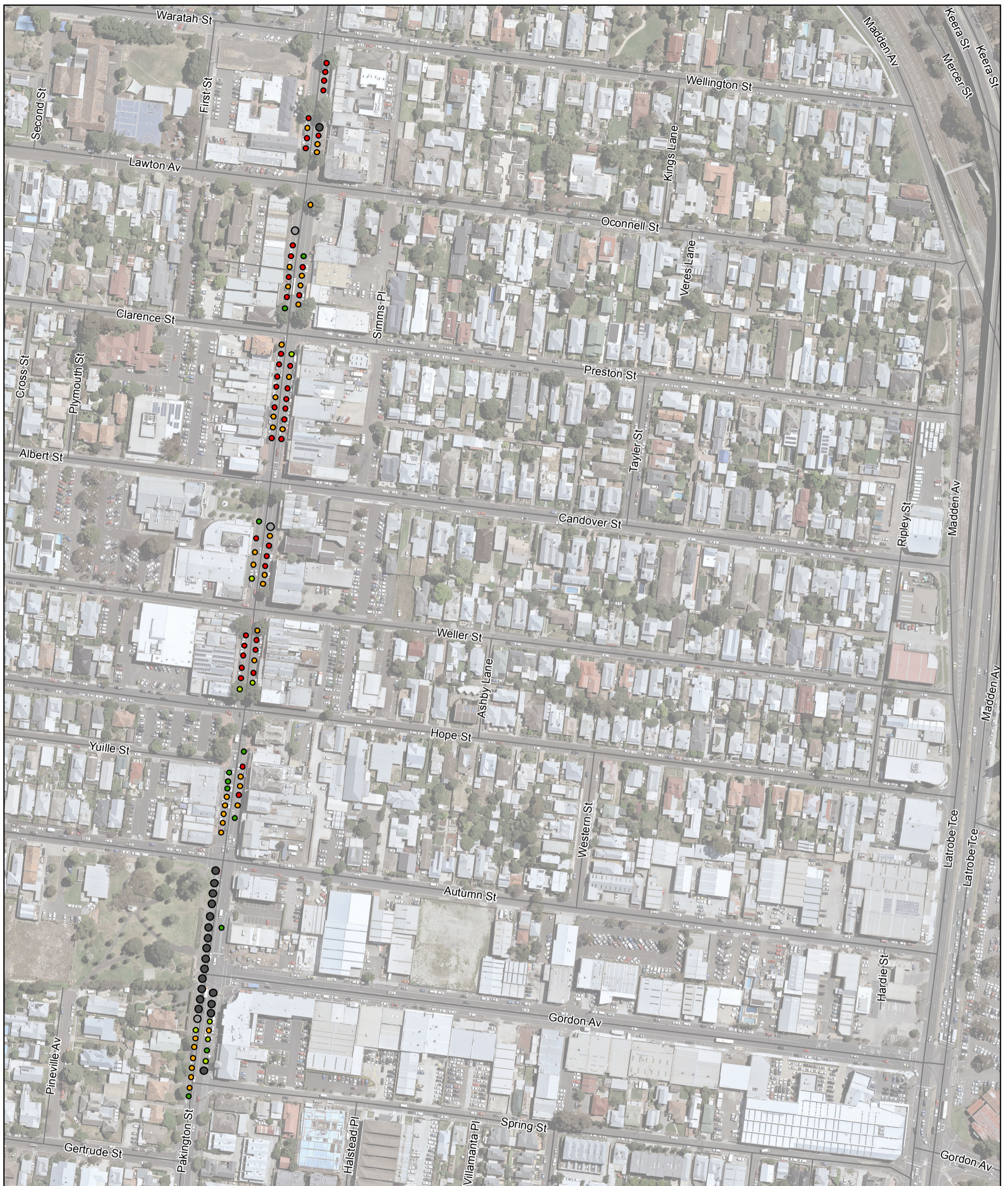


City of Greater Geelong  
Pakington Street Parking and Traffic Study

Job Number | 31-36000  
Revision | A  
Date | 17/05/2018

Thursday 22nd March  
Total Occupation

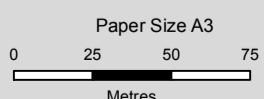
Appendix D1



**Total occupation (minutes)**

Note: parking survey conducted at 15 minute intervals

- 15 - 120
- 120 - 270
- 270 - 450
- 450 - 600
- No visits (labelled)
- No Stopping



Map Projection: Transverse Mercator  
Horizontal Datum: GDA 1994  
Grid: GDA 1994 MGA Zone 55



City of Greater Geelong  
Pakington Street Parking and Traffic Study

Job Number | 31-36000  
Revision | A  
Date | 17/05/2018

Thursday 22nd March  
Total Occupation

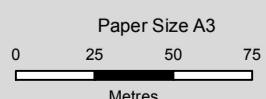
Appendix D1



**Total occupation (minutes)**

Note: parking survey conducted at 15 minute intervals

- 15 - 120
- 120 - 270
- 270 - 450
- 450 - 660
- No visits (labelled)
- No Stopping



Map Projection: Transverse Mercator  
Horizontal Datum: GDA 1994  
Grid: GDA 1994 MGA Zone 55



City of Greater Geelong  
Pakington Street Parking and Traffic Study

Job Number | 31-36000  
Revision | A  
Date | 17/05/2018

Saturday 24th March  
Total Occupation

Appendix D2



**Total occupation (minutes)**

Note: parking survey conducted at 15 minute intervals

- 15 - 120
- 120 - 270
- 270 - 450
- 450 - 660
- No visits (labelled)
- No Stopping



Map Projection: Transverse Mercator  
Horizontal Datum: GDA 1994  
Grid: GDA 1994 MGA Zone 55



City of Greater Geelong  
Pakington Street Parking and Traffic Study

Job Number | 31-36000  
Revision | A  
Date | 17/05/2018

Saturday 24th March  
Total Occupation

Appendix D2