

Appendix E - Average Stay Duration



Average stay duration (minutes)

Note: parking survey conducted at 15 minute intervals

- 15 - 60
- 60 - 120
- 120 - 270
- 270 - 555
- No visits (labelled)
- No Stopping



Map Projection: Transverse Mercator
Horizontal Datum: GDA 1994
Grid: GDA 1994 MGA Zone 55



City of Greater Geelong
Pakington Street Parking and Traffic Study

Job Number | 31-36000
Revision | A
Date | 17/05/2018

Thursday 22nd March
Average Stay Duration

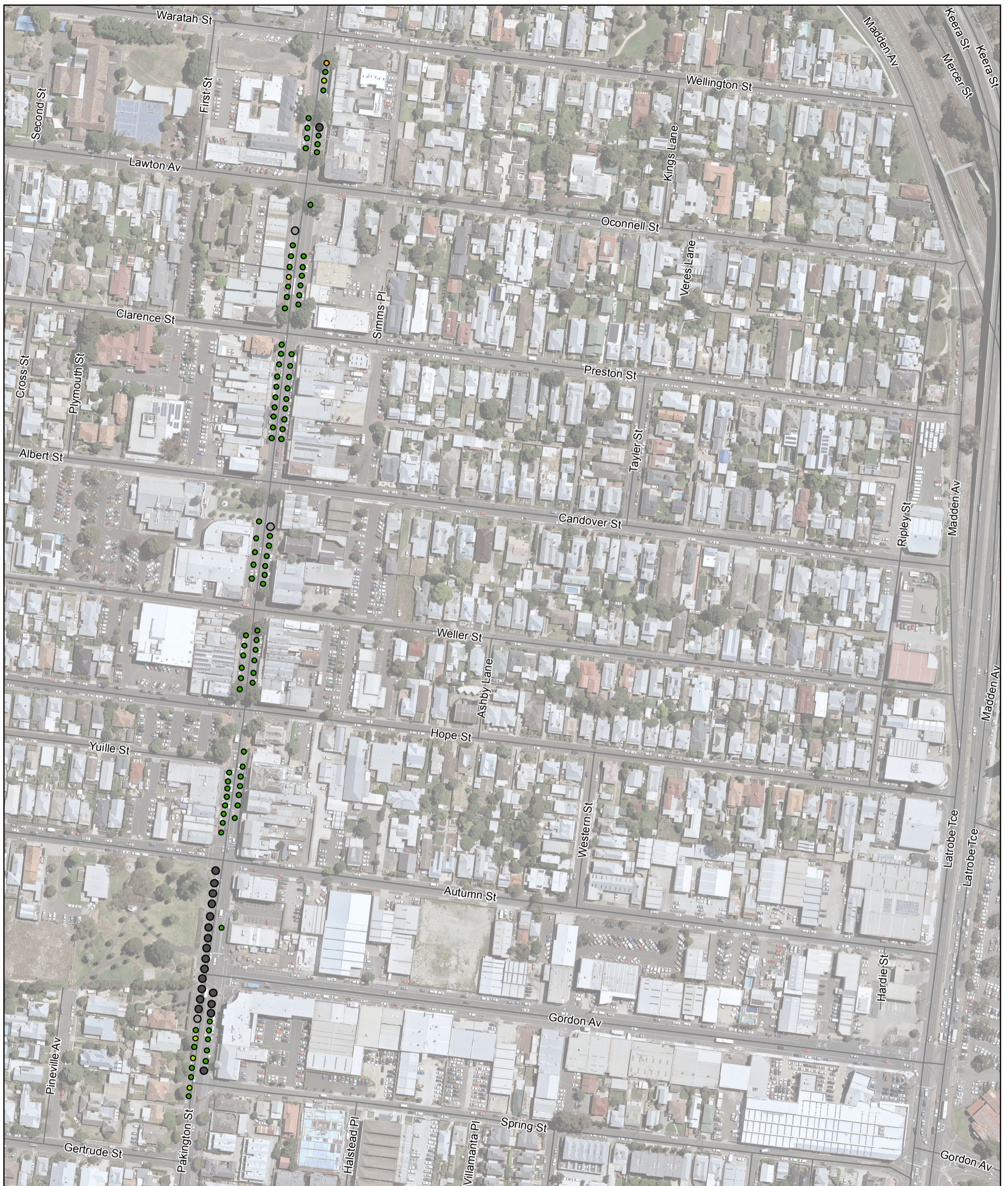
Appendix E1

G:\31\36000\GIS\Maps\Working\3136000_KBM_A3P.mxd

180 Lonsdale Street Melbourne VIC 3000 Australia T 61 3 8687 8000 F 61 3 8687 8111 E melmail@ghd.com W www.ghd.com

© 2018. Whilst every care has been taken to prepare this map, GHD (and DATA CUSTODIAN) make no representations or warranties about its accuracy, reliability, completeness or suitability for any particular purpose and cannot accept liability and responsibility of any kind (whether in contract, tort or otherwise) for any expenses, losses, damages and/or costs (including indirect or consequential damage) which are or may be incurred by any party as a result of the map being inaccurate, incomplete or unsuitable in any way and for any reason.

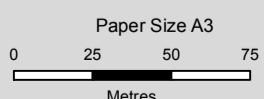
Data source: DELWP, Vicmap, 2018; GHD, Parking data, 2018; CoGG, imagery, 2017 Created by: savenables



Average stay duration (minutes)

Note: parking survey conducted at 15 minute intervals

- 15 - 60
- 60 - 120
- 120 - 270
- 270 - 555
- No visits (labelled)
- No Stopping



Map Projection: Transverse Mercator
Horizontal Datum: GDA 1994
Grid: GDA 1994 MGA Zone 55



City of Greater Geelong
Pakington Street Parking and Traffic Study

Job Number | 31-36000
Revision | A
Date | 17/05/2018

Thursday 22nd March
Average Stay Duration

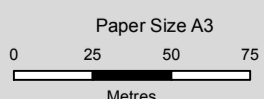
Appendix E1



Total occupation (minutes)

- 15 - 120
- 120 - 270
- 270 - 450
- 450 - 660
- No visits (labelled)
- No Stopping

Note: parking survey conducted at 15 minute intervals



Map Projection: Transverse Mercator
Horizontal Datum: GDA 1994
Grid: GDA 1994 MGA Zone 55



City of Greater Geelong
Pakington Street Parking and Traffic Study

Job Number | 31-36000
Revision | A
Date | 17/05/2018

Saturday 24th March
Average Stay Duration

Appendix E2



Total occupation (minutes)

- 15 - 120
- 120 - 270
- 270 - 450
- 450 - 660
- No visits (labelled)
- No Stopping

Note: parking survey conducted at 15 minute intervals



Map Projection: Transverse Mercator
Horizontal Datum: GDA 1994
Grid: GDA 1994 MGA Zone 55



City of Greater Geelong
Pakington Street Parking and Traffic Study

Job Number | 31-36000
Revision | A
Date | 17/05/2018

Saturday 24th March
Average Stay Duration

Appendix E2