



THE CITY OF
GREATER GEELONG

OUTDOOR SPORT AND RECREATION

SOCIAL INFRASTRUCTURE PLAN
GENERATION ONE: 2020-23

Council acknowledges Wadawurrung Traditional Owners of this land and all Aboriginal and Torres Strait Islander people who are part of the Greater Geelong community today.

ACKNOWLEDGEMENTS

The preparation of this Report has been a collaborative effort of our Council, all relevant Council departments, partner organisations, our community clubs, groups and associations, and the Greater Geelong community.

We would like to thank the involvement of all our key stakeholders for their collaboration, insight and commitment to the future of our community infrastructure and to a new way of working.

This plan was endorsed by council on 28 July 2020.

DISCLAIMER

This Report is prepared by the City of Greater Geelong. The Report is solely for the use of the City of Greater Geelong and is not intended to, and should not be used, or relied upon by anyone else. The City of Greater Geelong does not accept any duty of care, to any other person or entity other than itself.

The information contained in this document has been developed through an assessment of the current known state of the City's infrastructure, rigorous analysis of the available evidence, existing strategic guidance, plans and strategies, and extensive stakeholder and community consultation over the course of 2.5 years 2017 - 2020.

Information contained in the Report is current as at the relevant dates stated in the Report and may not reflect any event or circumstances which occur after the stated date. It has been prepared in good faith and neither the City of Greater Geelong, nor its servants, consultants, agents or staff shall be responsible in any way whatsoever to any person in respect to the report, including any errors or omission therein.

THE POLICY

The Social Infrastructure Planning and Investment Policy aims to provide Council and the City of Greater Geelong with a guide to fair and equitable decision making, and to provide our community with a clear understanding of Council's role and how decisions are made.

THE PLAN

The Social Infrastructure Plan will outline the needs of our community, investment priorities and the way forward to ensure that people know what is planned in the place that they live.

The plan is intended to provide Council and the community with a single, simpler and more integrated strategic summary of Council's investment priorities over the next 1-3 years.

The plan will be closely monitored and updated each year in line with the realisation of transformational elements identified in the document and as our understanding of social infrastructure continues to mature and grow.

THE NETWORK REPORT

The network reports provide a summary of social infrastructure needs and requirements for each specific network over the next 1-3 years, understanding that the plan component identified in each will be updated annually, as new information becomes available.

The identified projects within the summary plan for each network are broken down into five key streams:

- New
- Renew
- Maintenance
- Planning
- Services / People

This network report specifically relates to Outdoor Sport and Recreation - Cricket Ovals, Football Ovals, Hockey Pitches, Rugby Pitches, Soccer Pitches, Baseball / Softball Diamonds, Athletics Tracks, Netball Courts (outdoor), Tennis courts (outdoor) and Multipurpose Courts (outdoor), Sports Pavilions and Change Rooms, and Scout Halls.

For a complete overview of all the social infrastructure needs and priorities across the City of Greater Geelong, please refer to the Social Infrastructure Plan - Generation One: 2020 - 2023.

NETWORK PROFILES

There are 13 individual network reports covering a diverse range of community places, spaces and services.

Generation One: The Networks Covered



Early Years



Youth Spaces



Libraries



Community Meeting and Program Spaces



Arts and Culture



Open Space



Play Spaces



Aquatics and Leisure



Indoor Sport and Recreation



Outdoor Sport and Recreation
(including sports pavilions)
(THIS NETWORK REPORT)



Golf



Cycling and Trails



Public Toilets

WHAT CAN YOU FIND IN EACH NETWORK PROFILE AND PLAN

Overview of the network + Map

Each network consists of an introduction including background context and a map of known facilities, an overview of what the network is, what it is made up of, it's value and what some of the emerging issues and opportunities are, in addition to any related plans, community insights and key considerations.

Our guiding documents

A summary of related documents including strategies, plans, policies, needs assessments and technical reports.

What our community told us

A summary of relevant community feedback and insights.

Generation One – Things we considered

A summary of key considerations relating to each network (i.e. legislative changes, emerging issues and trends).

Current State - Snapshot

A snapshot of what we know about the network so far including, known provision, condition, travel accessibility and service provision.

A gap analysis based on existing industry benchmarks compared with today's provision.

Indicators of need by planning area

Provision, population, social and health indicators by each planning area to help inform any relevant areas of need and opportunities.

Strategic focus areas and directions

In response to the needs and opportunities identified, this section outlines the strategic focus areas and directions for each network, including a high-level mantra to guide planning and investment for the next three years.

The Plan: 2020 - 2023

Generation One of the plan provides a summary table of identified projects by 'Network' broken down into five streams – New, Renew, Maintenance, Planning, and Services / People.

OUTDOOR SPORT AND RECREATION



SCOPE

Cricket Ovals, Football Ovals, Hockey Pitches, Rugby Pitches, Soccer Pitches, Baseball / Softball Diamonds, Athletics Tracks, Netball Courts (outdoor), Tennis courts (outdoor) and Multipurpose Courts (outdoor), Sports Pavilions and Change Rooms, and Scout Halls.

The provision of sport and recreation facilities, in partnership with clubs and volunteers, plays a significant role in the health and wellbeing of our community and we want to ensure that sports clubs and community groups continue to thrive.

There is a clear need to sustainably plan and provide for all community and social infrastructure and Council will have a strong focus on exploring the service synergies and shared use opportunities that exist.

The Australian Infrastructure Audit (2018), identified that in regional areas, sporting and community facilities often play a central role in social cohesion, while in urban areas, pressure is being placed on scarce land and there is a need to protect and maintain existing natural spaces to cope with intensification of urban areas and to help mitigate the urban heat island effect.

Historically, Council has had a strong focus on supporting a core suite of sport, recreation and leisure facilities throughout the municipality however, there is a need to broaden our planning to consider the diversity in activity types and preferences of our community.

Many of Council's community facilities and assets are ageing and will eventually need renewal and repair. As our community continues to grow so too does the pressure and demand for access to community facilities and spaces.

The management, maintenance and increasing costs of providing community assets plays a key part in the City's capacity to meet our community obligations, now and into the future.

Council, and the community, is increasingly being asked to consider their priorities in order to guide overall provision and resource allocation. Demand for new sport facilities across the City is likely to continue to grow, particularly within designated urban growth areas, however a focus on maintaining and improving existing assets to maximise usage, maintain safety and meet contemporary user expectations will also increase in demand.

A key challenge continues to be effective and sustainable asset maintenance and renewal, particularly considering legislative financial constraints (i.e. rate and grant capping), growth pressures and ageing infrastructure and there is a strong need to realign and manage community expectations going forward. The consolidation of existing funding programs can help to achieve more holistic and integrated renewal and maintenance outcomes.

The City must adopt a more strategic approach to managing its public property and assets, to ensure the local community gets the best value from our broad range of public facilities.

It is a key focus of Council to continue to develop, activate and support sport and recreation facilities and clubs, based on a sound decision-making framework to ensure equity, transparency and financial stability for the City.

Despite the large number of facilities we have the opportunity to address the inequity in provision and condition across the municipality and ensure that any investment or development is underpinned by a sound rationale and clear set of principles, creating a fairer network for all.

This also means that we will be looking at ways to build capacity and get the most out of our existing facilities including any future facilities we develop. We will be looking for opportunities to create assets that can be used by multiple community groups and clubs, and for various types of activity. This will ensure that we encourage and build community facilities that can be flexibly used and sustainably managed, responding to the community's needs as they change over time.

OUR GUIDING DOCUMENTS:

The following related documents were used to inform this Plan (including strategic plans, policies, legislation and infrastructure plans):

- Council Plan (2018 - 2022)
- City of Greater Geelong Sport, Leisure and Recreation Needs Study – Background Report (2017)
- G21 Regional Sports Plans
- G21 Regional Football (Soccer) Strategy (2013 - 2023)
- G21 AFL and Barwon Region Strategy (2015 - 2025)
- G21 Regional Tennis Strategy (2015 - 2025)
- G21 and Cricket Victoria Barwon Regional Cricket Strategy (2019 - 2029)
- G21 Regional Hockey Strategy (2019 - 2019)
- City of Greater Geelong Physical Activity Strategy (2014 - 2017)
- Armstrong Creek Sports Development Plan (2013)
- Various master plans, concept plans and development plans.

WHAT OUR COMMUNITY TOLD US:

- **Maintain What We Have:** Participating groups were generally happy with the space they currently use but felt that some maintenance programs and associated service standards needed improvement, with specific reference to; public toilets, playgrounds, parks, tracks, trails, roadside verges and nature strips. Young people who participated also highlighted the importance of maintenance standards around the places and spaces they use.
- **Sports Infrastructure:** With continuing growth in participation rates in sport and more recently the significant growth in women's sport, facilities and grounds are being challenged to meet demand. Participating groups felt that extended play / practice time is being hindered by the lack of lights on activity spaces and while some clubs are working in partnerships with others to find innovative solutions there is still a need to look at building capacity to meet demand into the future.

- **Competing Access to Community Infrastructure:**

Population growth affects all social infrastructure. Schools and educational institutions are also experiencing growth and as a result they are increasing their reliance and use of community infrastructure. This in turn can impact the amount of access time community groups have for the infrastructure they need.

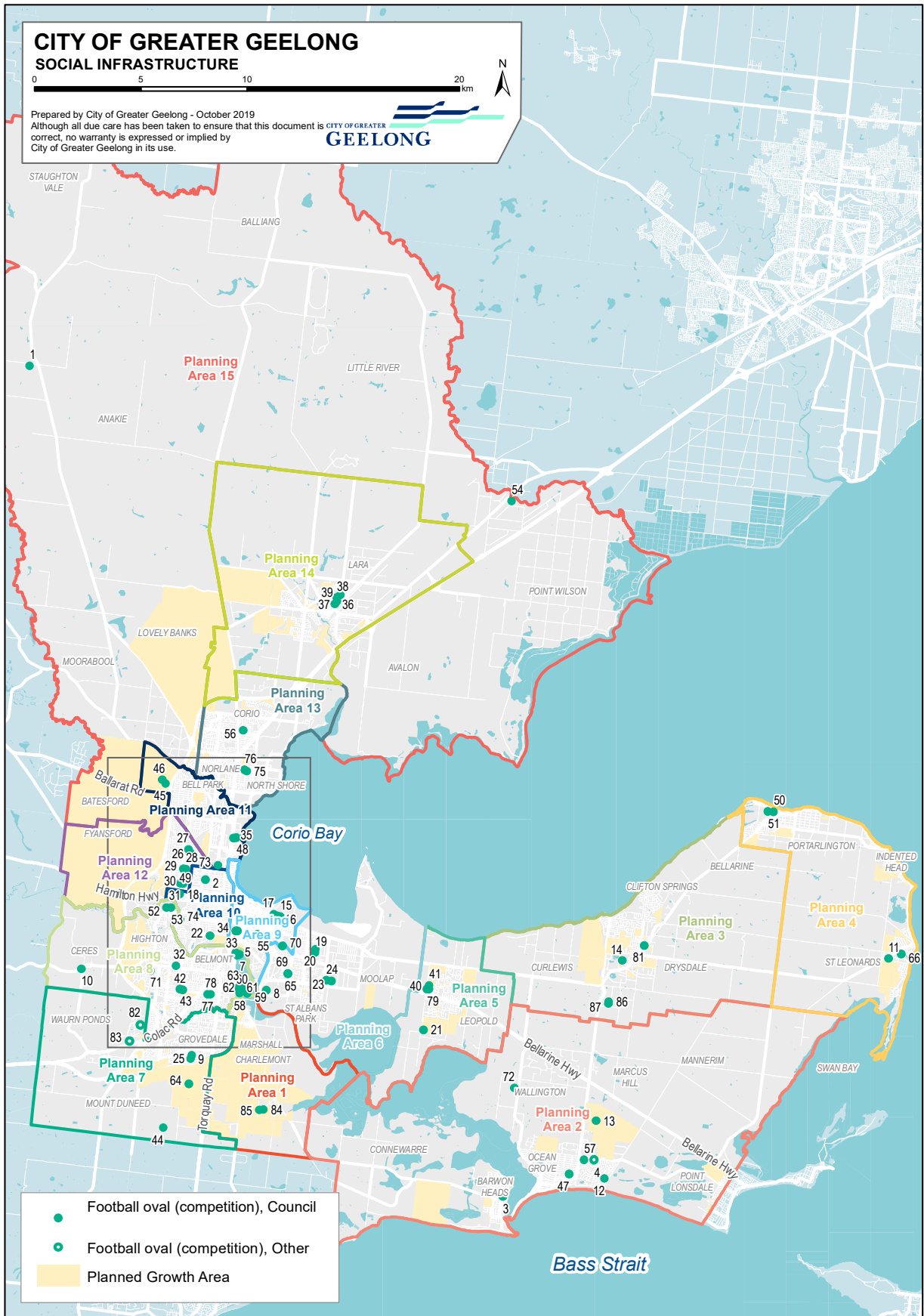
THINGS WE CONSIDERED:

- Anecdotally we know that there is a vast difference in condition and quality of facilities across the network. Understanding the building condition, capacity, functionality and sustainability across the network is key.
- Participation, usage and occupancy of sport and recreation facilities is not well known.
- Need to consider the conversion and adaptability of the network to provide for more diverse sports and activities.
- Building capacity across the existing network is key to meet the increasing demand on places and spaces. Building capacity includes working with sports clubs and community groups in the activation, promotion and planning for facilities.
- Consider realignment of renewal, planning and development programs going forward to better respond to needs and value managed outcomes.
- Recognising that the health of the increasing number of older Australians (aged 55+) and providing more opportunities for whole-of-life participation.

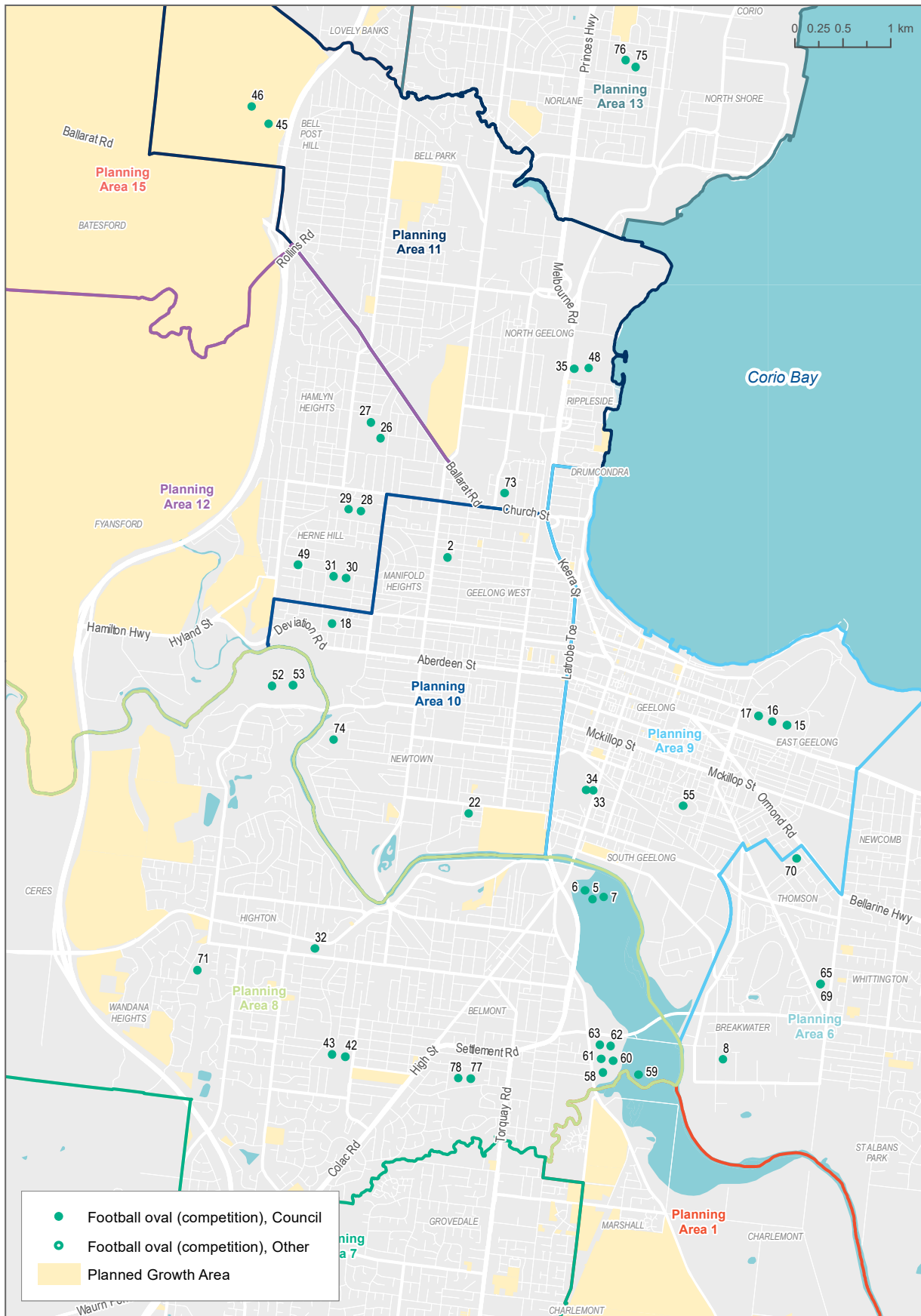
MAP 11 – OUTDOOR FOOTBALL // MAP 12 – OUTDOOR CRICKET

MAP REF	(FOOTBALL OVALS) NAME	MAP REF	(FOOTBALL OVALS) NAME	MAP REF	(CRICKET OVALS) NAME	MAP REF	(CRICKET OVALS) NAME
1	Anakie Reserve	61	South Barwon Reserve	1	Anakie Reserve	56	Peter Lowe Reserve
2	Bakers Oval	62	South Barwon Reserve	2	Bakers Oval	57	Portarlington Recreation Reserve
3	Barwon Heads Village Park	63	South Barwon Reserve	3	Barwon Heads Village Park	58	Portarlington Recreation Reserve
4	Bellarine Secondary College	64	Sovereign Drive Reserve	4	Bellarine Secondary College	59	Queens Park
5	Belmont Common	65	St Albans Reserve	5	Belmont Common	60	Queens Park
6	Belmont Common	66	St Leonards Recreation Reserve	6	Belmont Common	61	Rees Reserve
7	Belmont Common	67	Stead Park	7	Belmont Common	62	Richmond Oval
8	Breakwater Reserve	68	Stead Park	8	Breakwater Reserve	63	Shell Oval
9	Burdoo Recreation Reserve	69	Thomson Recreation Reserve	9	Breamlea Reserve	64	Shell Rd Reserve
10	Ceres Recreation Reserve	70	Thomson Recreation Reserve	10	Burdoo Recreation Reserve	65	South Barwon Reserve
11	St Leonards Charles Mccarthy Memorial Oval	71	Tim Hill Reserve	11	Ceres Recreation Reserve	66	South Barwon Reserve
12	Collendina Recreation Reserve	72	Wallington Reserve	12	St Leonards Charles Mccarthy Memorial Oval	67	South Barwon Reserve
13	Devlins Road Reserve - Sports Ovals (Oakdene)	73	Western Oval	13	Collendina Recreation Reserve	68	South Barwon Reserve
14	Drysdale Recreation Reserve	74	Windmill Reserve	14	Devlins Road Reserve - Sports Ovals (Oakdene)	69	South Barwon Reserve
15	Eastern Park	75	Windsor Park	15	Drysdale Recreation Reserve	70	South Barwon Reserve
16	Eastern Park	76	Windsor Park	16	Eastern Park	71	Sovereign Drive Reserve
17	Eastern Park	77	Winter Reserve	17	Eastern Park	72	St Albans Reserve
18	Elderslie Reserve	78	Winter Reserve	18	Eastern Park	73	St Leonards Recreation Reserve
19	Ervin Reserve	79	Leopold Football Netball Club	19	Eastern Park	74	Thomson Recreation Reserve
20	Ervin Reserve	80	King Lloyd Reserve	20	Elderslie Reserve	75	Thomson Recreation Reserve
21	Estuary Oval	81	Wathaurong Reserve	21	Ervin Reserve	76	Tim Hill Reserve
22	Frier Reserve	82	Deakin University (Waurn Ponds Campus)	22	Ervin Reserve	77	Wallington Reserve
23	Grinter Reserve	83	Deakin University Waurn Ponds Campus - Sports Oval & Arches	23	Estuary Oval	78	Western Oval
24	Grinter Reserve	84	Armstrong Creek East (Central Boulevard) - Oval 1	24	Evans Reserve	79	Windmill Reserve
25	Grovedale Secondary College Oval	85	Armstrong Creek East (Central Boulevard) - Oval 2	25	Flinders Peak	80	Windsor Park
26	Hamlyn Park	86	Drysdale Sporting Precinct - Oval 1	26	Frier Reserve	81	Windsor Park
27	Hamlyn Park - School Ovals	87	Drysdale Sporting Precinct - Oval 2	27	Grinter Reserve	82	Winter Reserve
28	Harold Hurst Reserve	88	Breamlea Sports Oval	28	Grinter Reserve	83	Winter Reserve
29	Harold Hurst Reserve			29	Grovedale Recreation Reserve	84	Leopold Football Netball Club
30	Herne Hill Reserve			30	Hamlyn Park	85	Wathaurong Reserve
31	Herne Hill Reserve			31	Hamlyn Park - School Ovals	86	Deakin University (Waurn Ponds Campus)
32	Highton Reserve			32	Harold Hurst Reserve	87	Deakin University Waurn Ponds Campus - Sports Oval & Arches
33	GMHBA Stadium- Kardinia Park			33	Herne Hill Reserve	88	Armstrong Creek East (Central Boulevard) - Oval 1
34	Kardinia Park			34	Herne Hill Reserve	89	Armstrong Creek East (Central Boulevard) - Oval 2
35	Osborne Park - Keith Barclay Oval 1			35	Highton Reserve	90	Drysdale Sporting Precinct - Oval 1
36	Lara Recreation Reserve			36	GMHBA Stadium- Kardinia Park	91	Drysdale Sporting Precinct - Oval 2
37	Lara Recreation Reserve			37	Kardinia Park	92	Breamlea Sports Oval
38	Lara Recreation Reserve			38	Kardinia Park		
39	Lara Recreation Reserve			39	Osborne Park - Keith Barclay Oval 1		
40	Leopold Memorial Recreation Reserve			40	King Lloyd Reserve		
41	Leopold Memorial Recreation Reserve			41	King Lloyd Reserve		
42	McDonald Reserve			42	Lara Recreation Reserve		
43	McDonald Reserve			43	Lara Recreation Reserve		
44	Mt Duneed Recreation Reserve			44	Lara Recreation Reserve		
45	Myers Reserve			45	Lara Recreation Reserve		
46	Myers Reserve			46	Lara Recreation Reserve		
47	Ocean Grove Memorial Reserve			47	Leopold Memorial Recreation Reserve		
48	Osborne Park Oval 2			48	Leopold Memorial Recreation Reserve		
49	Peter Lowe Reserve			49	McDonald Reserve		
50	Portarlington Recreation Reserve			50	McDonald Reserve		
51	Portarlington Recreation Reserve			51	Mt Duneed Recreation Reserve		
52	Queens Park			52	Myers Reserve		
53	Queens Park			53	Myers Reserve		
54	Rees Reserve			54	Ocean Grove Memorial Reserve		
55	Richmond Oval			55	Osborne Park Oval 2		
56	Shell Oval						
57	Shell Rd Reserve						
58	South Barwon Reserve						
59	South Barwon Reserve						
60	South Barwon Reserve						

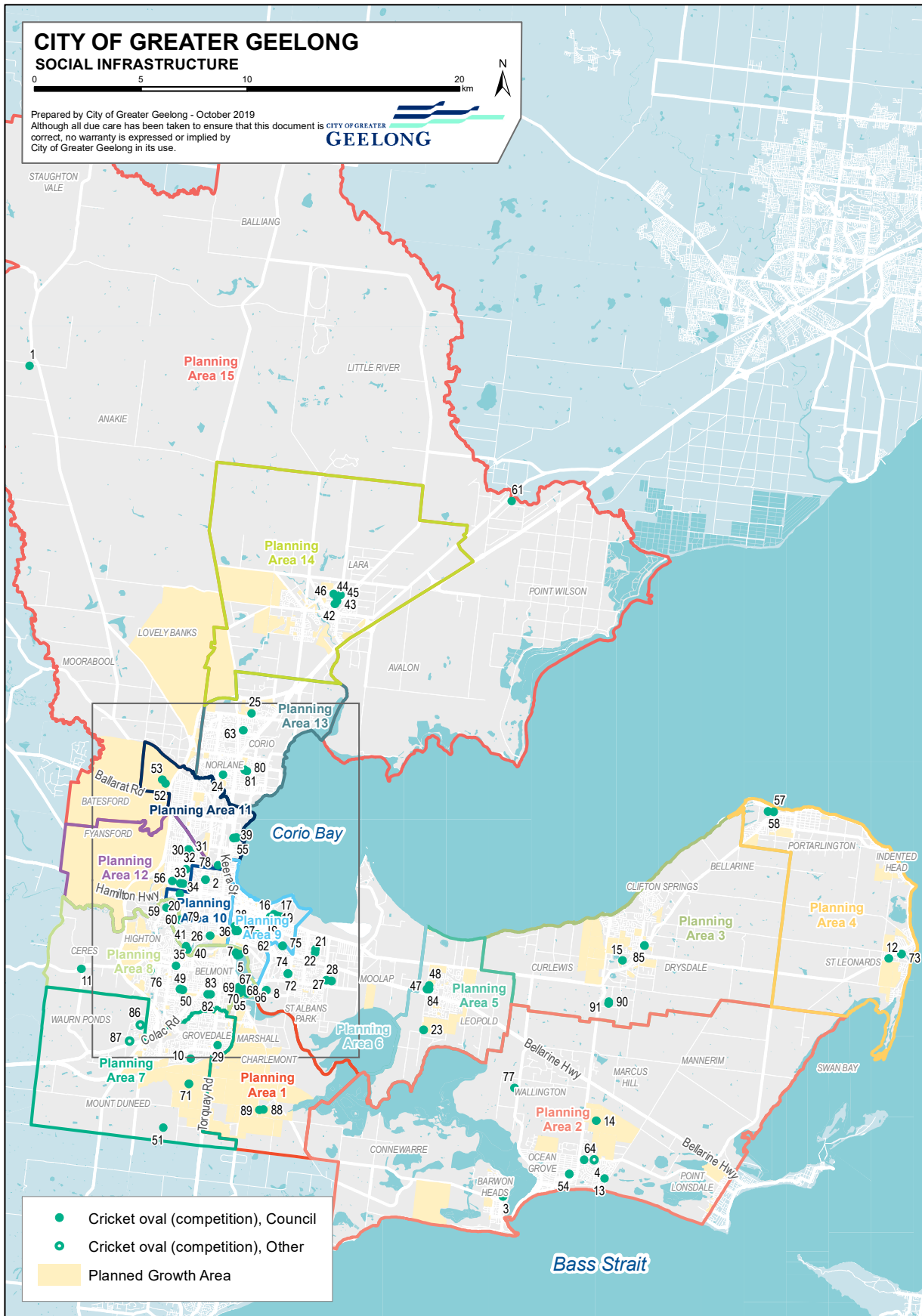
MAP 11 - OUTDOOR SPORTS FIELDS - FOOTBALL



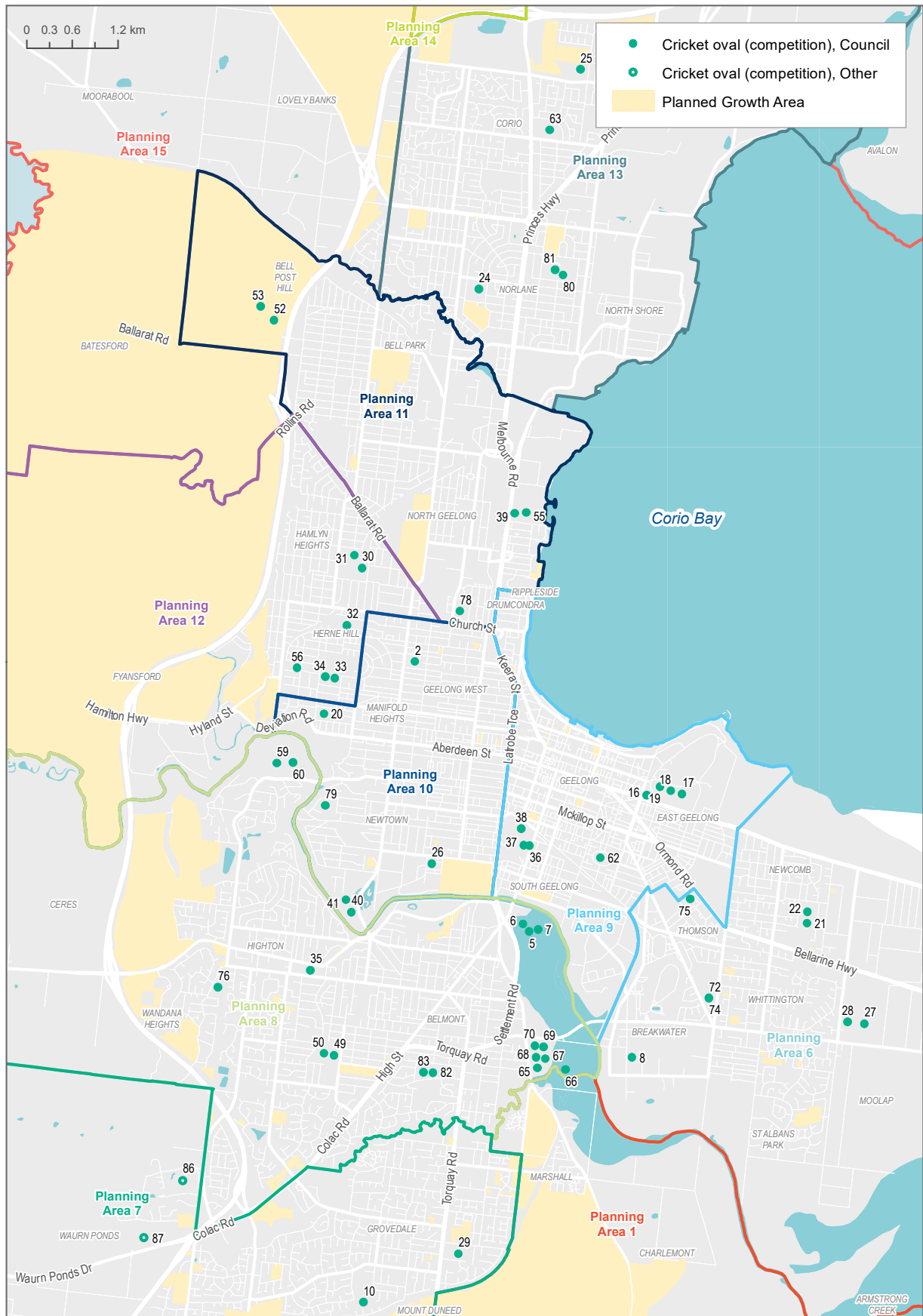
MAP 11B - OUTDOOR SPORTS FIELDS - FOOTBALL INSET



MAP 12A - OUTDOOR SPORTS FIELDS - CRICKET



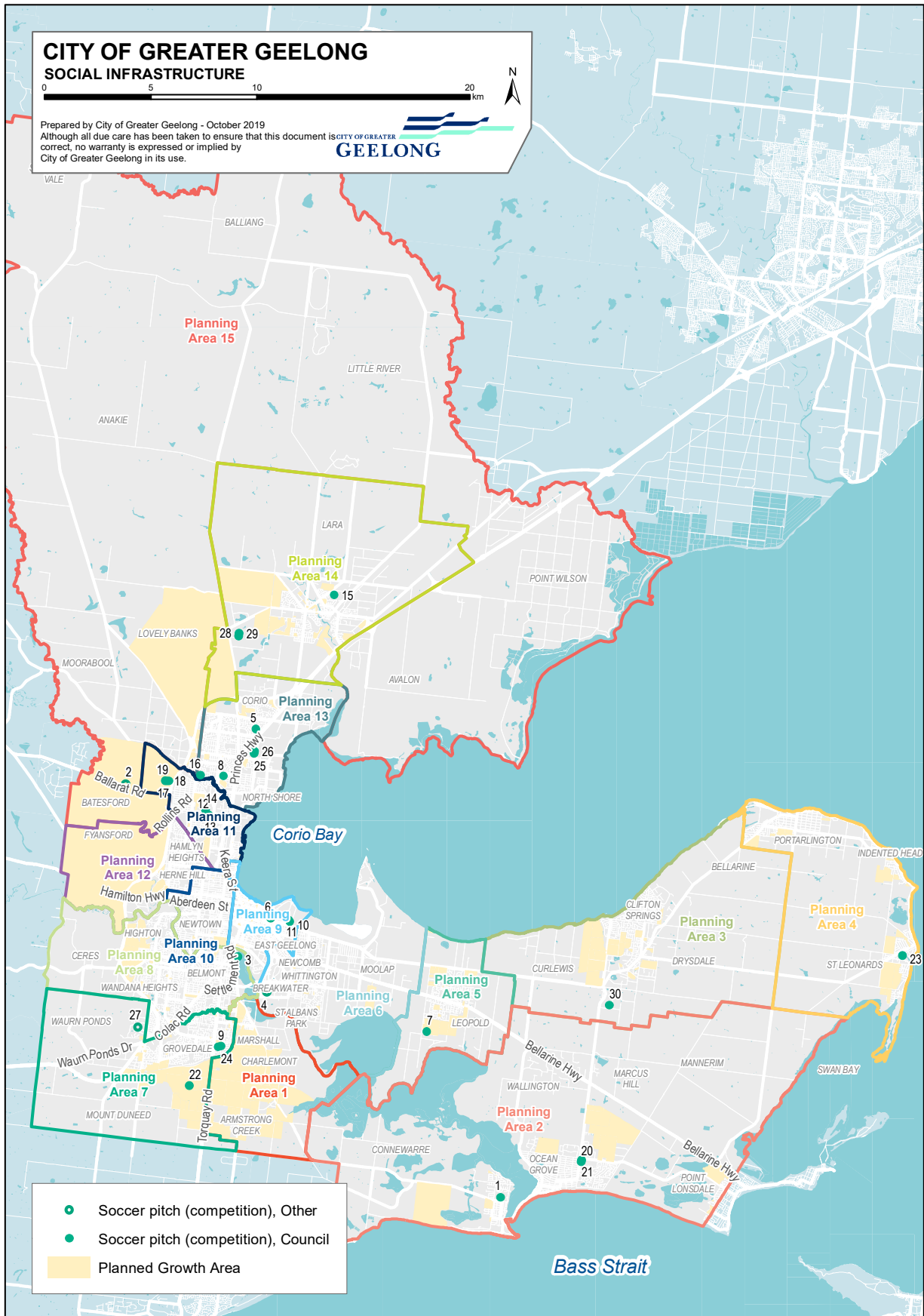
MAP 12B - OUTDOOR SPORTS FIELDS - CRICKET INSET



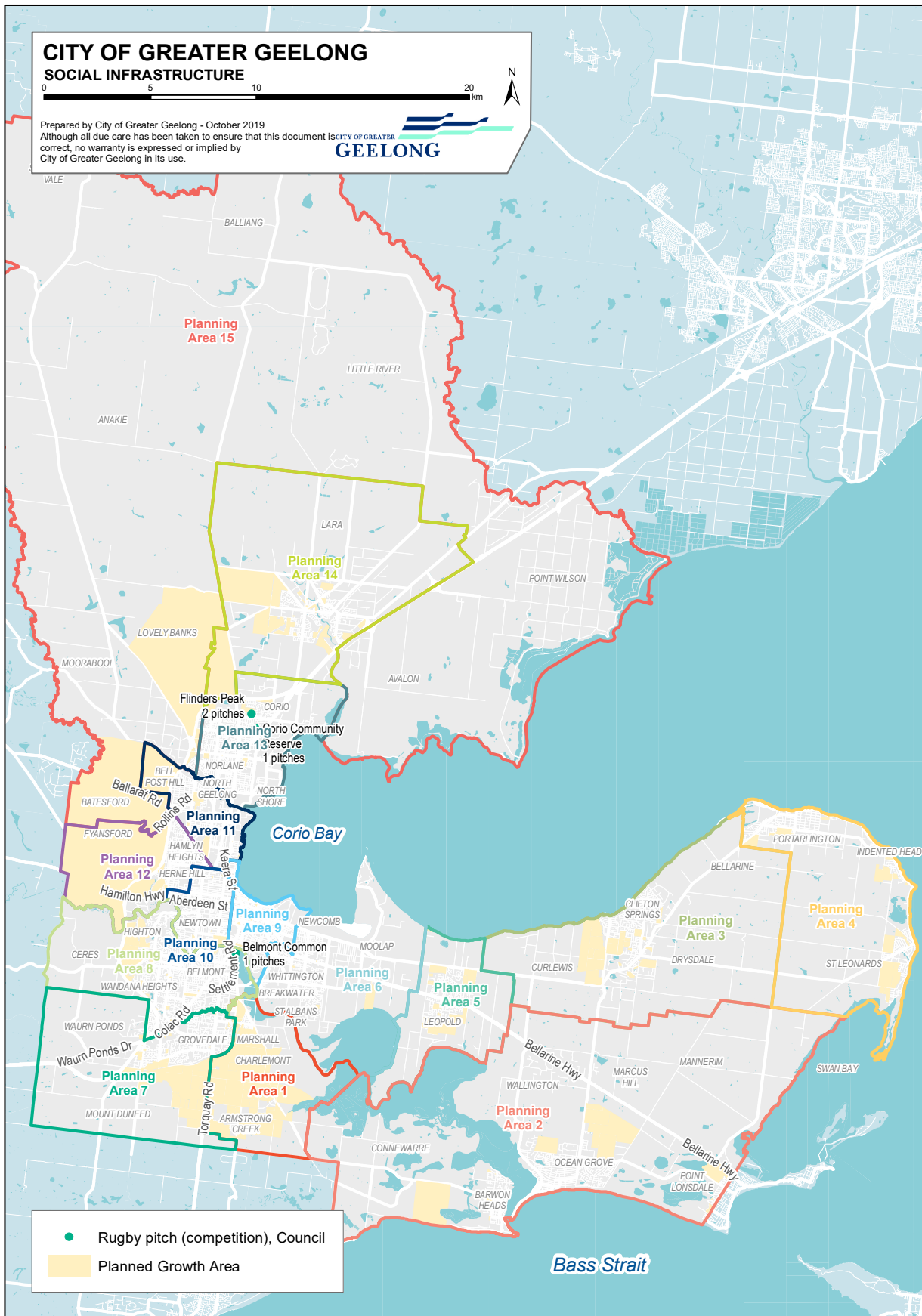
MAP 13 – OUTDOOR SOCCER // MAP 14 – OUTDOOR RUGBY

MAP REFERENCE	NAME	MAP REFERENCE	NAME
1	Barwon Heads Village Park	1	Belmont Common
2	Bell Park Sports Club - Pavilion	2	Corio Community Reserve
3	Belmont Common	3	Flinders Peak
4	Breakwater Eagles Soccer Club - White Eagle House		
5	Corio Community Reserve		
6	Eastern Park		
7	Estuary Soccer		
8	Evans Reserve		
9	Grovedale Recreation Reserve		
10	Howard Glover Reserve		
11	Howard Glover Reserve		
12	Hume Reserve		
13	Hume Reserve		
14	Hume Reserve		
15	Lara Recreation Reserve		
16	Leisuretime Centre		
17	Myers Reserve		
18	Myers Reserve		
19	Myers Reserve		
20	Shell Rd Reserve		
21	Shell Rd Reserve		
22	Sovereign Drive Reserve		
23	St Leonards Recreation Reserve		
24	Grovedale Reserve - Synthetic Training Pitch		
25	Stead Park		
26	Stead Park		
27	Deakin University (Wairn Ponds Campus)		
28	North Geelong Soccer Club		
29	North Geelong Soccer Club		

MAP 13 - OUTDOOR SPORTS FIELDS - SOCCER



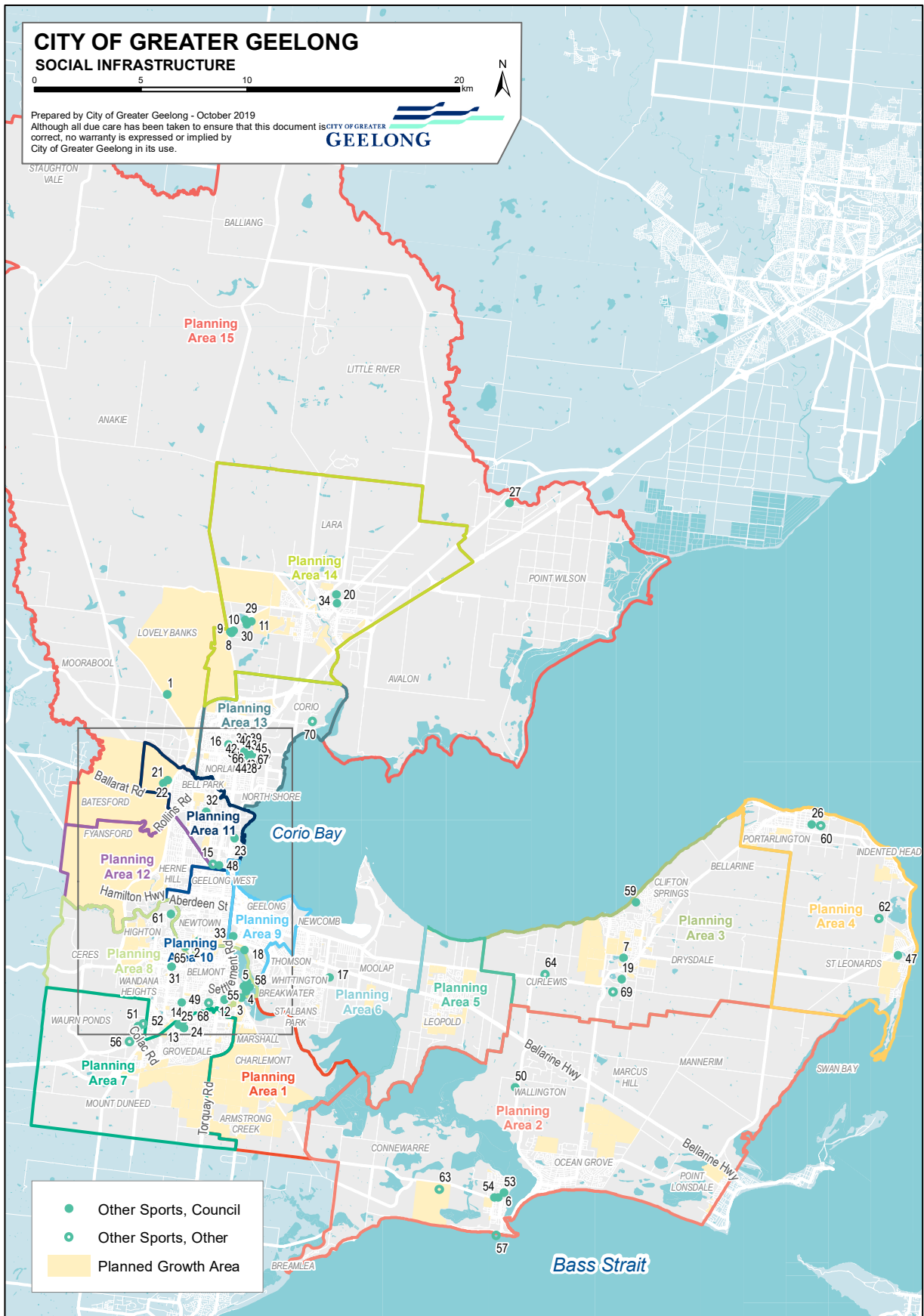
MAP 14 - OUTDOOR SPORTS FIELDS - RUGBY



MAP 15 – OTHER OUTDOOR SPORTS FACILITIES

MAP REF	OTHER SPORTS FACILITIES	AREA
1	Abe Wood Reserve	Archery area
2	Balyang Par 3 Golf Course	
3	Belmont Common	Equestrian
4	Belmont Common	Canine Area
5	Belmont Common	Rifle Range
6	Bop Bop Karrong Child and Family Centre	
7	Drysdale Recreation Reserve	Netball & Fire track
8	Elcho Park	Canine Area
9	Elcho Park	Equestrian Sand Arena
10	Elcho Park	Cross Country Equestrian
11	Elcho Park	Lara Golf Course
12	Francis St Reserve	Croquet Lawn
13	Geelong Baseball Centre	Diamond 1
14	Geelong Baseball Centre	Diamond 4
15	Geelong Regional Lawn Bowls Facility	
16	Goldsworthy Reserve	Athletic Field
17	Grinter Reserve	Equestrian
18	John Landy Athletic Field	Athletic Track
19	Lake Lorne Reserve	Equestrian
20	Lara Recreation Reserve	Baseball Diamond 1
21	Myers Reserve	Bowling Green
22	Myers Reserve	Cricket Oval 2
23	Osborne Park	Fire track
24	Geelong Baseball Centre	Diamond 2
25	Geelong Baseball Centre	Diamond 3
26	Portarlington Pony Club Reserve	Equestrian
27	Rees Reserve	Equestrian
28	Stead Park	Bowling Green
29	Elcho Golf Club	Residence
30	Elcho Golf Club	Pro Shop
31	Highton Reserve	Bowling Green
32	Hume Reserve	Bocce Court
33	Kardinia Pool	Kiosk and Amenities
34	Lara Reserve	Kiosk
35	Stead Park	Baseball Diamond 1
36	Stead Park	Baseball Diamond 2
37	Stead Park	Baseball Diamond 3
38	Stead Park	Baseball Diamond 4
39	Stead Park	Baseball Diamond 5
40	Stead Park	Baseball Diamond 6
41	Stead Park	Baseball Diamond 7
42	Stead Park	Baseball Diamond 8
43	Stead Park	Bowling Green
44	Stead Park	Dog Park
45	Stead Park	Softball Diamond
46	Stead Park	Softball Diamond
47	St Leonards Lake Reserve	Bocce Court
48	Western Oval	Velodrome
49	Ten Pin Bowling Lanes	
50	Wallington Reserve	Baseball Diamond 1
51	Deakin University (Waurin Ponds Campus)	Athletics track
52	Deakin University (Waurin Ponds Campus)	Baseball field
53	Barwon Heads Village Park	Equestrian Area
54	Barwon Heads Village Park	Lawn bowls green
55	South Barwon Reserve	Oval 6
56	Deakin University Waurin Ponds Campus - Sports Oval & Arches	Sports Oval (outer) and Archery
57	Barwon Heads Golf Course	Golf Course
58	Barwon Valley Golf Course	Golf Course
59	Clifton Springs Golf Club	Golf Club
60	Portarlington Golf Club	Golf Course
61	Queens Park Golf Club	Golf Course
62	St Leonards Golf Club	Golf Course
63	Thirteenth Beach Golf Club	Golf Course
64	Curlewis Golf Club	Golf Course
65	Stead Park	Hockey Field 1
66	Stead Park	Hockey Field 2
67	King Lloyd Reserve	Hockey Field
68	Geelong College Newtown	Hockey Field
69	St Ignatius College Drysdale	Hockey Field
70	Geelong Grammar Corio	Hockey Field

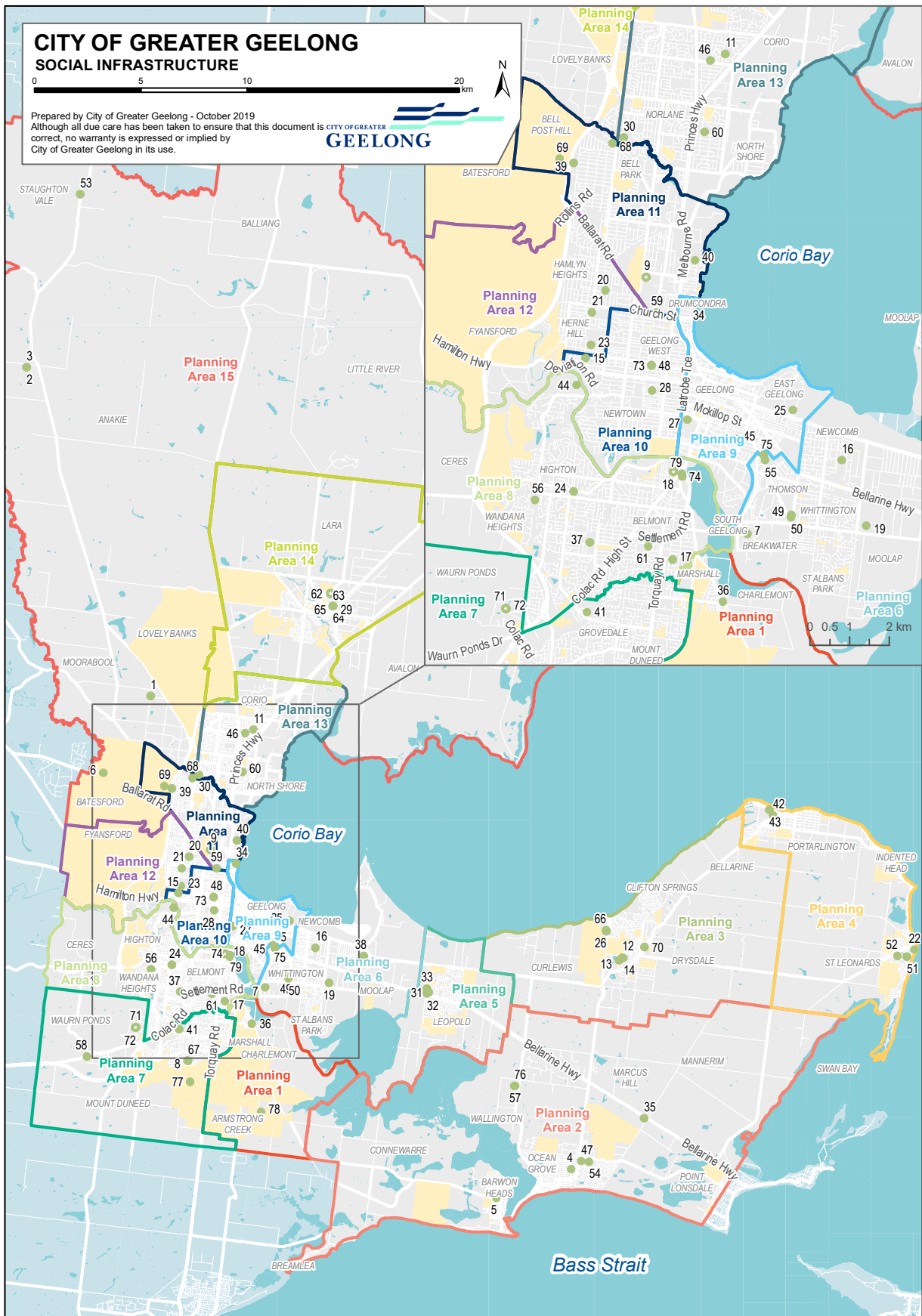
MAP 15 - OUTDOOR SPORTS FIELDS - OTHER



MAP 16 – OUTDOOR SPORTS COURTS

MAP REF	OUTDOOR SPORTS COURTS	AREA	MAP REF	OUTDOOR SPORTS COURTS	AREA
1	Abe Wood Reserve	Tennis Courts	67	Burdoo Recreation Reserve	Netball Court
2	Anakie Reserve	Tennis Courts	68	Corio Leisuretime Centre	
3	Anakie Reserve	Synthetic netball court	69	Myers Reserve	Netball Courts
4	Ocean Grove Tennis Reserve	Tennis Courts	70	Wathaurong Reserve	Tennis Court
5	Barwon Heads Village Park	Tennis Courts	71	Deakin University (Wauron Ponds Campus)	Multi-lined outdoor court
6	Batesford Reserve	Tennis Courts	72	Deakin University (Wauron Ponds Campus)	Multi-lined outdoor court
7	Breakwater Reserve	Tennis Courts	73	Doris Smith Reserve	Tennis Court
8	Burdoo Recreation Reserve	Tennis Courts	74	Barwon Valley Activity Centre	Indoor Stadium
9	Centre Court Indoor Tennis Centre		75	Thomson Reserve Tennis Courts	Tennis Courts
10	Ceres Tennis Courts		76	Wallington Reserve Netball Court	Netball Court
11	Corio Community Reserve	Tennis Courts	77	Sovereign Drive Reserve - Netball Courts	Netball Courts
12	Drysdale Recreation Reserve	Synthetic Netball Court	78	Armstrong Creek East (Central Boulevard) - Netball Courts	Netball Courts
13	Drysdale Recreation Reserve	Tennis Courts	79	Barwon Valley Activity Centre	
14	Drysdale Recreation Reserve	Netball & Fire Track			
15	Elderslie Reserve	Netball Courts			
16	Ervin Reserve	Tennis Courts			
17	Francis St Reserve	Tennis Courts			
18	Geelong Regional Tennis Centre				
19	Grinter Reserve	Netball courts			
20	Hamlyn Park	Tennis Courts			
21	Harold Hurst Reserve	Netball Courts			
22	Harvey Park	Tennis Courts			
23	Herne Hill Reserve	Netball Courts			
24	Highton Reserve	Tennis Courts			
25	Howard Glover Reserve	Tennis Courts			
26	Jetty Rd Reserve	Tennis Courts			
27	Kardinia Park	Netball Courts			
28	Kenwith Park	Tennis Court			
29	Lara Recreation Reserve	Tennis Courts			
30	Leisuretime Centre	Outdoor Netball Courts			
31	Leopold Memorial Recreation Reserve	Netball Courts (south)			
32	Leopold Memorial Recreation Reserve	Tennis Courts			
33	Leopold Memorial Recreation Reserve	Netball Courts (north)			
34	Lunan Park	Tennis Courts			
35	Marcus Hill Reserve	Tennis Courts			
36	Marshall Reserve	Tennis Court			
37	McDonald Reserve	Netball Courts			
38	Moolap Reserve	Tennis Courts			
39	Myers Reserve	Tennis Courts			
40	Osborne Park	Netball Court			
41	Pioneer Park	Tennis Courts			
42	Portarlington Recreation Reserve	Netball Courts & Fire track			
43	Portarlington Recreation Reserve	Tennis courts			
44	Queens Park	Netball Courts			
45	Richmond Oval	Netball Court			
46	Shell Oval	Netball Court			
47	Shell Rd Reserve	Netball Courts			
48	Smith Reserve	Tennis Court			
49	St Albans Reserve	Netball Courts			
50	St Albans Reserve	Tennis Courts			
51	St Leonards Lake Reserve	Netball Court			
52	St Leonards Lake Reserve	Tennis courts			
53	Stughton Vale Tennis Reserve	Tennis Court			
54	Surfside Reserve	Tennis Court			
55	Thomson Recreation Reserve	Netball courts			
56	Tim Hill Recreation Reserve	Tennis Courts			
57	Wallington Reserve	Tennis Courts			
58	Wauron Ponds Tennis Club	Tennis Courts			
59	Western Oval - Netball Courts	Netball Courts			
60	Windsor Park	Netball Courts			
61	Winter Reserve	Netball			
62	Lara Primary School	Indoor Sports Court			
63	Lara Recreation Reserve Combined Tennis / Netball Court	Combined Tennis and Netball Court			
64	Lara Recreation Reserve Combined Tennis / Netball Court	Combined Tennis and Netball Court			
65	Lara Recreation Reserve Combined Tennis / Netball Court	Combined Tennis and Netball Court			
66	Jetty Road Reserve	Tennis Court Synthetic Surface			

MAP 16 - OUTDOOR SPORTS COURTS



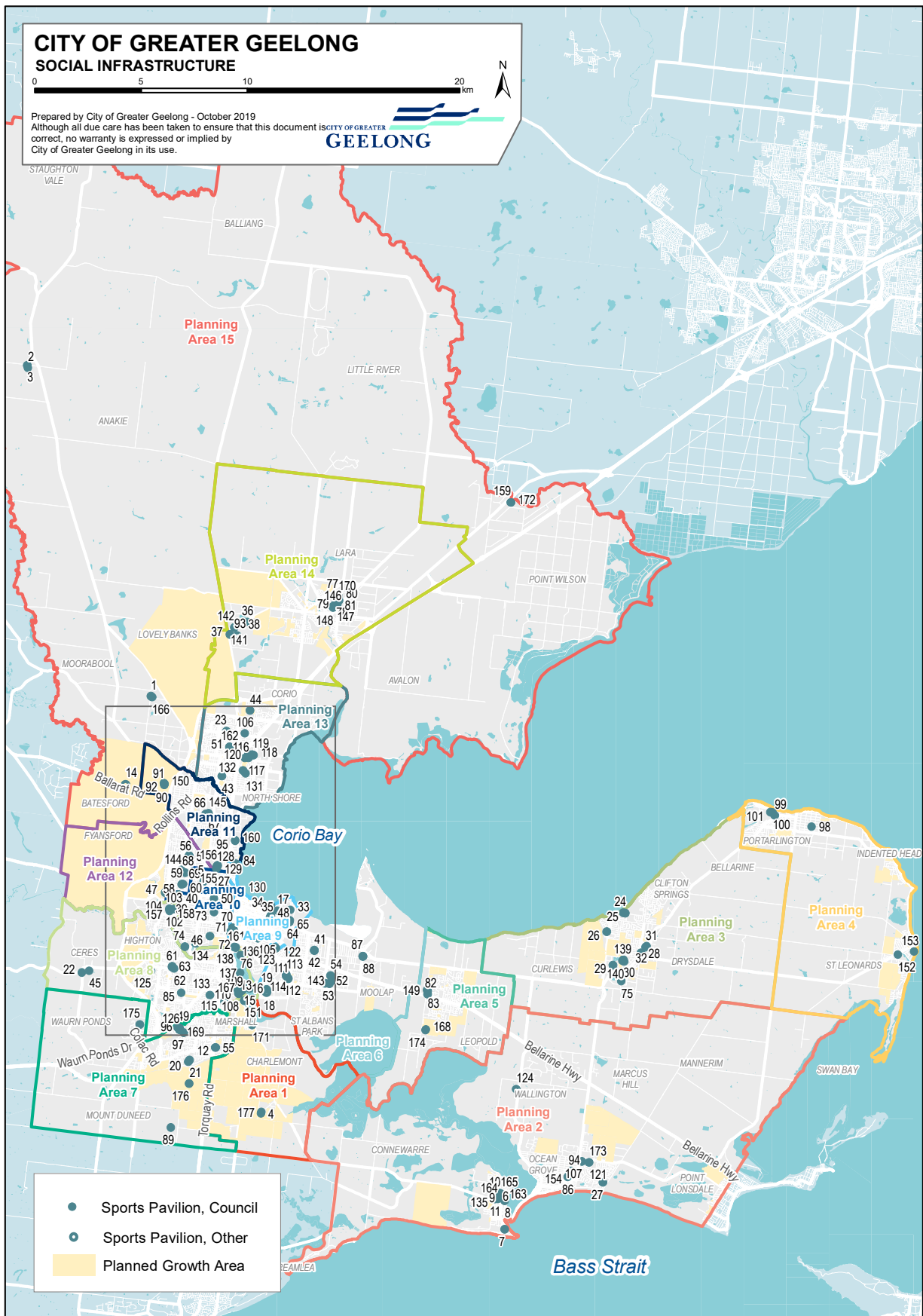
MAP 17 – SPORTS PAVILIONS

MAP REF	SPORTS PAVILION	AREA	MAP REF	SPORTS PAVILION	AREA
1	Abe Wood Reserve	Pavilion 1	66	Hume Reserve	Pavilion - Social Rooms
2	Anakie Reserve	Football Amenities/Social	67	Hume Reserve	Amenities
3	Anakie Reserve	Rooms	68	Hurst Reserve	Pavilion
4	Armstrong East Precinct NAC	Tennis pavilion	69	Hurst Reserve	Netball Kiosk
	Warralilly NAC Ovals	Pavilion	70	Regional Netball Facility - Kardinia Park	Netball Pavilion
5	Bakers Oval	Amenities & Social Room	71	Kardinia Park Umpire Pavilion	Umpires Pavilion
6	Barwon Heads Bowls Pavilion		72	Kardinia Park West Pavilion	Kardinia Park West Pavilion (St Mary's)
7	Barwon Heads Football Netball Club - Pavilion		73	Kenwith Park Tennis Club Pavilion	Tennis Pavilion
8	Barwon Heads Reserve	Scouts Pavilion	74	King Lloyd Reserve	Pavilion
9	Barwon Heads Reserve	Cricket Pavilion	75	Lake Lorne Reserve	Pony Club Pavilion
10	Barwon Heads Reserve	Pony Pavilion	76	Regional Athletics Facility - John Landy Athletics Facility	Athletics Pavilion
11	Barwon Heads Tennis Pavilion		77	Lara Baseball Pavilion	
12	Barwon Soccer Club Pavilion		78	Lara Bowling Club Pavilion	
13	Barwon Valley Golf Club	Pavilion	79	Lara Recreation Reserve	Red Cross Building
14	Bell Park Sports Club - Pavilion		80	Lara Soccer Pavilion	
15	Belmont Common	Dog Obedience Club	81	Lara Sporting Club Pavilion	
16	Belmont Common	Rifle Club Pavilion	82	Leopold Reserve	Tennis Pavilion
17	Botanic Gardens Public Conservatory		83	Leopold Reserve	Pavilion
18	Breakwater Eagles Soccer Club - White Eagle House		84	Lunan Park	Tennis Club Pavilion
19	Breakwater Reserve	Pavilion	85	McDonald Reserve	Pavilion
20	Burdoo Reserve	Tennis Pavilion	86	Memorial Park Sports Pavilion	
21	Burdoo Reserve	Pavilion	87	Moolap Reserve Tennis - Pavilion	
22	Ceres Reserve	Pavilion	88	Moolap Reserve Street Rodders Pavilion	
23	Cheshire Reserve	Marching Pavilion	89	Mt Duneed Recreation Reserve	Pony Club Pavilion
24	Clifton Springs Bowling Club		90	Myers Reserve	Football Pavilion
25	Clifton Springs Golf Club		91	Myers Reserve	Bowling Pavilion
26	Jetty Road Reserve - Pavilion	Clifton Springs Tennis Club - Pavilion	92	Myers Reserve	Soccer Pavilion
27	Collendina Recreation Reserve	Pavilion	93	Elcho Park	North Geelong Soccer Club - Private Pavilion
28	Drysdale Bowling and Croquet Club		94	Ocean Grove Tennis	Pavilion
29	Drysdale Recreation Reserve		95	Osborne Park	Pavilion
30	Drysdale Recreation Reserve	Cricket Pavilion	96	Pioneer Park	Tennis Pavilion
31	Drysdale Sporting Precinct	Netball/Fire Pavilion	97	Pioneer Park Baseball Pavilion	Pioneer Park Baseball Pavilion
32	Drysdale Tennis Pavilion		98	Portarlington Pony Club (Shed)	Pavilion
33	East Geelong Golf Club		99	Portarlington Recreation Reserve	Netball/Fire Pavilion
34	Eastern Beach Reserve	Kiosk	100	Portarlington Recreation Reserve	Pavilion
35	Eastern Park	Lawn Bowls Club	101	Portarlington Recreation Reserve	Tennis Pavilion
36	Elcho Park	Golf Club	102	Queens Park	Pavilion
37	Elcho Reserve	Corio Pony Club	103	Queens Park	Netball Pavilion
38	Elcho Reserve	Canine Club Rooms	104	Queens Park	Football Club Kiosk
39	Elderslie Reserve	Pavilion	105	Richmond Oval	Pavilion
40	Elderslie Reserve	Newtown Netball	106	Shell Reserve	Pavilion
41	Ervin Reserve	Changerooms	107	Shell Road Reserve	Sports Pavilion
42	Ervin Reserve	Ron Hayes Pavilion	108	South Barwon Recreation Reserve	Cricket Pavilion 1
43	Evans Reserve	Ross Pavilion (Tennis)	109	South Barwon Recreation Reserve	Cricket Pavilion 2
44	Flinders Peak	Amenities Pavilion	110	South Barwon Recreation Reserve	Cricket Pavilion 3
45	Frank Mann Reserve	Sports Pavilion	111	St Albans Reserve	Tennis Pavilion
46	Frier Reserve	Tennis Club	112	St Albans Reserve	Netball Pavilion
47	Geelong Cement Bowls Club	Pavilion	113	St Albans Reserve	Pavilion
48	Geelong Eastern Park Croquet Club		114	St Albans Reserve	Football Cricket Pavilion
49	Geelong Regional Baseball Centre	Main Pavilion	115	St Stephen's Tennis/Croquet Pavilion	
50	Geelong West Tennis Pavilion		116	Stead Park	Norlane Bowls Club Pavilion
51	Goldsworthy Reserve - Change Facility	Change Facility	117	Stead Park	Darts Pavilion
52	Grinter Reserve	Netball Pavilion	118	Stead Park	Soccer Pavilion
53	Grinter Reserve	Pavilion	119	Stead Park	Hockey Pavilion
54	Grinter Reserve	Pony Club	120	Stead Park	Softball Pavilion
55	Grovedale Reserve Sports Pavilion	Pavilion	121	Surfside Tennis Pavilion	
56	Hamlyn Park	Tennis Clubroom	122	Thomson Reserve	Change Rooms
57	Hamlyn Park	Alex Rizun Pavilion	123	Thomson Reserve	Pavilion
58	Herne Hill Reserve	St Peters Cricket Pavilion	124	Wallington Reserve	Sports Pavilion
59	Herne Hill Reserve	Football and Netball Club - Pavilion			
60	Herne Hill Reserve	St Josephs Social & Amenities			
61	Highton Bowling	Pavilion			
62	Highton Reserve	Football / Cricket Pavilion			
63	Highton Tennis Club	Tennis Pavilion			
64	Howard Glover Reserve	Tennis Pavilion			
65	Howard Glover Reserve	Soccer Pavilion			

MAP 17 – SPORTS PAVILIONS, CONT.

MAP REF	OUTDOOR SPORTS COURTS	AREA
144	Hamlyn Reserve	Pavilion (Commercial)
155	Hume Reserve	Soccer Pavilion - Clubrooms
146	Lara Reserve	Tennis Club Pavilion
147	Lara Reserve	Sporting Pavilion
148	Lara Reserve	Grandstand and Change
149	Leopold Reserve	Netball Pavilion
150	Myers Reserve	Tennis Pavilion
151	South Barwon Reserve	Pony Club Pavilion
152	St Leonards Reserve	Football and Cricket Pavilion
153	St Leonards Tennis	Pavilion
154	Ocean Grove Hall	Football Pavilion
155	western Oval	Kiosk
156	Western Oval	Canteen
157	Queens Park	Golf Club and Kiosk
158	Queens Park	Sports Pavilion
159	Rees Reserve	Storeroom, Office and Kiosk
160	Osborne Park	Kiosk
161	Corio Bay Rowing Club	
162	Goldsworthy Reserve	Pavilion
163	Barwon Heads Village Park	Sports Pavilion
164	Barwon Heads Village Park	Tennis Pavilion
165	Barwon Heads Village Park	Equestrian pavilion
166	Abe Wood Reserve	Pavilion 2
167	South Barwon Recreation Reserve	Pavilion 4
168	Estuary Reserve	temporary change rooms
169	Geelong Baseball Indoor Training Facility	Indoor Batting Facility
170	Lara Reserve	Soccer Pavilion
171	Marshall Reserve Tennis Pavilion (Shelter)	Tennis Shelter
172	Rees Reserve	Equestrian Pavilion
173	Shell Road Reserve Tennis Pavilion	Tennis Pavilion
174	Estuary Sports Amenities (Portable)	Portable Amenities
175	Deakin University Waurin Ponds Campus - Sports Pavilion	Sports Pavilion
176	Sovereign Drive Reserve - Change Facilities (Portable)	
177	Armstrong Creek East Sports Pavilion (Central Boulevard)	Pavilion

MAP 17 - SPORTS PAVILIONS



OUTDOOR SPORTS FIELDS

Cricket Ovals (competition), Football Ovals (competition), Hockey Pitches (competition), Rugby Pitches (competition), Soccer Pitches (competition).



SERVICE	CURRENT PROVISION STANDARDS	TODAY	BENCHMARK	DIFFERENCE
Cricket Oval	1 Field per 4,000 Persons (all ages)	91	64	27
Football Oval	1 Field per 5,000 Persons (all ages)	84	51	33
Soccer Pitch	1 Field per 5,000 Persons (all ages)	36	51	- 15
Rugby Pitch	1 Field per 100,000 Persons (all ages)	4	3	1
Hockey Pitch	1 Field per 100,000 Persons (all ages)	7	3	4
Baseball Diamond	1 Diamond per 40,000 Persons (all ages)	17	6	11

Data Notes:

OUTDOOR SPORT & RECREATION

DISTRIBUTION

EQUITY

 GOOD DISTRIBUTION OF SITES AND ACCESS TO OUTDOOR SPORT AND RECREATION SPACES
 HIGHER CONCENTRATION IN SUBURBAN AREAS. POOR PROVISION IN CENTRAL GEELONG.

CONDITION

 70% CONDITION AUDITS
 APPROX. 49% COMPLETED

AVERAGE SCORE: 2.0 - GOOD
RANGE: 1.0 - VERY GOOD TO 4.7 - VERY POOR

TRAVEL ACCESSIBILITY

ACCESSIBILITY

 ON AVERAGE 78% OF DWELLINGS ARE WITHIN A 20-MINUTE WALK TO ONE OR MORE PLACE, SPACE OR SERVICE

100% OR MORE EXCELLENT WALKABILITY
Meaning that most residents live within a 20-minute walk to more than one option

50% - 100% GOOD WALKABILITY
Meaning that more than half of residents live within a 20-minute walk

50% OR LESS LIMITED WALKABILITY
Meaning that less than half of residents live within a 20-minute walk

NOTE: Comprehensive multi-mode travel accessibility assessments are in development

USAGE / OCCUPANCY

SUSTAINABILITY

 MANAGEMENT / SERVICE DELIVERY
 97% COGG

The City of Greater Geelong manages 97% of all outdoor sport and recreation spaces.

FELT NEED

- Focus on building the capacity in the network.
- Need to consider the conversion and adaptability of the network to provide for more diverse users, activities and sports.
- There is a shortfall of functional spaces for soccer and the opportunity to re-grade some traditional sportsgrounds to accommodate increased soccer use.
- The provision of sports lighting should be considered as a way of building capacity in the network.

OUTDOOR SPORTS COURTS AND TRACKS

Netball Courts (outdoor competition), Tennis courts (outdoor competition), Multipurpose courts and Athletics tracks.

BUILDINGS & OWNERSHIP



SERVICE	CURRENT PROVISION STANDARDS	TODAY	BENCHMARK	DIFFERENCE
Netball Court (outdoor)	1 Court per 7,070 Persons (all ages)	66	36	30
Tennis Court (outdoor)	1 Court per 3,000 Persons (all ages)	201	86	115
Multipurpose Court (outdoor)	No Parameters	2	N/A	N/A
Athletics Track	1 Facility per 100,000 Persons (all ages)	3	2.6	0.4

Data Notes:

OUTDOOR SPORT & RECREATION

DISTRIBUTION



CONDITION



TRAVEL ACCESSIBILITY



USAGE / OCCUPANCY



FELT NEED

Renewal programs need to consider supporting infrastructure such as nets, winders, poles and fences.
Greater clarity is required around the level of service and replacement of courts with regards to synthetic surfaces.

SPORT AND RECREATION PAVILIONS

Sports pavilions (shared use), Sports change room(s), Sports clubroom(s), Sports pavilion and clubroom(s), Sports shelters, and Scout / Guide Halls.

BUILDINGS & OWNERSHIP



176 96% COGG
SPORTS PAVILION AND CLUBROOMS



15 47% COGG
SCOUTS / GUIDE HALLS

SERVICE	CURRENT PROVISION STANDARDS	TODAY	BENCHMARK	DIFFERENCE
Sports Pavilion and Change Rooms	No parameters available.	177	-	-
Scout / Guide Hall	No parameters available.	15	-	-

Data Notes:

OUTDOOR SPORT & RECREATION

DISTRIBUTION

EQUITY



GOOD DISTRIBUTION OF SITES AND ACCESS TO PAVILIONS



HIGHER CONCENTRATION IN CENTRAL GEELONG

CONDITION



72 41% COMPLETED
CONDITION AUDITS



AVERAGE SCORE: 2.23 - GOOD
RANGE: 1.0 - VERY GOOD TO 5.0 - VERY POOR

TRAVEL ACCESSIBILITY

ACCESSIBILITY



ON AVERAGE 97% OF DWELLINGS

ARE WITHIN A 20-MINUTE WALK TO ONE OR MORE PLACE, SPACE OR SERVICE

100% OR MORE EXCELLENT WALKABILITY
Meaning that most residents live within a 20-minute walk to more than one option

50% - 100% GOOD WALKABILITY
Meaning that more than half of residents live within a 20-minute walk

50% OR LESS LIMITED WALKABILITY
Meaning that less than half of residents live within a 20-minute walk

NOTE: Comprehensive multi-mode travel accessibility assessments are in development

USAGE / OCCUPANCY

SUSTAINABILITY



MANAGEMENT / SERVICE DELIVERY

96% COGG

The City of Greater Geelong manages 96% of all sports and recreation pavilions.

FELT NEED



There is a need to ensure facilities are fit-for-purpose and provide access for all, including gender neutral / unisex change facilities.

Some pavilions are in poor condition and it will be important to understand the quality, functionality and use of sports and recreation pavilions across the municipality.

OUTDOOR SPORT AND RECREATION

INDICATES A METRIC THAT IS OF SIGNIFICANCE TO ASSESSING NEED

DESCRIPTION OF SMALL AREAS	BY PLANNING AREA														
	1	2	3	4	5	6	7	8	9	10	11	12	13	14	15
KNOWN PROVISION	1	2	3	4	5	6	7	8	9	10	11	12	13	14	15
Football Field	2	8	4	4	4	8	6	18	5	4	5	7	3	4	2
Cricket Field	2	9	4	4	4	8	6	18	7	6	5	6	5	5	2
Soccer Pitch	0	3	2	1	1	0	5	1	3	0	6	0	6	4	0
Rugby Pitch	0	0	0	0	0	0	0	1	0	0	0	0	3	0	0
Hockey Pitch	0	0	1	0	0	0	0	0	0	3	0	0	3	0	0
Baseball / Softball Diamond	0	1	0	0	0	0	5	0	0	0	1	0	9	1	0
Athletics Track	0	0	0	0	0	0	1	0	1	0	0	0	1	0	0
Tennis Court (outdoor)	1	21	17	9	9	33	20	47	6	6	5	5	4	9	9
Netball Court (outdoor)	2	5	5	3	4	2	5	5	11	2	5	8	7	1	1
Sports Pavilion	3	18	11	6	5	16	12	20	16	11	14	9	13	15	7
PROVISION GAP	1	2	3	4	5	6	7	8	9	10	11	12	13	14	15
Football Field	-0.2	3.1	0.7	2.4	1.3	4.3	1.4	10.4	2.6	-0.2	2	4.9	-2	0.5	1
Cricket Field	-0.8	3	0	2	0.7	3.5	0.1	8.5	4.1	0.8	1.2	3.3	-1.2	0.6	0.8
Soccer Pitch	-2.2	-1.9	-1.3	-0.6	-1.7	-3.7	0.4	-6.6	0.6	-4.2	3	-2.1	1	0.5	-1
Rugby Pitch	-0.1	-0.2	-0.2	0	-0.1	-0.1	-0.3	0.7	-0.1	-0.2	-0.2	-0.1	2.7	-0.2	0
Hockey Pitch	-0.1	-0.2	0.8	0	-0.1	-0.1	-0.3	-0.3	-0.1	2.9	-0.2	-0.1	2.7	-0.2	0
Baseball / Softball Diamond	-0.3	0.4	-0.4	-0.2	-0.3	-0.5	4.4	-1	-0.3	-0.6	0.7	-0.3	8.4	0.6	-0.1
Athletics Track	-0.1	-0.2	-0.2	0	-0.1	-0.1	0.7	-0.3	0.9	-0.2	-0.2	-0.1	0.7	-0.2	0
Tennis Court	-2.7	12.9	11.6	6.4	4.6	27.1	12.3	34.4	2.1	-1	0	1.5	-4.3	3.1	7.5
Netball Court	1	2	3	2	2	-1	2	0	9	-1	3	7	4	-2	0
Sports Pavilion	-	-	-	-	-	-	-	-	-	-	-	-	-	-	-
HEALTH INDICATORS	1	2	3	4	5	6	7	8	9	10	11	12	13	14	15
Self-rate health (%) – rated their health as fair or poor	9.5%	5.2%	8.8%	15.3%	11.4%	18.4%	11.9%	7.3%	10.1%	11.5%	6.6%	6.3%	21.2%	14.0%	9.5%
Physical activity (%) – Classified as sedentary	10.4%	5.1%	11.9%	8.3%	9.1%	14.1%	14.3%	6.7%	2.8%	8.0%	8.8%	4.1%	22.6%	13.1%	11.7%
Overweight (%) – Based on Body Mass Index	50.6%	29.4%	35.1%	31.6%	35.8%	47.0%	34.7%	34.4%	39.1%	37.4%	30.9%	28.2%	25.9%	45.4%	35.9%
Obese (%) – Based on Body Mass Index	15.4%	21.6%	18.9%	31.6%	26.6%	29.5%	19.5%	10.9%	12.9%	12.5%	30.9%	23.9%	28.4%	31.1%	19.8%
Psychological distress (%) - High / Very high distress rates	9.1%	6.8%	7.1%	12.0%	13.8%	12.0%	10.1%	10.6%	3.7%	8.7%	6.5%	4.1%	21.3%	8.5%	11.0%
Life satisfaction (%) – Rated their life satisfaction as high or very high.	82.6%	95.8%	84.8%	90.4%	86.8%	83.2%	85.7%	87.0%	88.6%	88.6%	80.3%	95.1%	68.1%	88.9%	84.9%

OUTDOOR SPORT & RECREATION

OUTDOOR SPORT AND RECREATION



IN THE NEXT 3 YEARS WE WILL FOCUS ON:

BUILDING CAPACITY IN THE NETWORK

STRATEGIC FOCUS AREAS



BUILDING CAPACITY IN THE NETWORK

Focus on building capacity and capability across the existing network.



MAINTENANCE AND RENEWAL PROGRAMS

Align maintenance programs and budgets to meet agreed service levels.



CONTEMPORISE PLANNING, DATA AND SYSTEMS

Contemporise and undertake holistic planning and policy development.



MAKE ROOM FOR NEW

Ensure adequate resource alignment to enable and service growth and new projects.

DIRECTIONS

REF	DIRECTION	POLICY / RESPONSE ALIGNMENT
1.	<p>Focus on infrastructure projects that build the quality, functionality and carrying capacity of the existing network. Maximise use of existing facilities by initiating and supporting upgrade projects that focus on sports lighting, gender neutral (i.e. Female Friendly) change facilities, sports surface conversion and supporting infrastructure such as supplementary training spaces.</p> <p>Focus on strategic partnerships to build capacity and capability across the network to deliver on infrastructure needs.</p> <p>Plan and develop legislated and/or contractual obligations in growth areas in a timely and efficient manner. A place-based approach is required for development in growth areas to ensure that the timely sequencing of delivery can be achieved to support the intended use.</p>	<p>In response to the need to adapt and increase the carrying capacity of the network.</p> <p>In response to the immediate need for gender neutral, inclusive and welcoming facilities.</p> <p>In response to the need to build capacity throughout the network.</p>
2.	<p>Develop a robust understanding of network performance. Conduct a fit-for-purpose audit of the network and investigate usage and occupancy, in both the public, private and education services, to help determine need and demand across the City.</p> <p>Invest in developing contemporary systems, data and insights and mature our current provision and performance reporting.</p> <p>Continue to enhance the relationship between peak governing bodies, government and community partners in the planning and provision of facilities. Align planning at local, municipal, regional, state and federal levels to ensure that all levels of the planning cycle are working collaboratively to deliver benefits to the community.</p>	<p>In response to the need for robust data and insights to understand supply versus demand and inform future infrastructure investment and service planning.</p> <p>In response to the role of the City as a host of many regional level facilities and need to update regional planning.</p> <p>In response to the need to building capacity and sustainability in the network, recommend a review of the Fair Play Strategy in line with a review of sports lighting provision across the City.</p>
3.	<p>Contemporise and undertake holistic planning and policy development. Focus on data, monitoring and reporting.</p> <p>Include planning for people and place (i.e. Gender-neutral provision, positive ageing and access for all abilities).</p>	<p>In response to the need to diversify, contemporise and holistically plan for future sport and recreation design, provision and management.</p>
4.	<p>Develop an Integrated Asset Management Plan and ensure planning, development and renewal budget programs are commensurate with the agreed service levels and outcomes for the network.</p> <p>Review existing renewal programs and budgets against agreed service levels.</p>	<p>In response to the need for equity in investment across the network (in both place and activity).</p> <p>In response to the need for better aligned and integrated facility planning, development and investment programs.</p>
5.	<p>Initiate and support club and community development activities that respond to changing clubs needs with a focus on supporting financial sustainability, club capacity development and strategic planning.</p> <p>Initiate and support the activation of new sites and the establishment of new clubs as well as the support and activation of areas in need.</p>	<p>In response to the need for sports development, support and activation to maximise the use and sustainability of Council's sport and recreation facilities.</p> <p>In response to the need for equity and the need to help support and mobilise groups who need it the most.</p>

IDENTIFIED PROJECTS

SUMMARY OF INFRASTRUCTURE DEVELOPMENT OVER THE NEXT 3 YEARS (2020-23)

OUTDOOR SPORT AND RECREATION

HARD INFRASTRUCTURE			SOFT INFRASTRUCTURE	
NEW	RENEW	MAINTENANCE	PLANNING	SERVICES / PEOPLE
<p>New:</p> <p>Kingston / Oakdene, Ocean Grove recreation reserve - 2nd Sporting oval and pavilion.</p> <p>Sovereign Drive, Armstrong Creek - 2nd Sporting Oval.</p> <p>Estuary Reserve, Leopold - Develop Modular Pavilion.</p> <p>Lara Sports Precinct – Developments as identified in the Lara Master Plan.</p> <p>Drysdale Sporting Precinct Stage 2 - Pavilion and Ovals</p> <p>Hume Reserve, Bell Park Pavilion Replacement and gender-neutral change facilities.</p> <p>West Oval Pavilion Redevelopment.</p> <p>Armstrong Creek. New regional sports venue – 10ha land purchase.</p> <p>Sports Lights -</p> <ul style="list-style-type: none"> Lara Sports Precinct (soccer) St Leonards Lake Oval Windsor Park Oval 	<p>Minor refurbishment:</p> <p>As required.</p> <p>Major Refurbishment:</p> <p>Sports Lights:</p> <ul style="list-style-type: none"> Grinter Reserve Oval 1 Lara Oval 1 Queens Park Oval 1 Portarlington Oval 1 St Albans Oval 1 Portarlington Netball Courts <p>Gender Neutral Change Facilities:</p> <p>Grinter Reserve Pavilion Upgrade to include gender neutral change facilities.</p> <p>Burdoo Reserve, Grovedale – Complete Stage 2 Pavilion Upgrade (funded).</p> <p>Thomson Reserve, Thomson – Provide gender neutral change facilities (partial funded)</p> <p>Wallington Reserve, Wallington – Upgrade pavilion and change facilities to be gender neutral.</p> <p>Elderslie Reserve, Newtown – Upgrade change facilities to be gender neutral.</p> <p>Hamlyn Park Reserve, Bell Park – Upgrade change facilities to be gender neutral.</p> <p>Shell Road, Corio - Change Facilities Upgrade - Gender neutral change facilities.</p> <p>North Geelong Football Club Upgrade – Complete Stage 2 gender-neutral change facilities.</p> <p>Other:</p> <p>Estuary Reserve Field Irrigation.</p> <p>Portarlington Netball Court Upgrade.</p> <p>Lake Lorne Drysdale Pony Club – Toilet Upgrade</p>	<p>Based on Asset Management Plan – develop annual maintenance program(s).</p> <p>Implement Planning, development and upgrade programs:</p> <ul style="list-style-type: none"> Infrastructure Design Program Active Open Space Reserve Upgrade Program Passive Open Space Reserve Upgrade Program Play Space Upgrade Program Hard Surfaces Upgrade Program Cycling and Trail Upgrade Program 	<p>Conduct a complete condition and fit-for-purpose audit of all outdoor and indoor sport and recreation assets.</p> <p>Develop Asset Management Plan in line with asset condition, fit-for-purpose and criticality audits.</p> <p>Develop City of Greater Geelong Sports and Recreation Needs Study (including regional and minor sports).</p> <p>Complete the planned review of the Fair Play Strategy (2017).</p> <p>Complete a sports development plan for the northern areas of the municipality, to include needs, development and activation plan to ensure the long-term sustainability of sport in the north.</p> <p>Develop a business case for the management, use and future upgrade of Howard Glover Reserve Pavilion.</p> <p>Develop a Master Plan for the development of a new multipurpose community and sports hub at St Leonards Lake Reserve, St Leonards.</p> <p>Barwon Heads Village Park Master Plan including Barwon Heads Bowling Club - Pavilion Upgrade Concept Design.</p> <p>Investigate the potential development of change facilities and/or irrigation at Ervin Reserve Newcomb, Frier Reserve, Newtown and Estuary Reserve (Leopold).</p> <p>Investigate the potential to provide football / cricket oval and tennis courts at Flinders Peak (Hendy Street Reserve), Corio.</p> <p>Investigate the potential conversion of South Barwon Reserve to include provision for soccer / multi-use.</p>	<p>Work in collaboration with private, not-for-profit and education providers to ensure reasonable access to outdoor sport and recreation spaces and programs across the municipality.</p> <p>Collaborate with peak governing bodies in all facility planning.</p> <p>Review MOU with Leisure Networks to provide club with training opportunities.</p> <p>Initiate a program to ensure clubs and community groups can easily navigate and access available funding opportunities.</p> <p>Investigate the human resource requirements to support sports development with a focus on the northern suburbs and key growth areas.</p> <p>Continue to apply for funding through the government and peak body funding opportunities.</p> <p>Implement Smart City Technology assessing existing service performance.</p> <p>Develop online booking system for community assets.</p> <p>Develop an Annual 'State of Play' Performance Report.</p>

CITY OF GREATER GEELONG

PO Box 104

Geelong VIC 3220

P: 5272 5272

E: contactus@geelongcity.vic.gov.au

www.geelongaustralia.com.au

CUSTOMER SERVICE CENTRE

100 Brougham Street

Geelong VIC 3220

8.00am – 5.00pm

© City of Greater Geelong 2018

LATEST NEWS:

 [@CityofGreaterGeelong](#)

 [@GreaterGeelong](#)

 [@CityofGreaterGeelong](#)

 [CityofGreaterGeelong](#)