

Social Story



A visit to

RIPPLESIDE INCLUSIVE PLAYSPACE | A LIVVI'S PLACE

November 2025 V1



Thank you for choosing to use a Social Story written for Rippleside Inclusive Playspace, A Livvi's Place.

For your Social Story to be successful, we recommend you follow these guidelines:

- Read Social Story often and preferably two weeks in advance of visit.
- Social Story to be read and shared in an environment free of distractions.
- Be calm, comfortable and honest when reading a Social Story.
- Help the participant comprehend key points and consistently monitor for level of understanding.
- Once the visit has taken place, revisit the Social Story to celebrate your success.

Acknowledgement

You are on Wadawurrung Country. The City of Greater Geelong pays respects to Wadawurrung Traditional Owners and to all Aboriginal and Torres Strait Islander People living across Greater Geelong today.

The City of Greater Geelong acknowledges the support and assistance provided by [Access Ability Australia](#) in helping to prepare this Social Story.

We express our sincere appreciation to Access Ability Australia for its pivotal role in assisting Council's commitment to accessibility and inclusion. Access Ability Australia's expertise and support has played a vital role in ensuring that Rippleside Playspace, a Livvi's Place is welcoming to all individuals in our community.

I am going to visit Rippleside Inclusive Playspace, A Livvi's Place.



When we arrive, we will enter through a gate.

I might see and hear children playing.

I might see and hear birds.



There are toilets.

My trusted adult can show me where the toilets are.



There is a communication board.

It is a big board with symbols.

The communication board helps people share what they want to say.

Users can point to the symbols to show what they need or how they feel.

The board helps everybody to play and be understood.



Rippleside Inclusive Playspace has a lot of equipment to play on.



Other people might be lining up in front of me to use the play equipment.

I will try to wait my turn.

Waiting my turn is the fair thing to do.



Before I use the slides, I will try to wait until the person in front of me has finished their turn and moved away.

I will stand next to the sides of the swings and flying fox while waiting my turn.

This is important to keep me safe.



Rippleside Inclusive Playspace has a big play structure.

It has lots of fun things to play with.

I might climb a net to explore different play equipment.

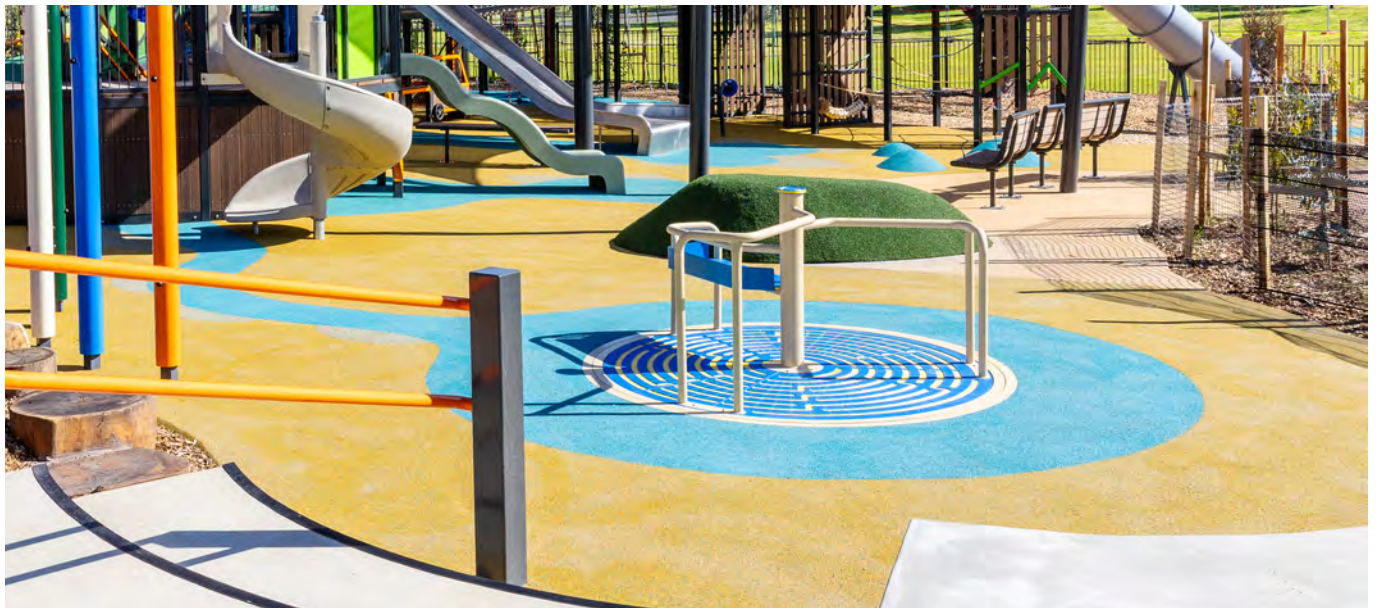
I might sit in the car cubby and ring the bell.



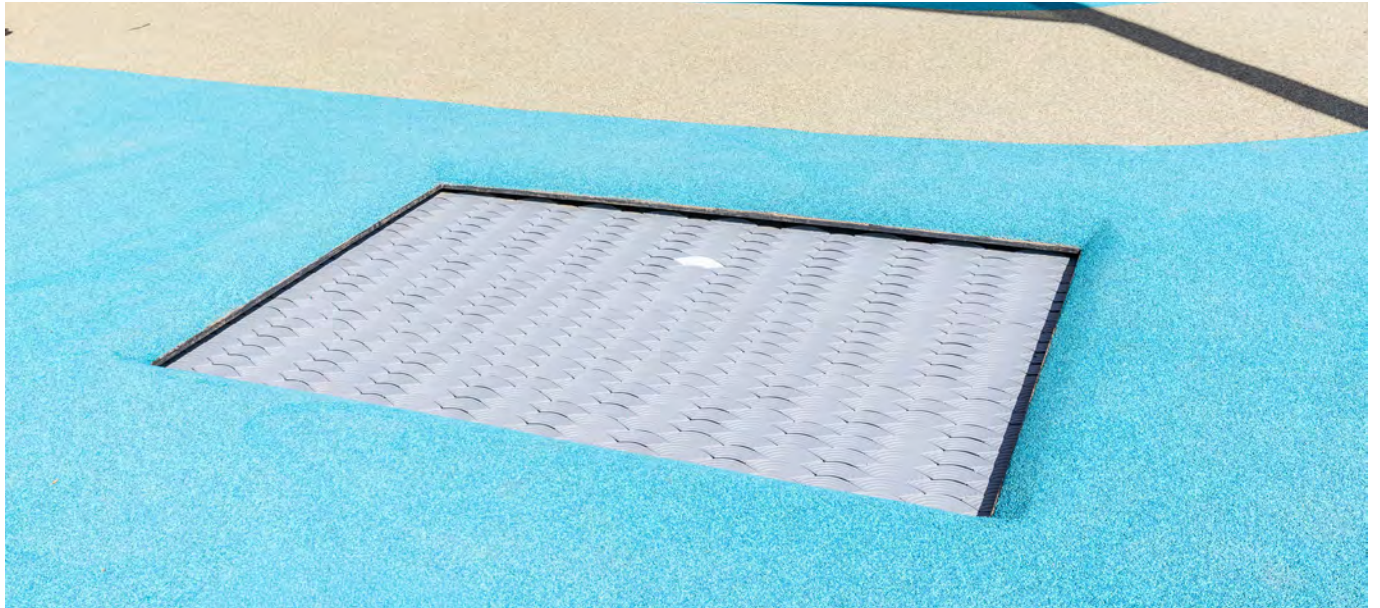
There is a see saw.

There is a carousel.

People who use wheelchairs can play on the see saw and carousel too.



There is an inground trampoline.



There is a hammock swing.



There is a sandpit with tables where everyone can play with sand, including people who use wheelchairs.

There is a pole with a small communication board.

People can point to the symbols on the board to show what they want to do in the sandpit.



There is a water play area with a table and water pump.

I can move the pieces on the table to change how the water flows.

I can press a button on the water pump to make the water come out.

There is a pole with a small communication board.

People can point to the symbols on the board to show what they want to do in the water play area.



There is a sensory play area.
A sensory play area has things
that feel, look and sound
different.

There is a mushroom wall in
the sensory play area with
lots of things to play with.

It is fun and helps people
learn.



There are grassed areas and barbecue shelters at Rippleside Inclusive Playspace.

These are nice areas to relax and have something to eat or drink.



Sometimes, other people may be making noise.

This means they are having fun, which is okay.

I can wear my headphones or ear buds to help with the noise.

I might go to the quiet area or grassed area for some quiet time.



The playspace is a fun place where I can play with others.



Contact Us

Rippleside Inclusive Playspace, A Livvi's Place
101-123 Melbourne Road
Rippleside, VIC, 3215

Phone 03 5272 5272 (City of Greater Geelong)

contactus@geelongcity.vic.gov.au

[Website](#)

