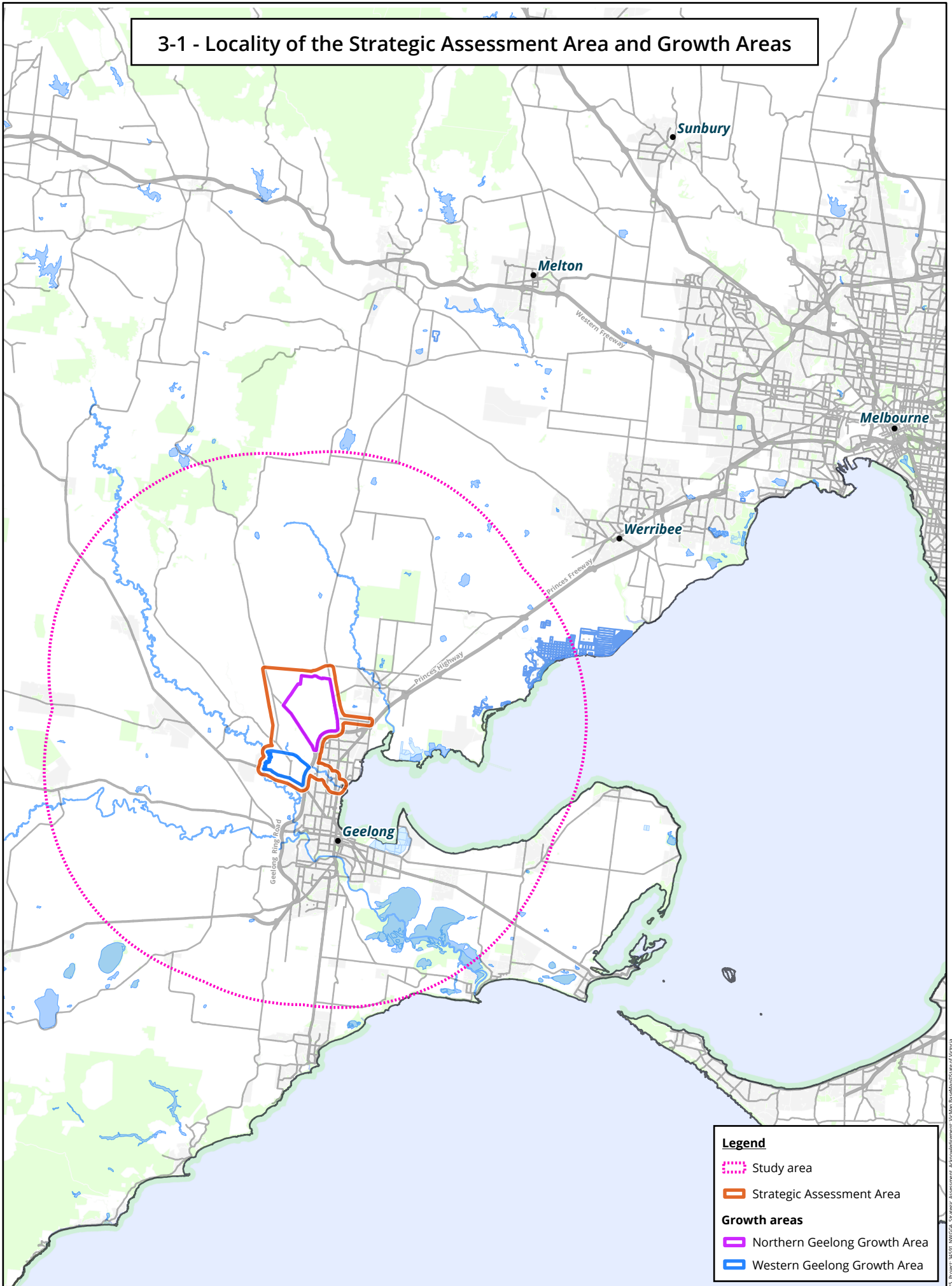


3-1 - Locality of the Strategic Assessment Area and Growth Areas

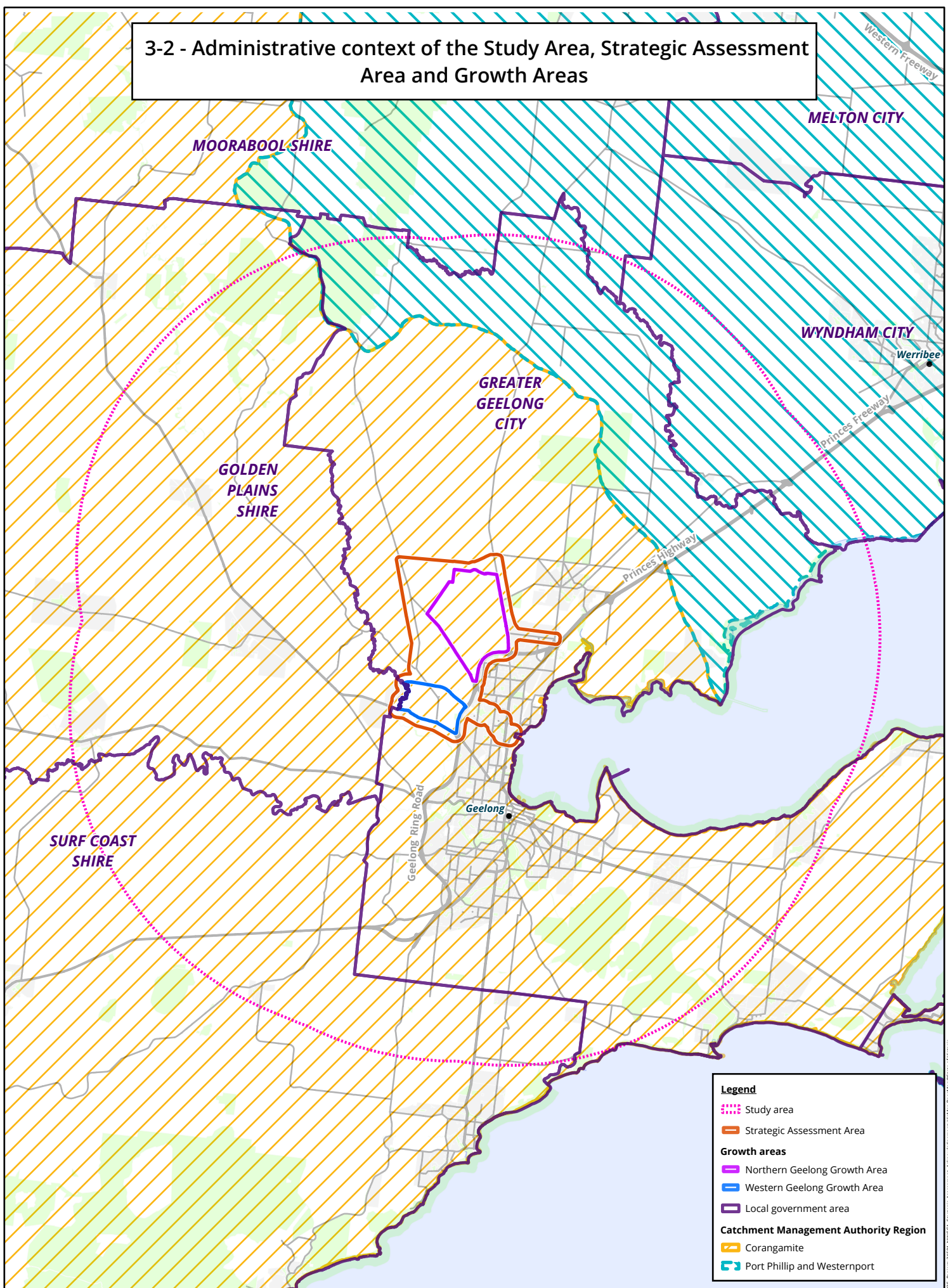


Legend

- Study area
- Strategic Assessment Area
- Growth areas**
- Northern Geelong Growth Area
- Western Geelong Growth Area

Water: 3091, Date: 18 March 2025, Project: 24571, J:\WGCA_24\Strategic_Assessment_Acknowledgement\WGCA_BasemapState of Victoria

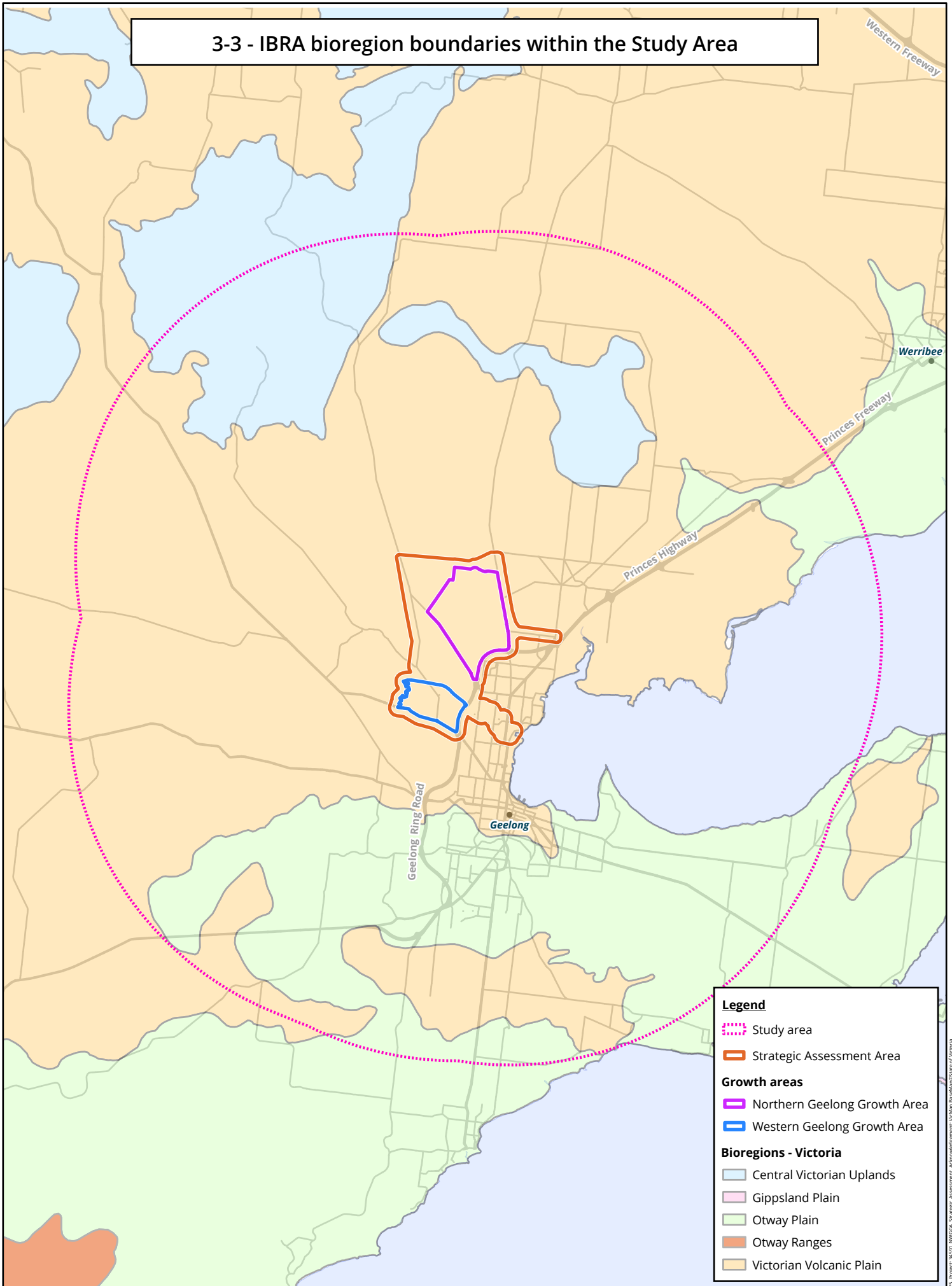
3-2 - Administrative context of the Study Area, Strategic Assessment Area and Growth Areas



Legend

- ⋯ Study area
- Strategic Assessment Area
- Growth areas**
- Northern Geelong Growth Area
- Western Geelong Growth Area
- Local government area
- Catchment Management Authority Region**
- Corangamite
- Port Phillip and Westernport

3-3 - IBRA bioregion boundaries within the Study Area



Legend

- ⋯ Study area
- ▭ Strategic Assessment Area

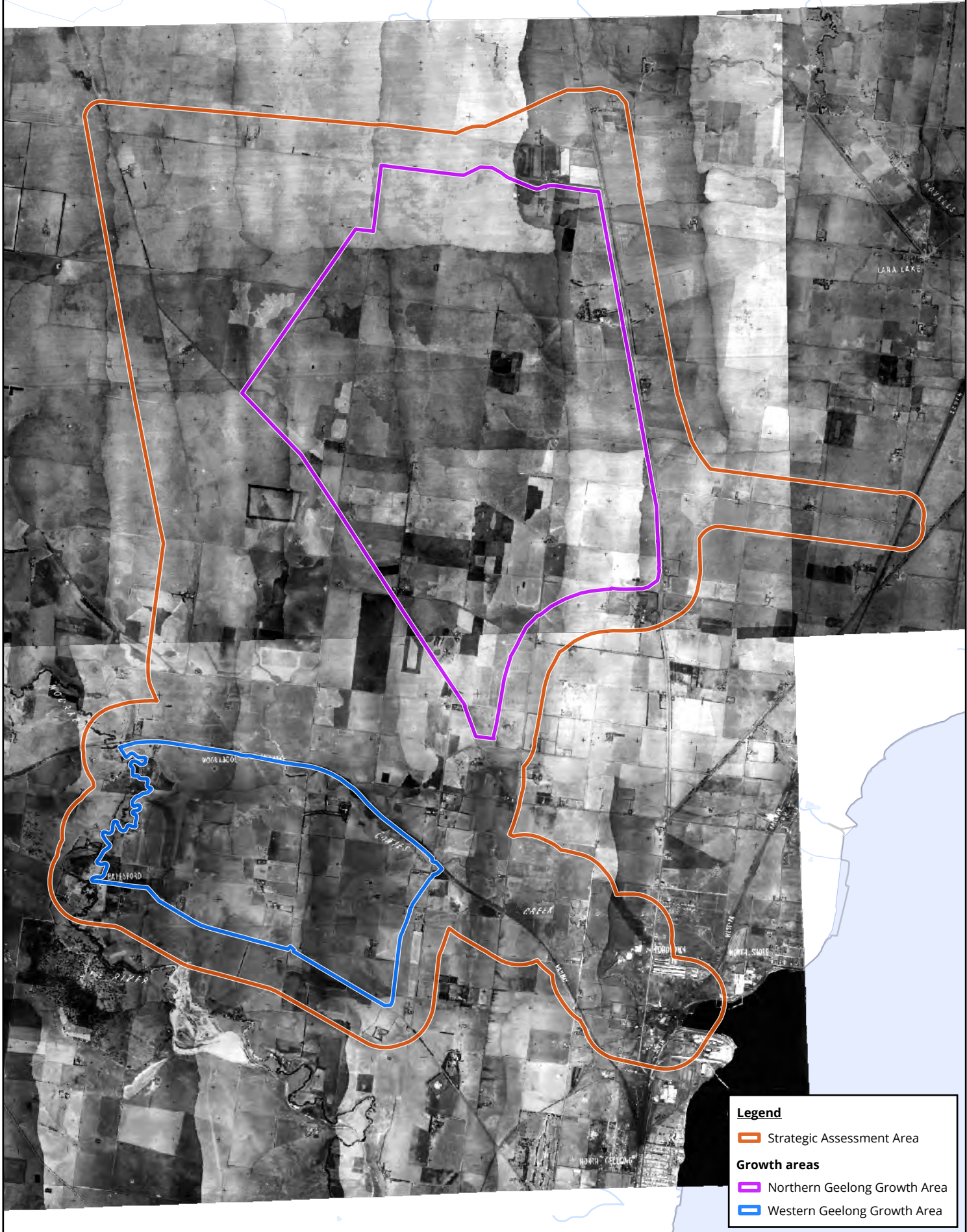
Growth areas

- ▭ Northern Geelong Growth Area
- ▭ Western Geelong Growth Area

Bioregions - Victoria

- ▭ Central Victorian Uplands
- ▭ Gippsland Plain
- ▭ Otway Plain
- ▭ Otway Ranges
- ▭ Victorian Volcanic Plain

3-4 - Historic land use within the Strategic Assessment Area

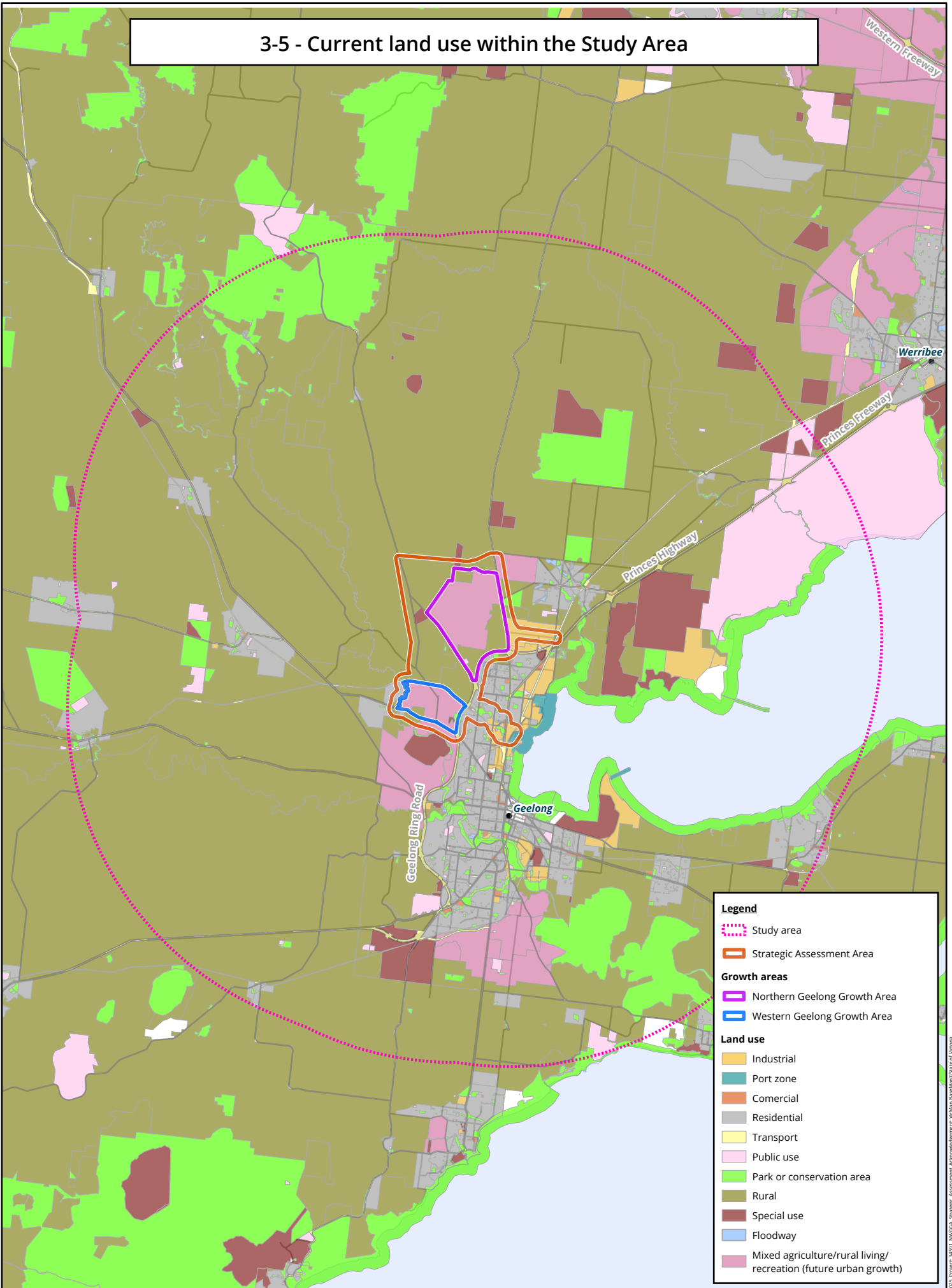


Legend

- Strategic Assessment Area
- Growth areas**
- Northern Geelong Growth Area
- Western Geelong Growth Area

Water: 30/91 - Date: 18 March 2025, Project: 24571 - Strategic Assessment, Acknowledgment: VicMap Data/MapState of Victoria

3-5 - Current land use within the Study Area



Legend

- ⋯ Study area
- Strategic Assessment Area

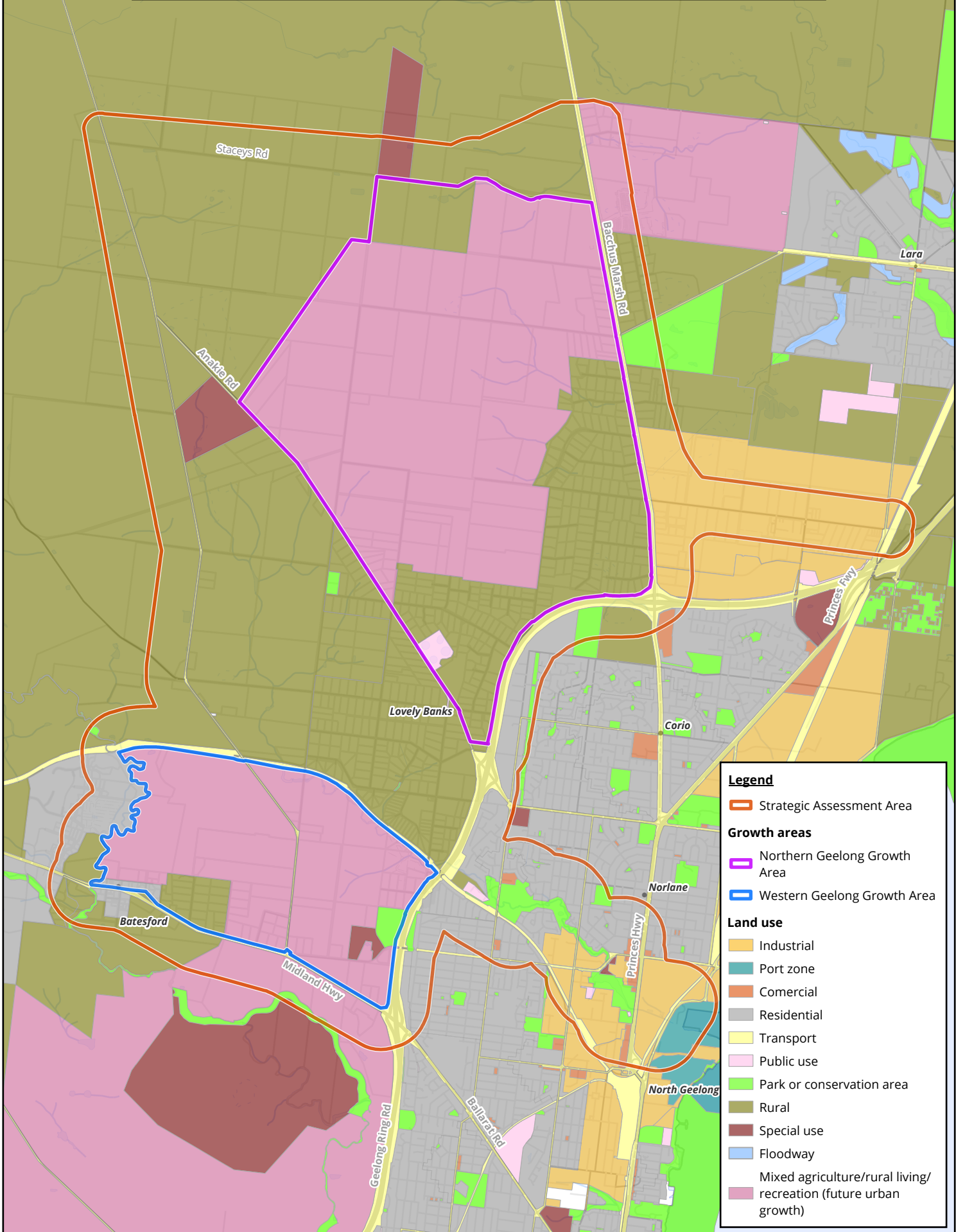
Growth areas

- Northern Geelong Growth Area
- Western Geelong Growth Area

Land use

- Industrial
- Port zone
- Commercial
- Residential
- Transport
- Public use
- Park or conservation area
- Rural
- Special use
- Floodway
- Mixed agriculture/rural living/recreation (future urban growth)

3-6 - Current land use within the Strategic Assessment Area



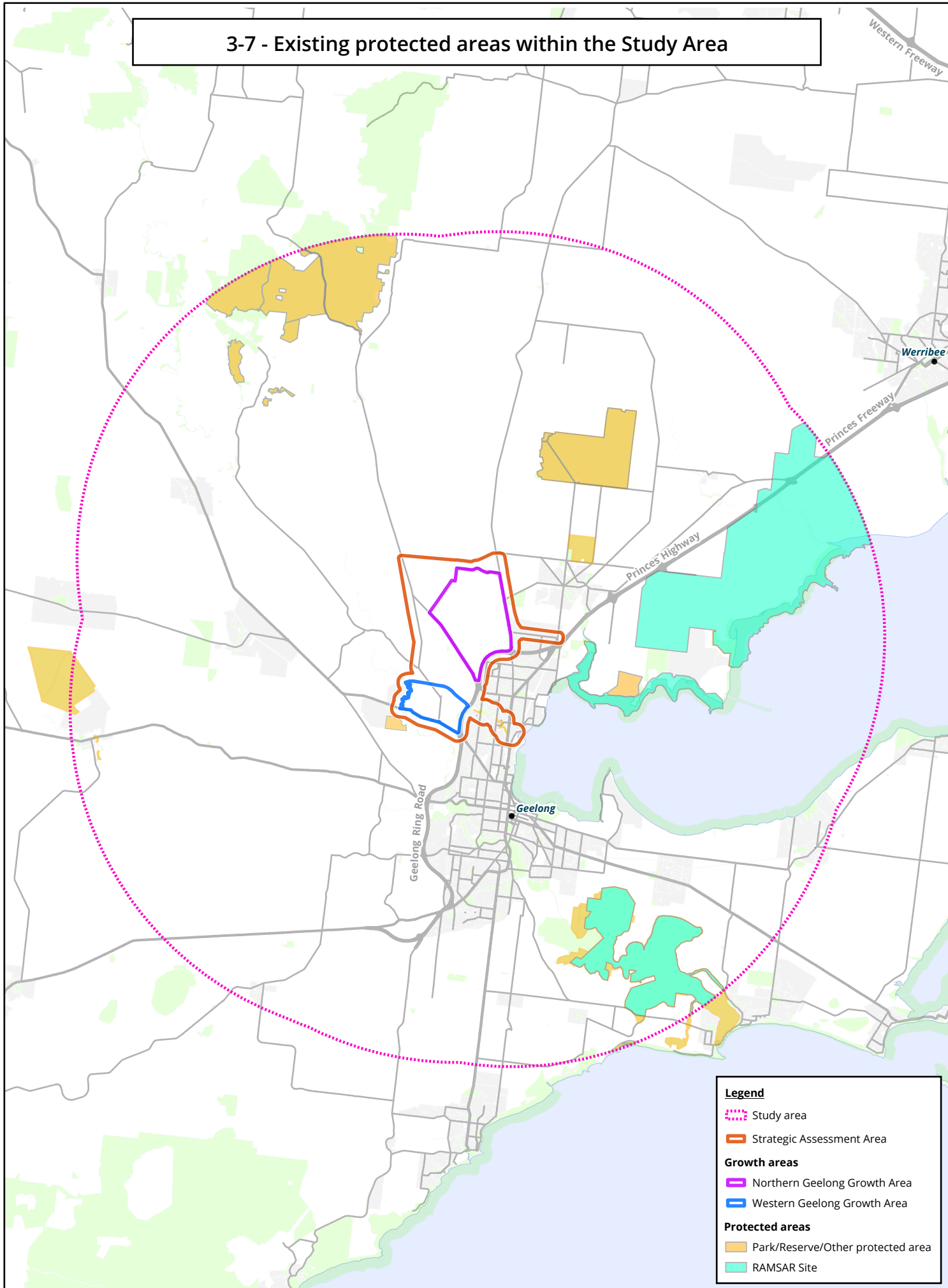
Legend

- Strategic Assessment Area
- Northern Geelong Growth Area
- Western Geelong Growth Area

Land use

- Industrial
- Port zone
- Commercial
- Residential
- Transport
- Public use
- Park or conservation area
- Rural
- Special use
- Floodway
- Mixed agriculture/rural living/recreation (future urban growth)

3-7 - Existing protected areas within the Study Area



Legend

- ⋯ Study area
- Strategic Assessment Area

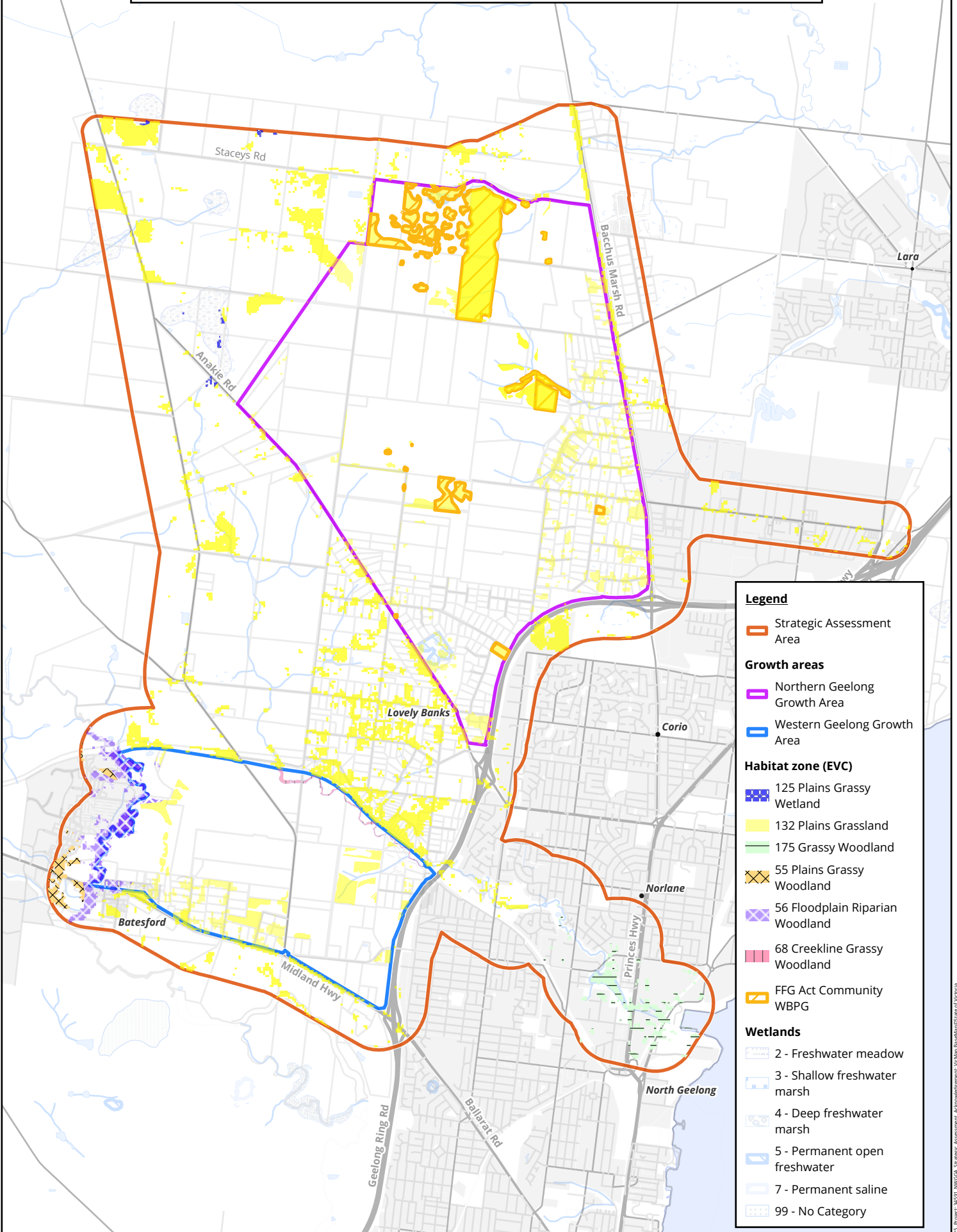
Growth areas

- Northern Geelong Growth Area
- Western Geelong Growth Area

Protected areas

- Park/Reserve/Other protected area
- RAMSAR Site

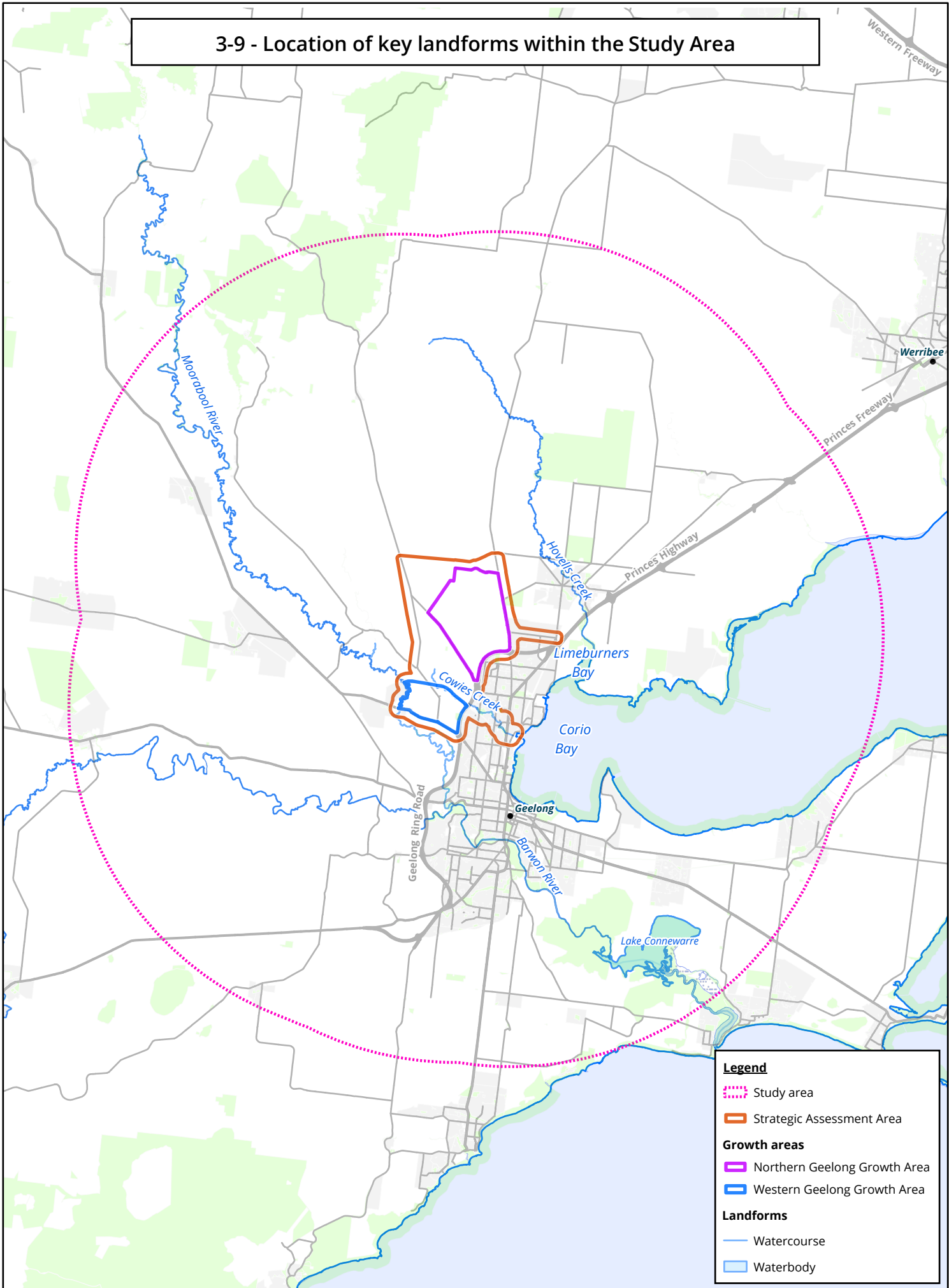
3-8 - Vegetation within Strategic Assessment Area



Legend

- Strategic Assessment Area
- Growth areas**
- Northern Geelong Growth Area
- Western Geelong Growth Area
- Habitat zone (EVC)**
- 125 Plains Grassy Wetland
- 132 Plains Grassland
- 175 Grassy Woodland
- 55 Plains Grassy Woodland
- 56 Floodplain Riparian Woodland
- 68 Creekline Grassy Woodland
- FFG Act Community WBPB
- Wetlands**
- 2 - Freshwater meadow
- 3 - Shallow freshwater marsh
- 4 - Deep freshwater marsh
- 5 - Permanent open freshwater
- 7 - Permanent saline
- 99 - No Category

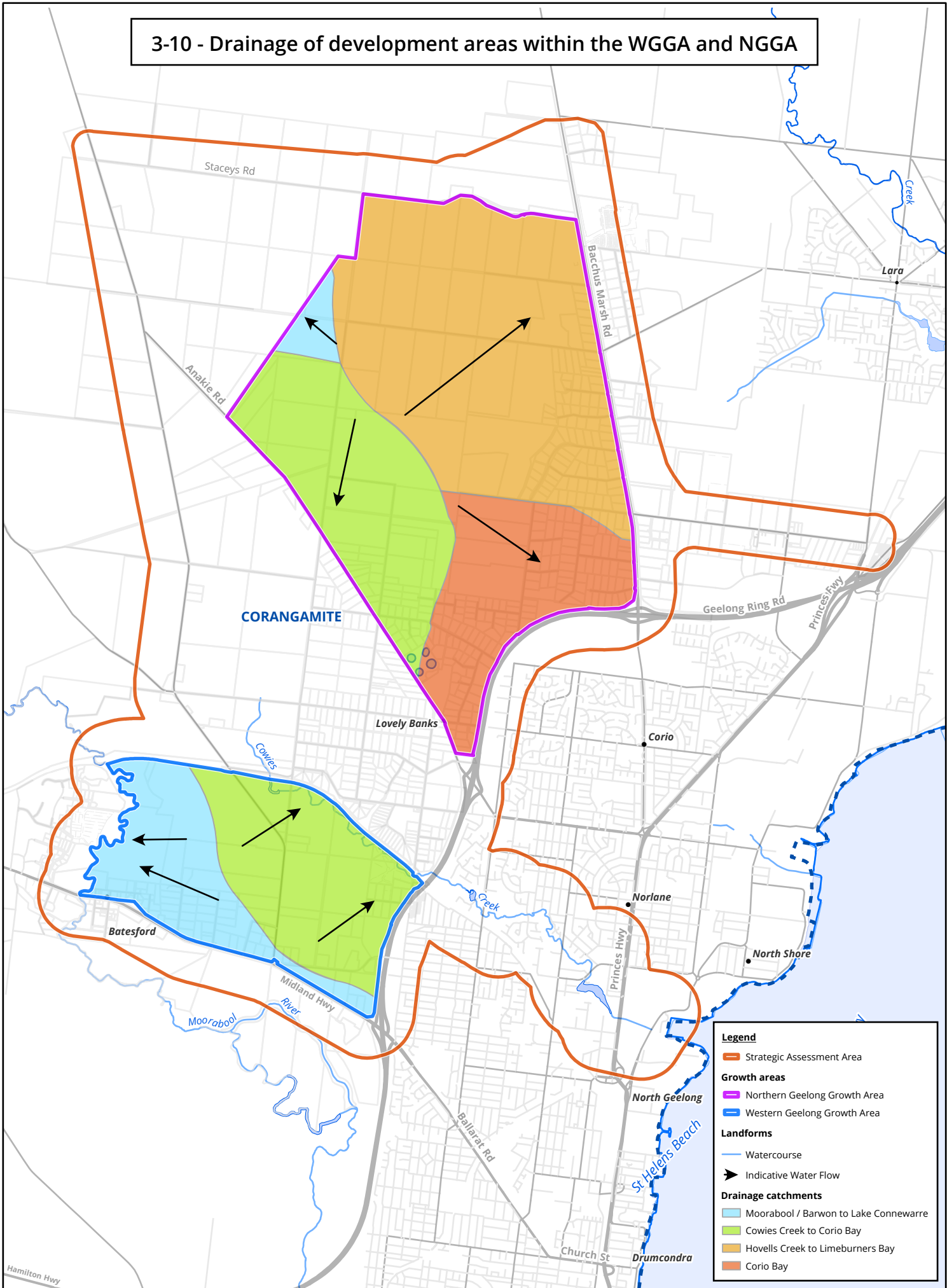
3-9 - Location of key landforms within the Study Area



Legend

- ⋯ Study area
- Strategic Assessment Area
- Growth areas**
- Northern Geelong Growth Area
- Western Geelong Growth Area
- Landforms**
- Watercourse
- Waterbody

3-10 - Drainage of development areas within the WGGA and NGGA



Legend

- Strategic Assessment Area
- Growth areas**
 - Northern Geelong Growth Area
 - Western Geelong Growth Area
- Landforms**
 - Watercourse
 - Indicative Water Flow
- Drainage catchments**
 - Moorabool / Barwon to Lake Connewarre
 - Cowies Creek to Corio Bay
 - Hovells Creek to Limeburners Bay
 - Corio Bay

Writer: 30/01/2021, Date: 18 March 2025, Project: 24571_WGGA Strategic Assessment, Acknowledgement: VicMap, Data@VicMapState of Victoria