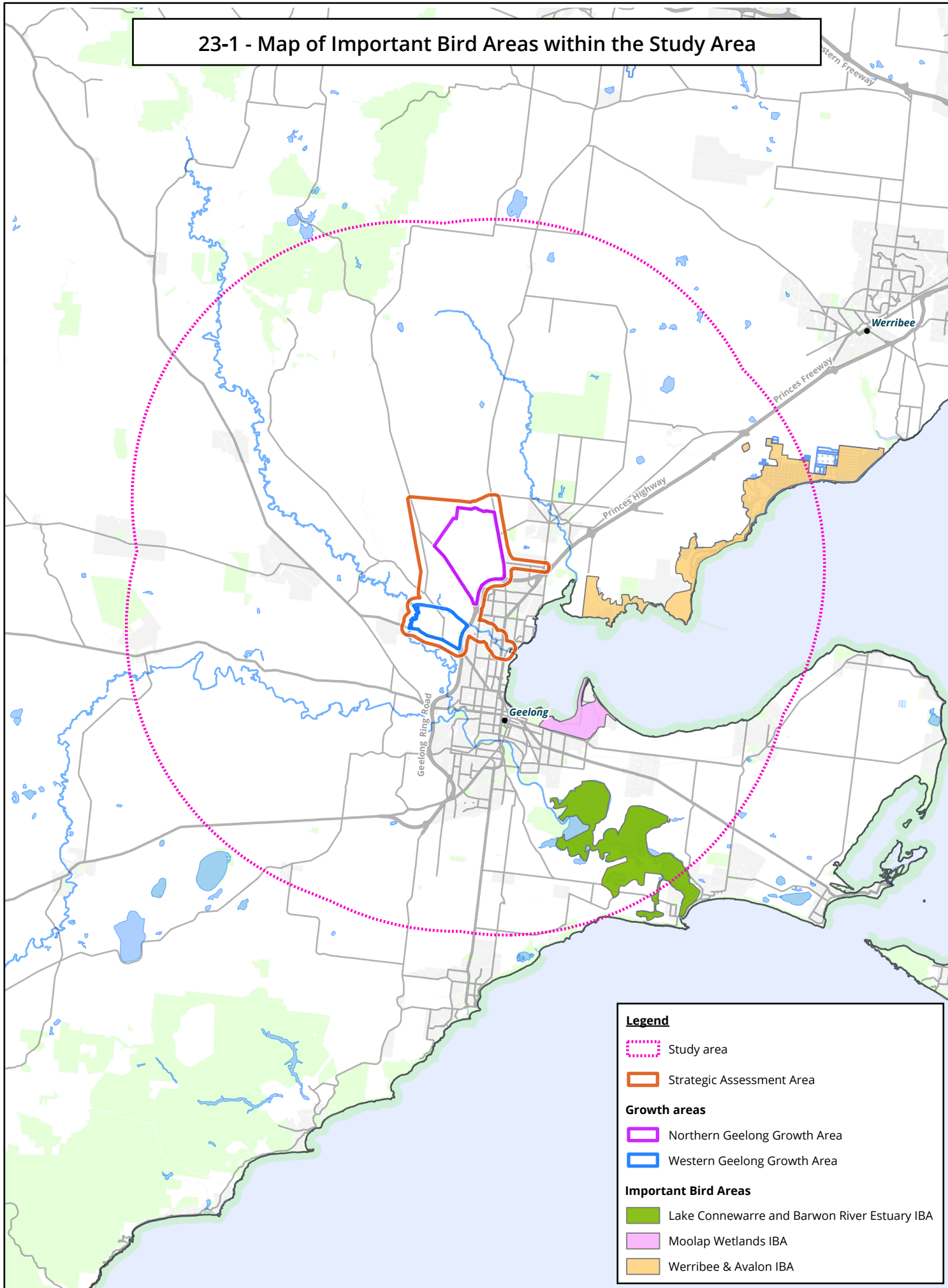


23-1 - Map of Important Bird Areas within the Study Area



Legend

- Study area
- Strategic Assessment Area

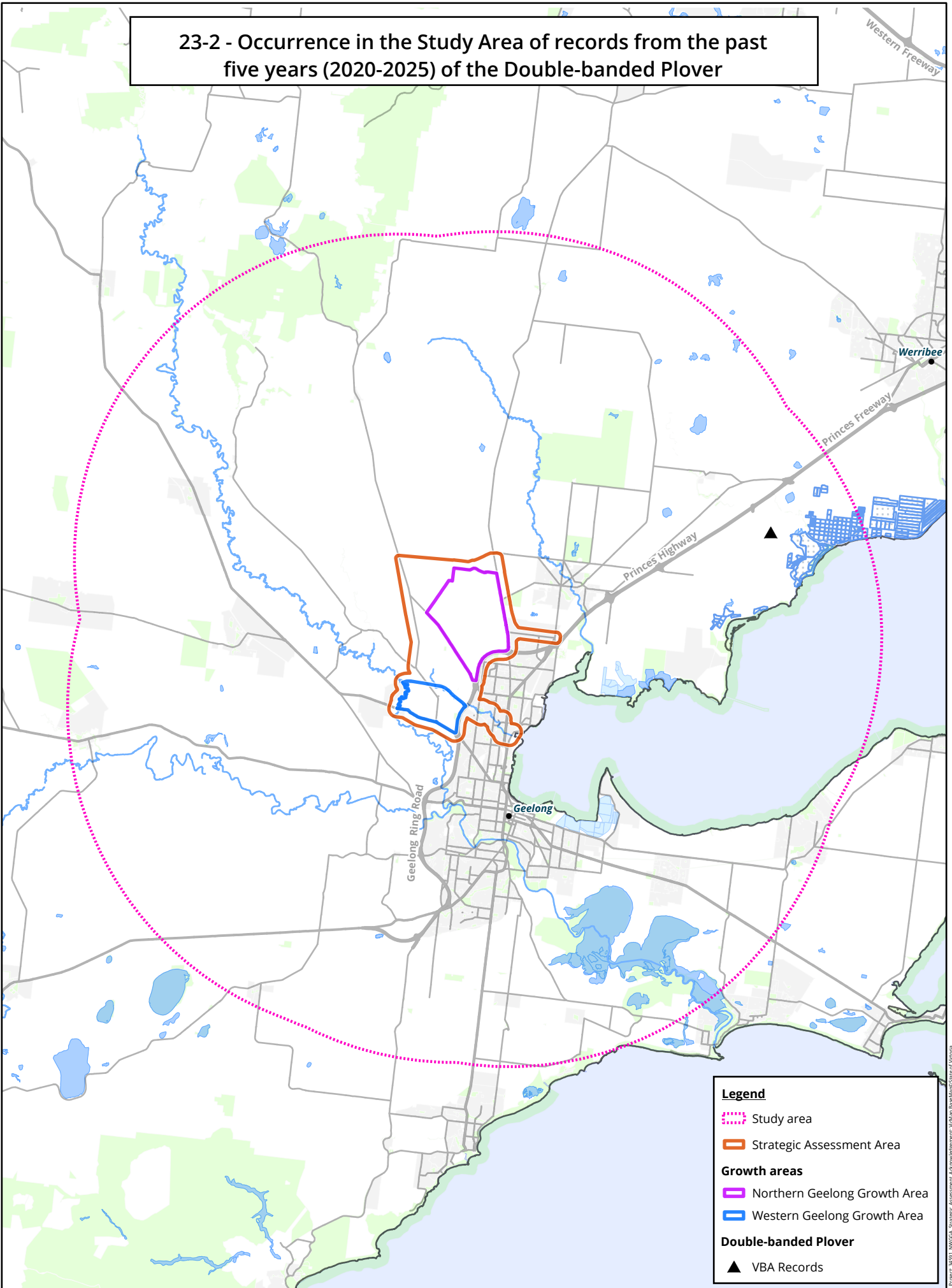
Growth areas

- Northern Geelong Growth Area
- Western Geelong Growth Area

Important Bird Areas

- Lake Connewarre and Barwon River Estuary IBA
- Moolap Wetlands IBA
- Werribee & Avalon IBA

23-2 - Occurrence in the Study Area of records from the past five years (2020-2025) of the Double-banded Plover



Legend

- ⋯ Study area
- Strategic Assessment Area

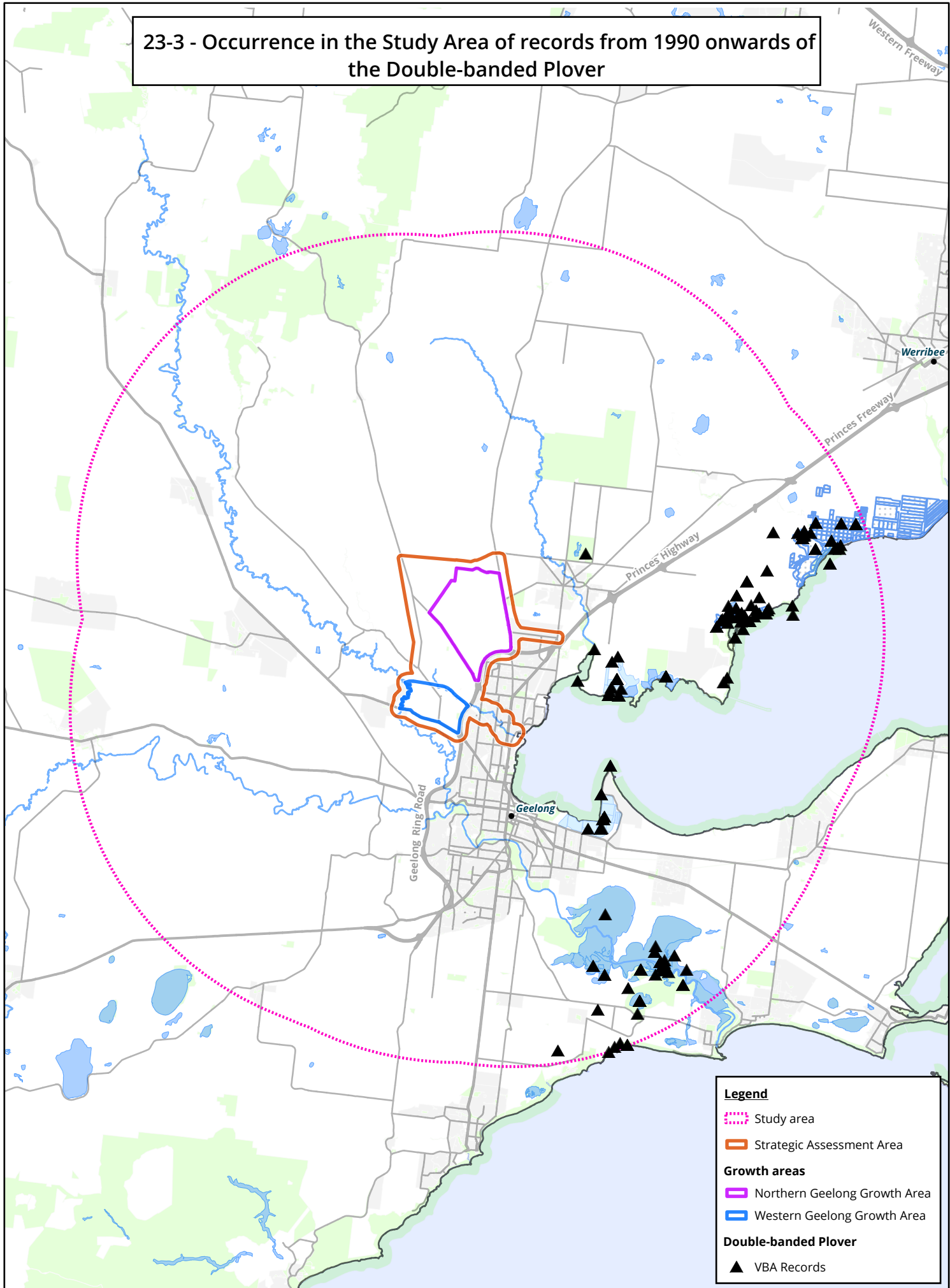
Growth areas

- Northern Geelong Growth Area
- Western Geelong Growth Area

Double-banded Plover

- ▲ VBA Records

23-3 - Occurrence in the Study Area of records from 1990 onwards of the Double-banded Plover



Legend

- ⋯ Study area
- Strategic Assessment Area

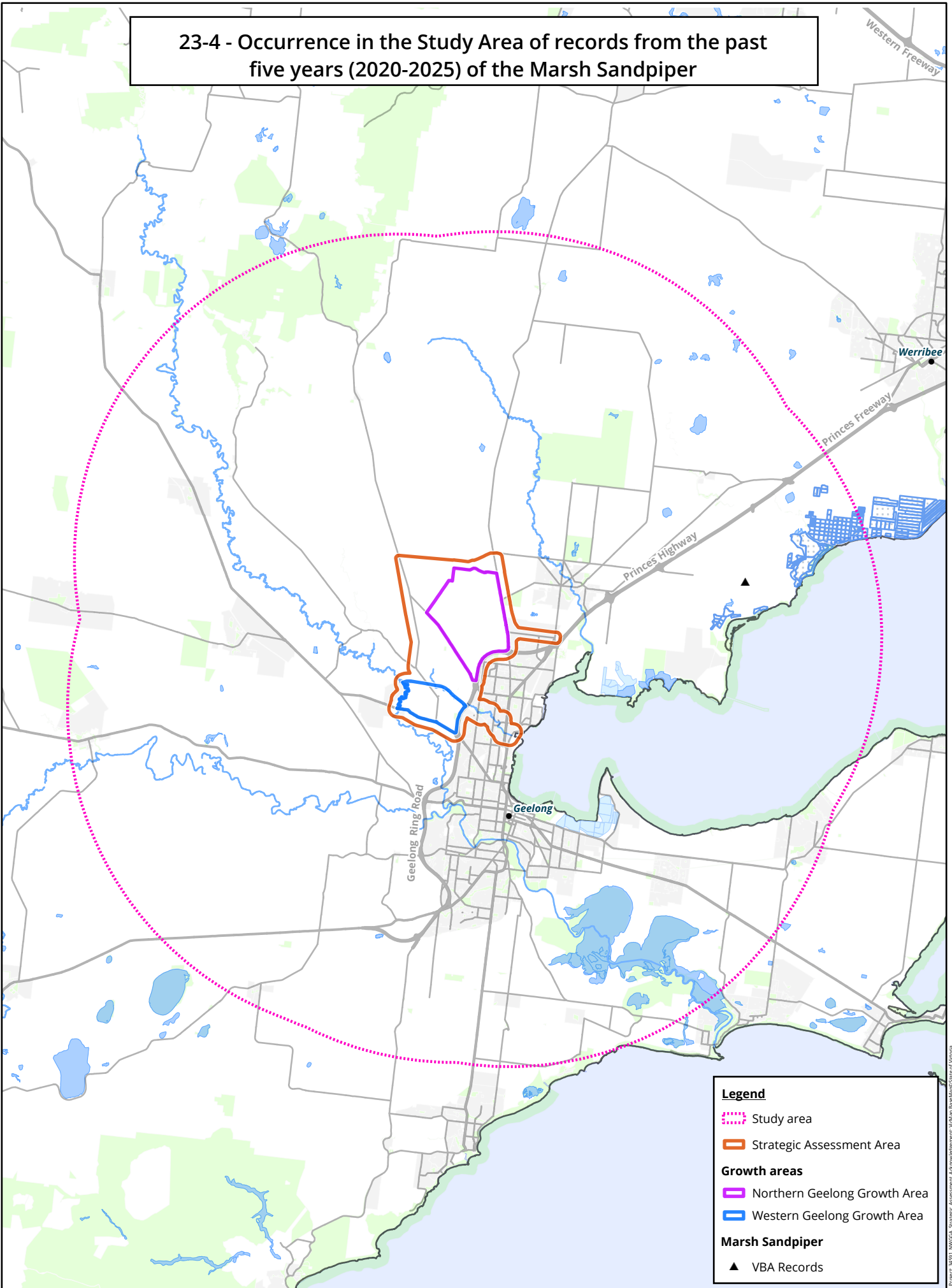
Growth areas

- Northern Geelong Growth Area
- Western Geelong Growth Area

Double-banded Plover

- ▲ VBA Records

23-4 - Occurrence in the Study Area of records from the past five years (2020-2025) of the Marsh Sandpiper



Legend

- ⋯ Study area
- Strategic Assessment Area

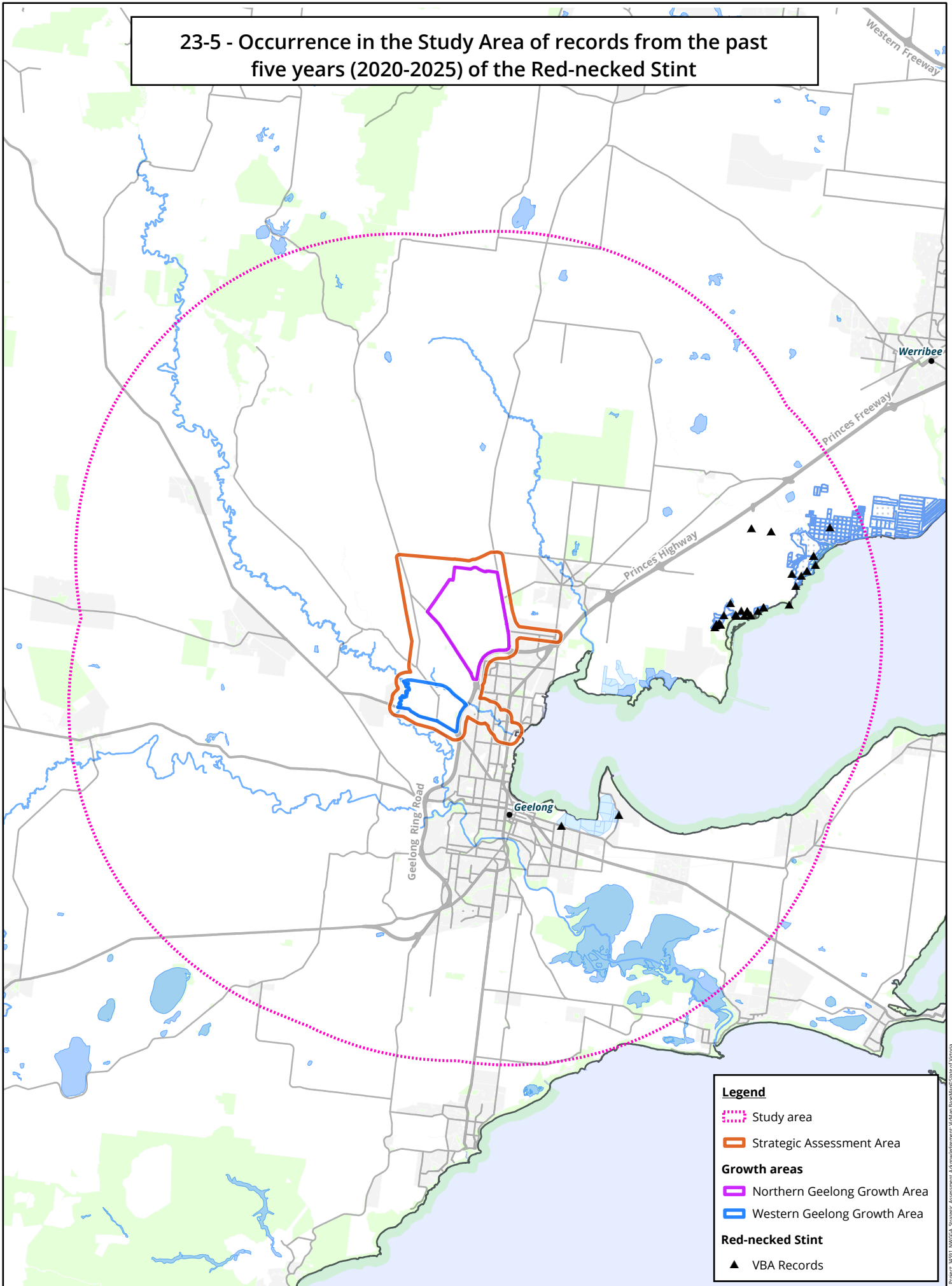
Growth areas

- Northern Geelong Growth Area
- Western Geelong Growth Area

Marsh Sandpiper

- ▲ VBA Records

23-5 - Occurrence in the Study Area of records from the past five years (2020-2025) of the Red-necked Stint



Legend

- ⋯ Study area
- Strategic Assessment Area

Growth areas

- Northern Geelong Growth Area
- Western Geelong Growth Area

Red-necked Stint

- ▲ VBA Records