

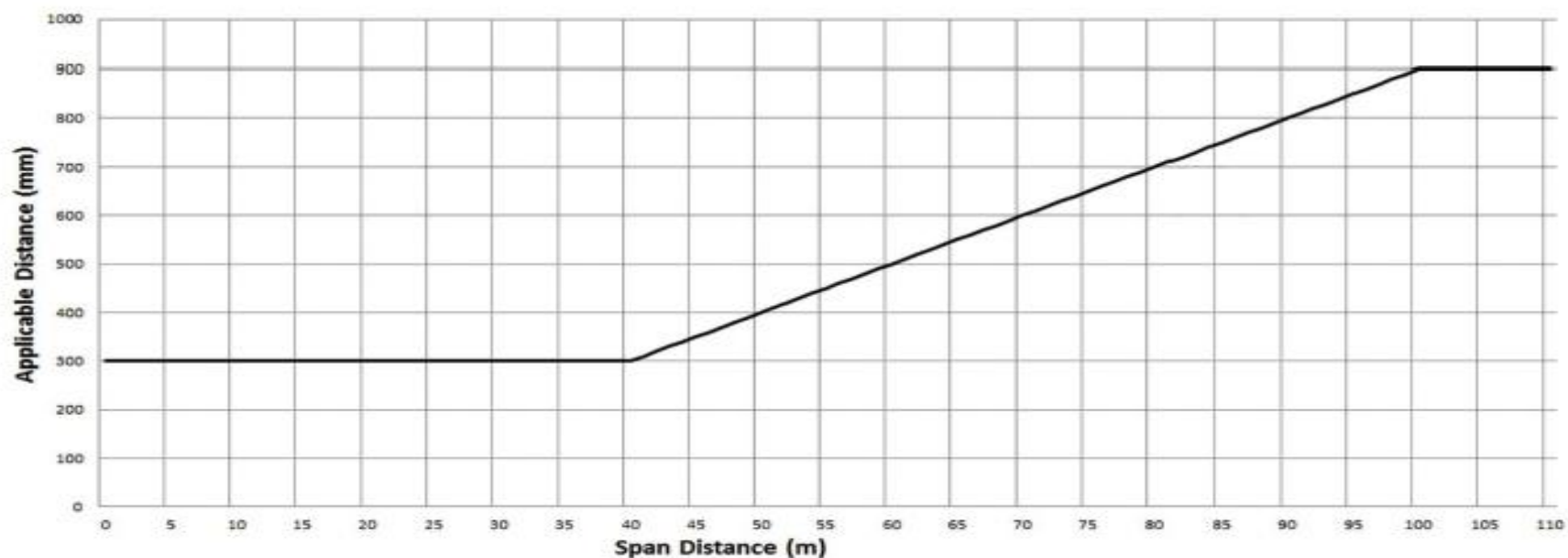
ELECTRIC LINE CLEARANCE MANAGEMENT PLAN

**CITY SERVICES
PARKS AND GARDENS
TREE MANAGEMENT UNIT**

VERSION 1.0

Appendix 3 – Graphs depicting the minimum clearance space (up to 100m in LBRA and up to 45m in HBRA) required to be always maintained – please note regrowth allowance is required when determining pruning distance during the cutting cycle.

** Spans over 100m in LBRA and 45m in HBRA (length) will have greater clearance requirements, information is stored in Weave or can be provided by Powercor*

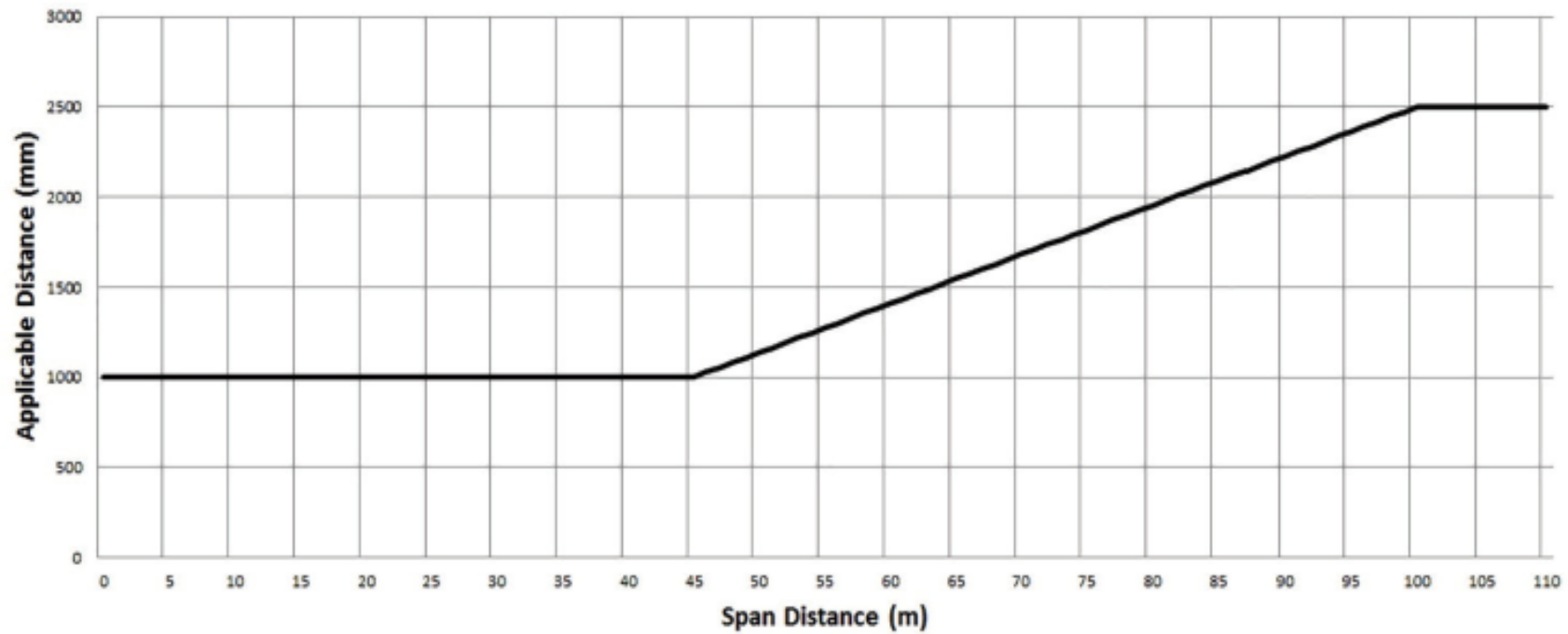


Graph 1:

Insulated electric lines in all Areas.

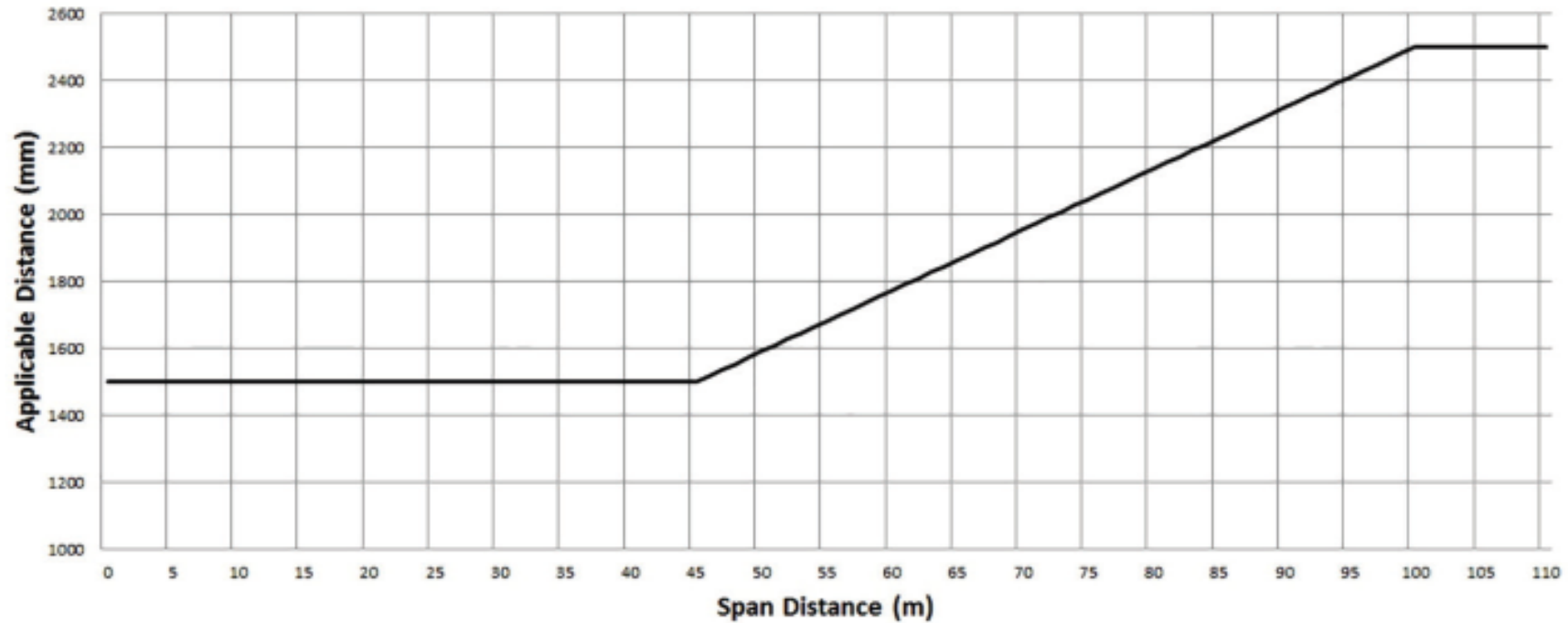
Graph 2: Uninsulated low voltage electric line in low bushfire risk area.

** Spans over 100m in LBRA and 45m in HBRA (length) will have greater clearance requirements, information is stored in Weave or can be provided by Powercor*



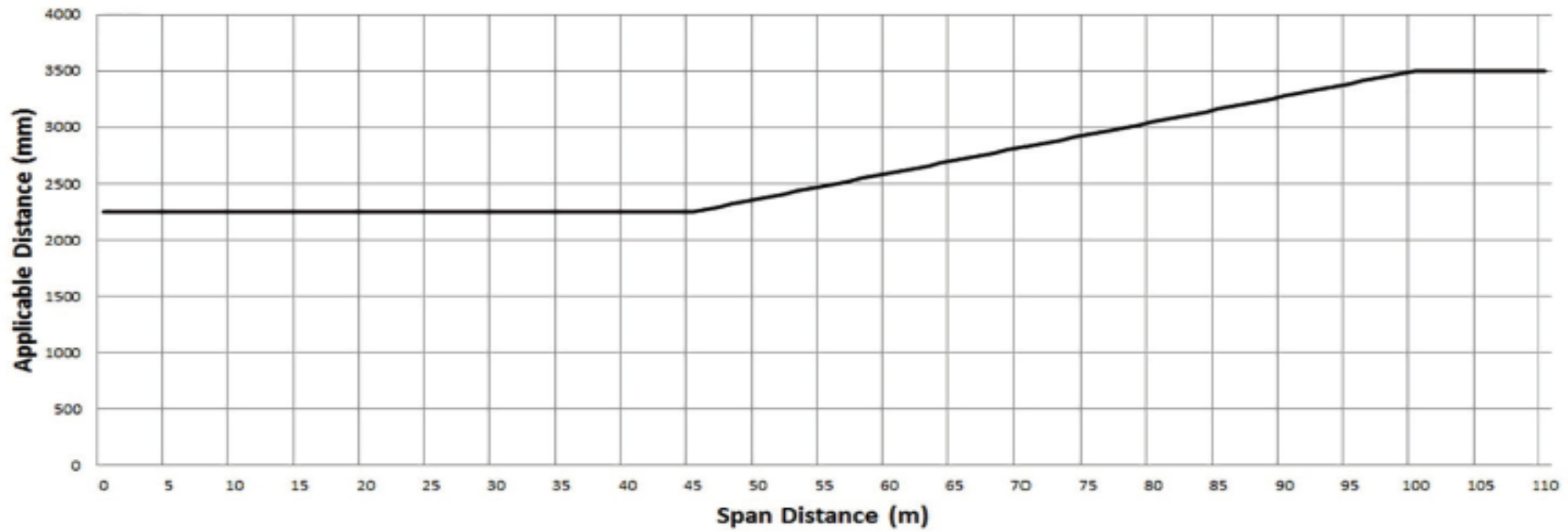
Graph 3: Uninsulated high volt age electric line (other than 66 00-volt electric line) in low bushfire risk area.

** Spans over 100m in LBRA and 45m in HBRA (length) will have greater clearance requirements, information is stored in Weave or can be provided by Powercor*



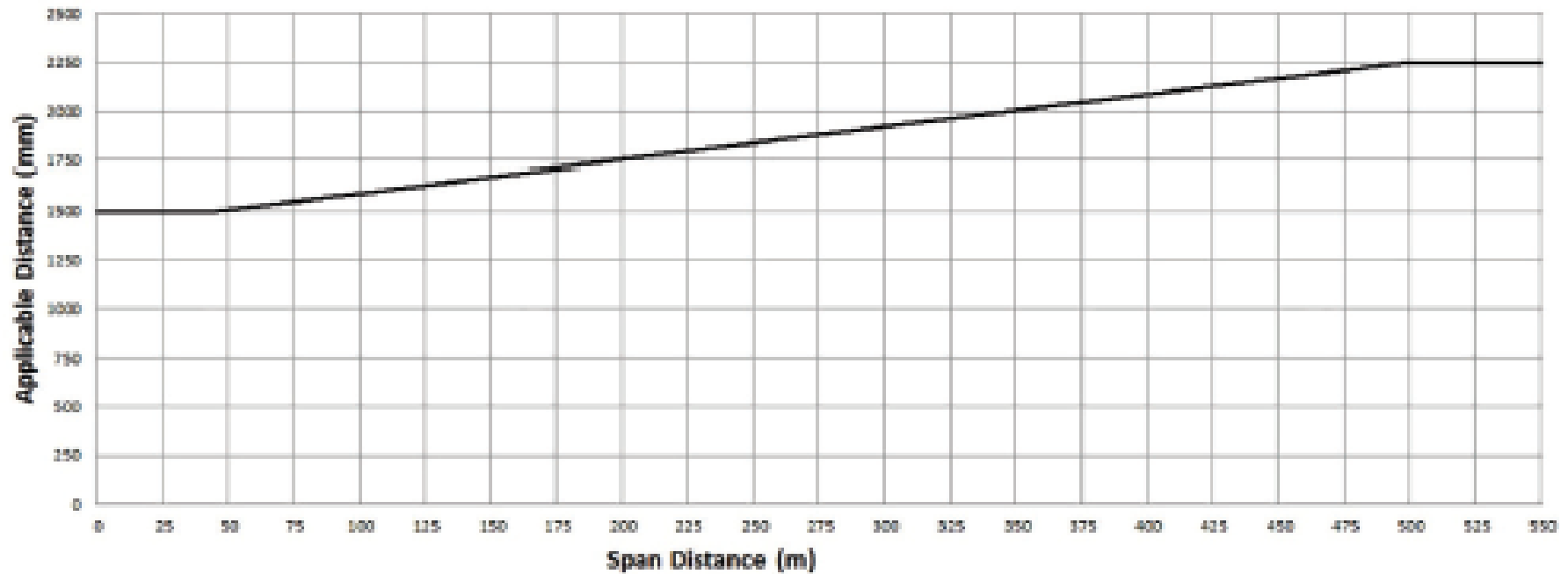
Graph 4: Uninsulated 66 00-volts electric line in low bushfire risk area.

** Spans over 100m in LBRA and 45m in HBRA (length) will have greater clearance requirements, information is stored in Weave or can be provided by Powercor*



Graph 5: Uninsulated low voltage and high voltage electric line (other than 66 000-volt electric line) in hazardous bushfire risk area.

** Spans over 100m in LBRA and 45m in HBRA (length) will have greater clearance requirements, information is stored in Weave or can be provided by Powercor*



Graph 6: Uninsulated 66 000-volt electric line in hazardous bushfire risk area.

** Spans over 100m in LBRA and 45m in HBRA (length) will have greater clearance requirements, information is stored in Weave or can be provided by Powercor*

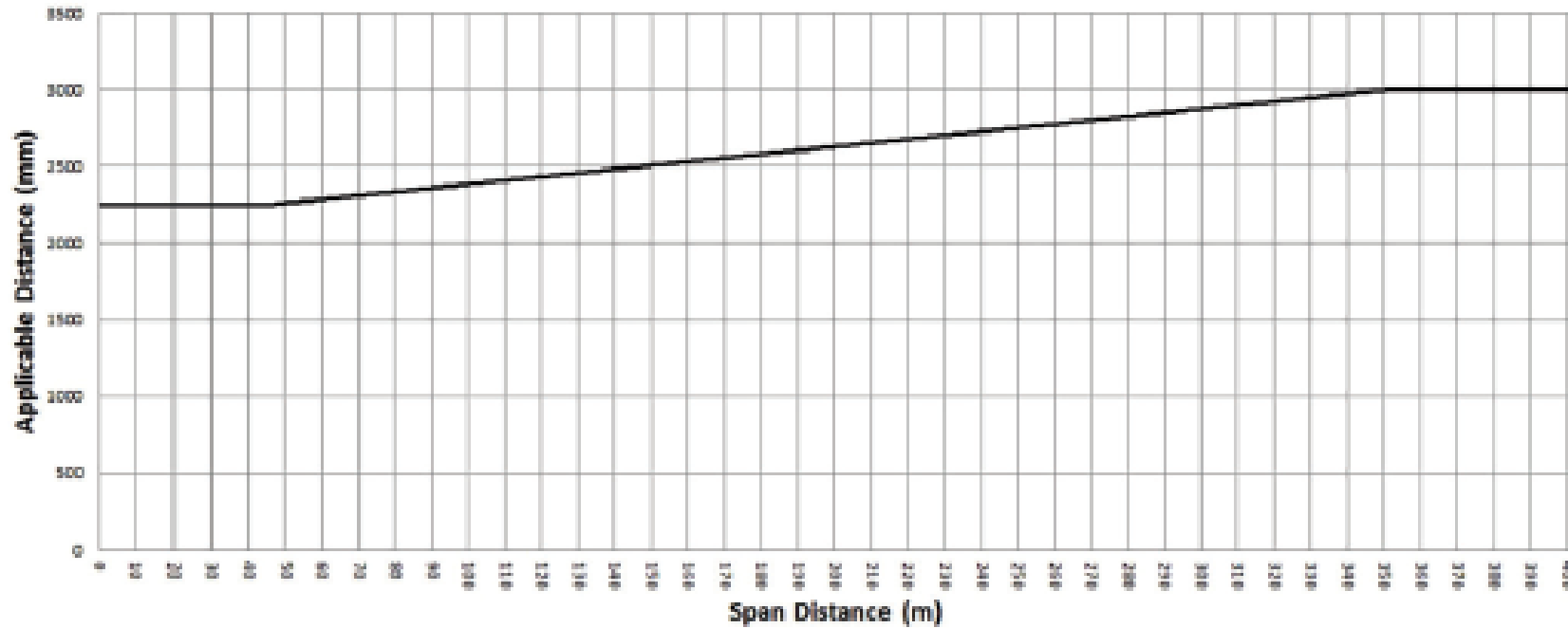


Figure 1: Plan view of electric lines in all areas.

Clauses 24, 25, 26, 27, 28 and 29,
Graphs 1, 2, 3, 4, 5 and 6

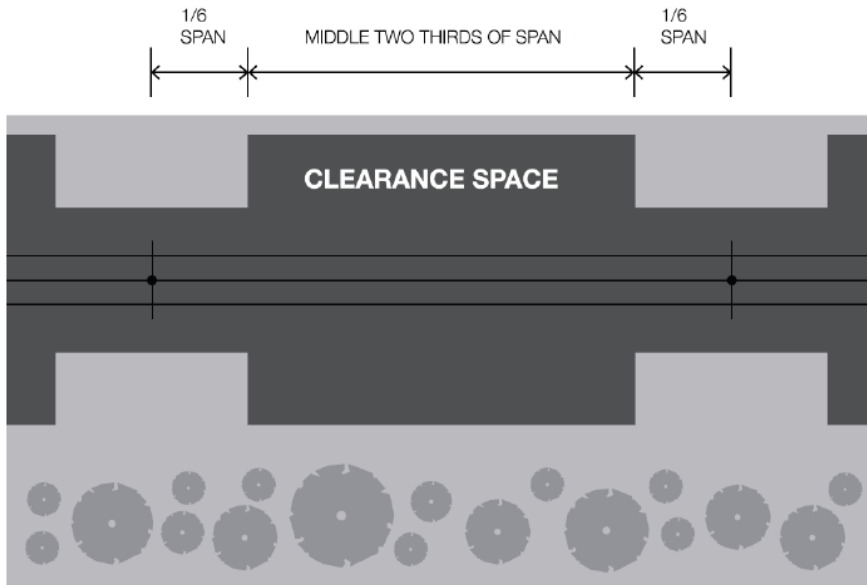


Figure 2: Insulated electric lines in all areas.

Clause 24, Graph 1

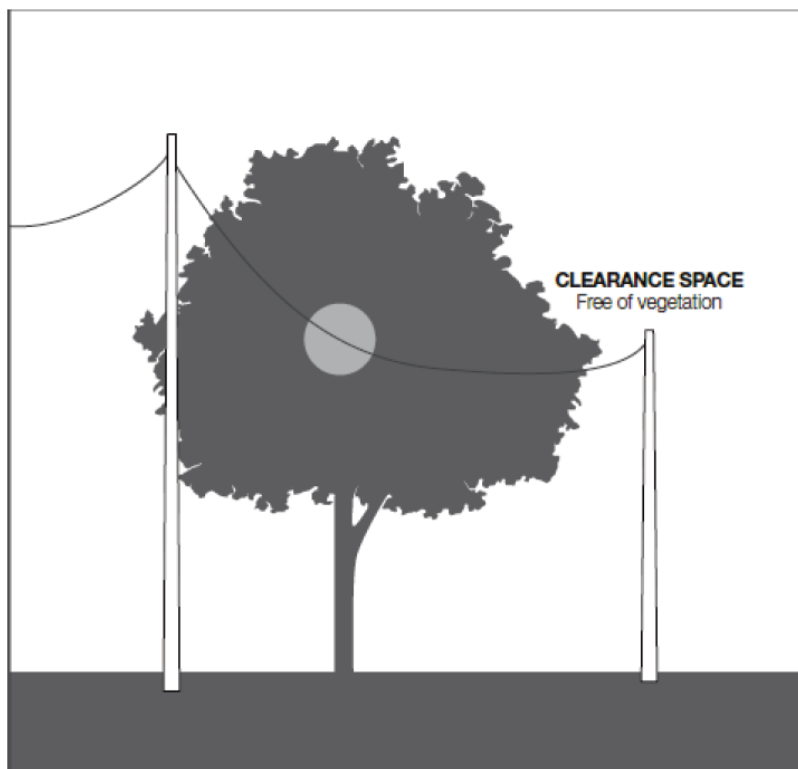


Figure 3: Insulated electric lines in all areas and uninsulated high voltage electric lines (other than 66 000-volt electric lines) in low bushfire risk area.

Clauses 24 and 26, Graphs 1 and 3

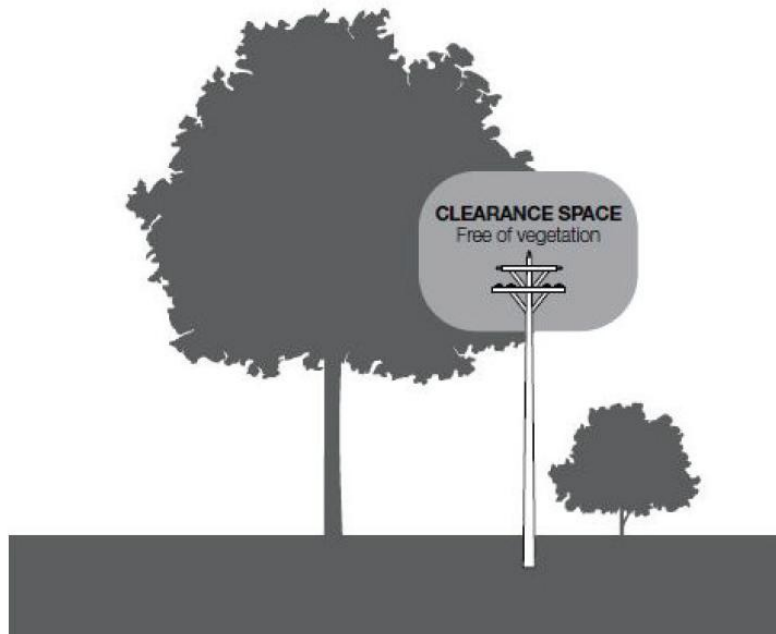


Figure 4: Uninsulated low voltage electric line in a low bushfire risk area.

Clause 25, Graph 2

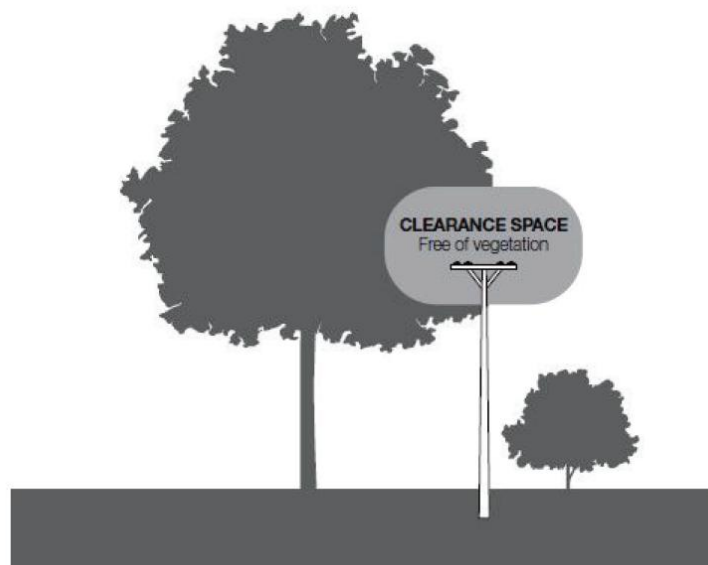


Figure 5: Uninsulated 66 000-volt electric line in a low bushfire risk area and uninsulated electric line in a hazardous bushfire risk area.

Clauses 27, 28 and 29, Graphs 4, 5 and 6

